

# 7918

BY PACIFIC & ORIENT PROPERTIES, LLC

## LEVEL 7

### RESIDENCE 701 UNIT A

3 Bedrooms

3.5 Bathrooms

**Interior Area:**

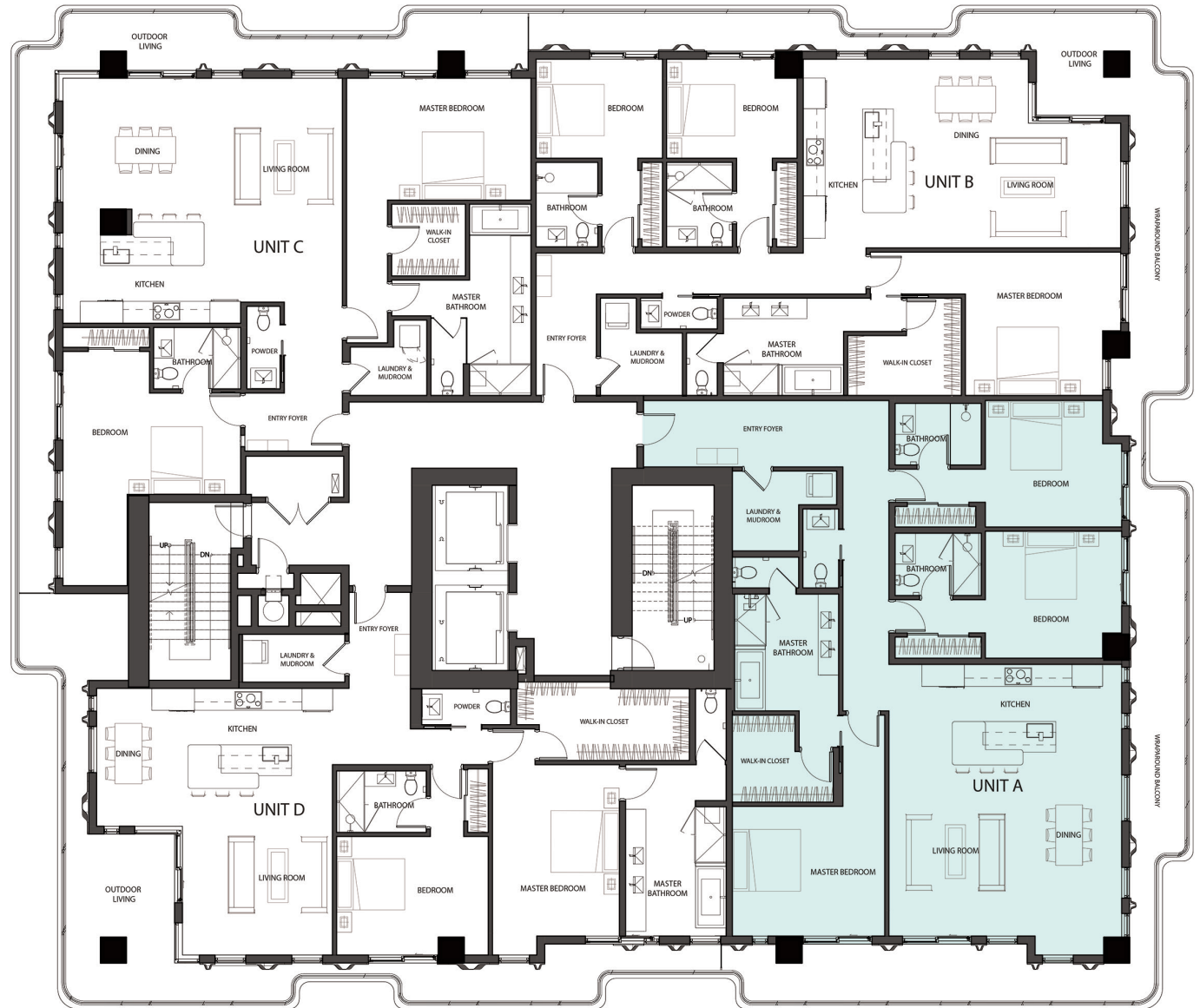
2136 Sq. Ft.

**Terrace/Balcony Area:**

525 Sq. Ft.

**Total Area:**

2661 Sq. Ft.



# 7918

BY PACIFIC & ORIENT PROPERTIES, LLC

## LEVEL 7

### RESIDENCE 702 UNIT B

3 Bedrooms

3.5 Bathrooms

Interior Area:

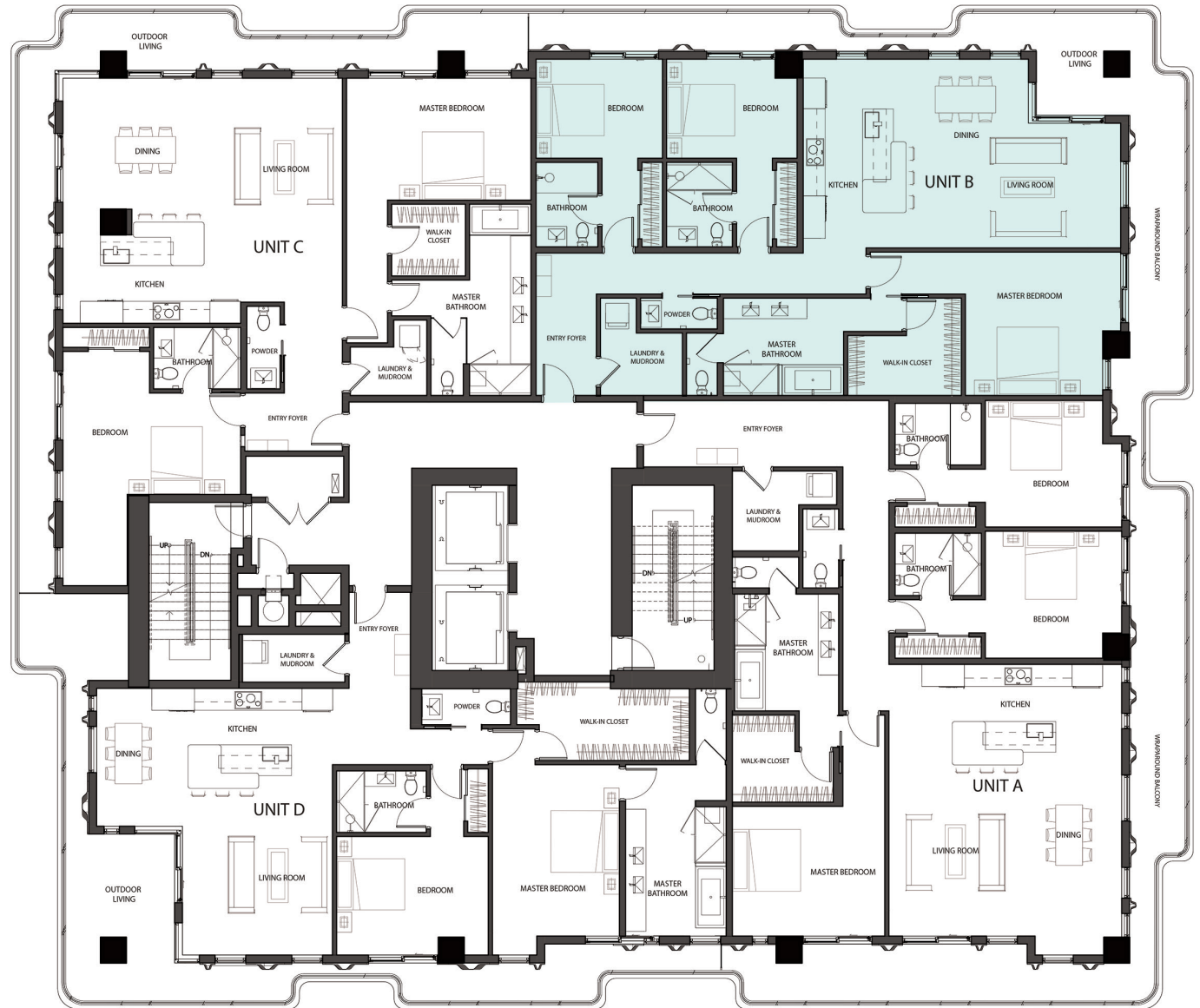
1912 Sq. Ft.

Terrace/Balcony Area:

526 Sq. Ft.

Total Area:

2438 Sq. Ft.



# 7918

BY PACIFIC & ORIENT PROPERTIES, LLC

**LEVEL 7**

## RESIDENCE 703 UNIT C

2 Bedrooms

2.5 Bathrooms

**Interior Area:**

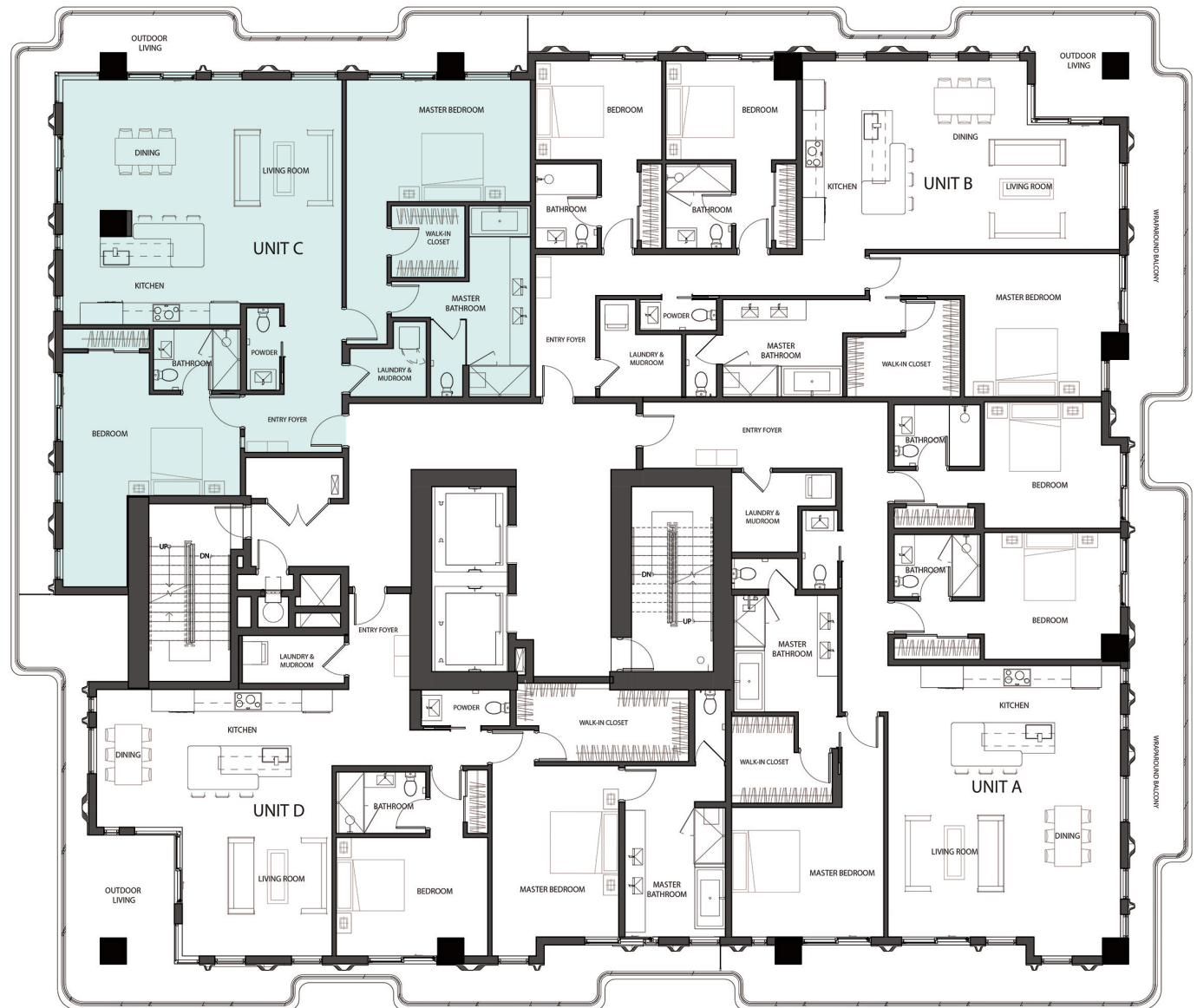
1807 Sq. Ft.

**Terrace/Balcony Area:**

583 Sq. Ft.

**Total Area:**

2390 Sq. Ft.



# 7918

BY PACIFIC & ORIENT PROPERTIES, LLC

## LEVEL 7

### RESIDENCE 704 UNIT D

2 Bedrooms

2.5 Bathrooms

Interior Area:

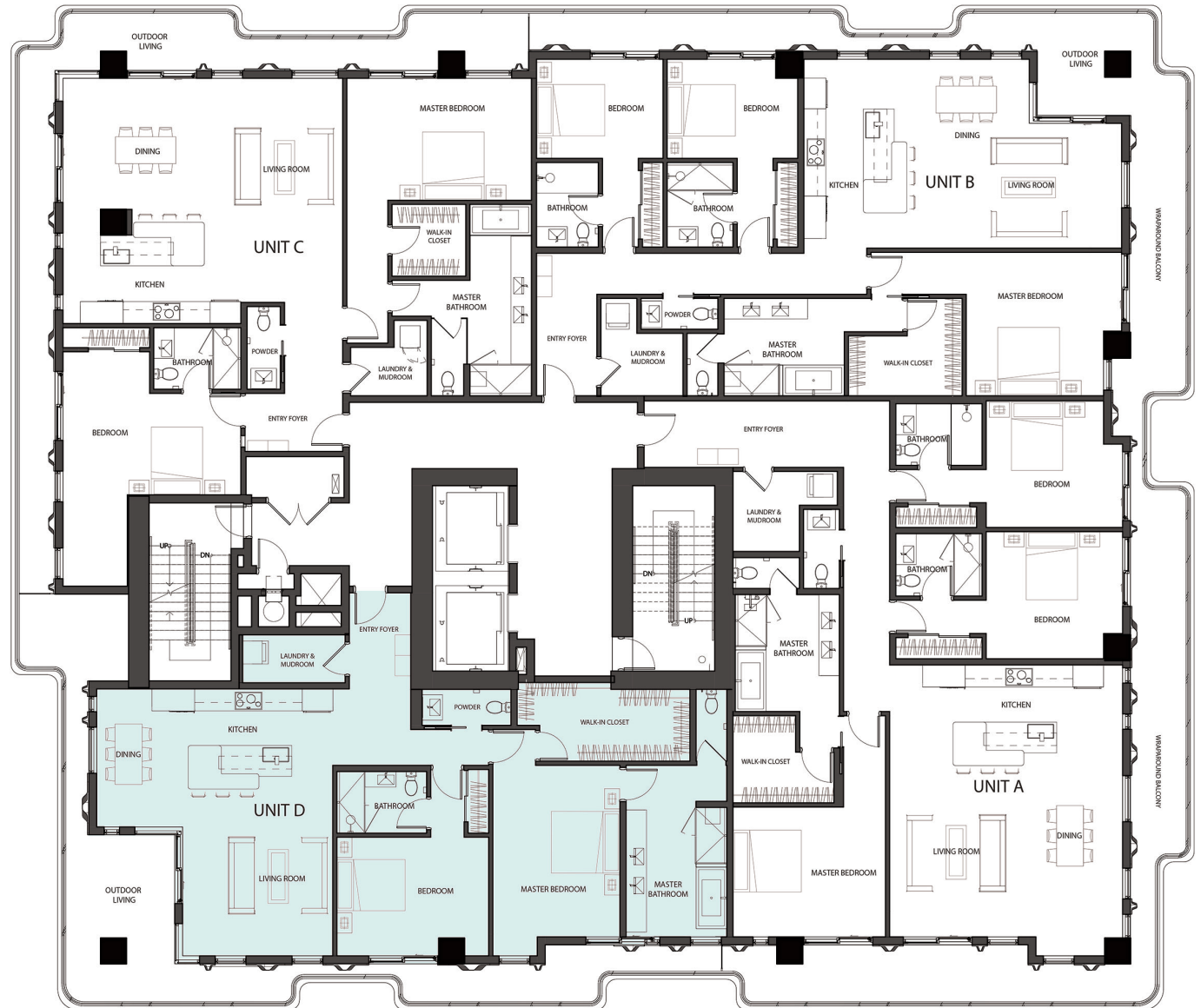
1694 Sq. Ft.

Terrace/Balcony Area:

457 Sq. Ft.

Total Area:

2151 Sq. Ft.



# 7918

BY PACIFIC & ORIENT PROPERTIES, LLC

## LEVEL 8

### RESIDENCE 801 UNIT A

3 Bedrooms

3.5 Bathrooms

**Interior Area:**

2124 Sq. Ft.

**Terrace/Balcony Area:**

580 Sq. Ft.

**Total Area:**

2704 Sq. Ft.



# 7918

BY PACIFIC & ORIENT PROPERTIES, LLC

**LEVEL 8**

## RESIDENCE 802 UNIT B

3 Bedrooms

3.5 Bathrooms

**Interior Area:**

1937 Sq. Ft.

**Terrace/Balcony Area:**

520 Sq. Ft.

**Total Area:**

2457 Sq. Ft.



# 7918

BY PACIFIC & ORIENT PROPERTIES, LLC

**LEVEL 8**

## RESIDENCE 803 UNIT C

2 Bedrooms

2.5 Bathrooms

**Interior Area:**

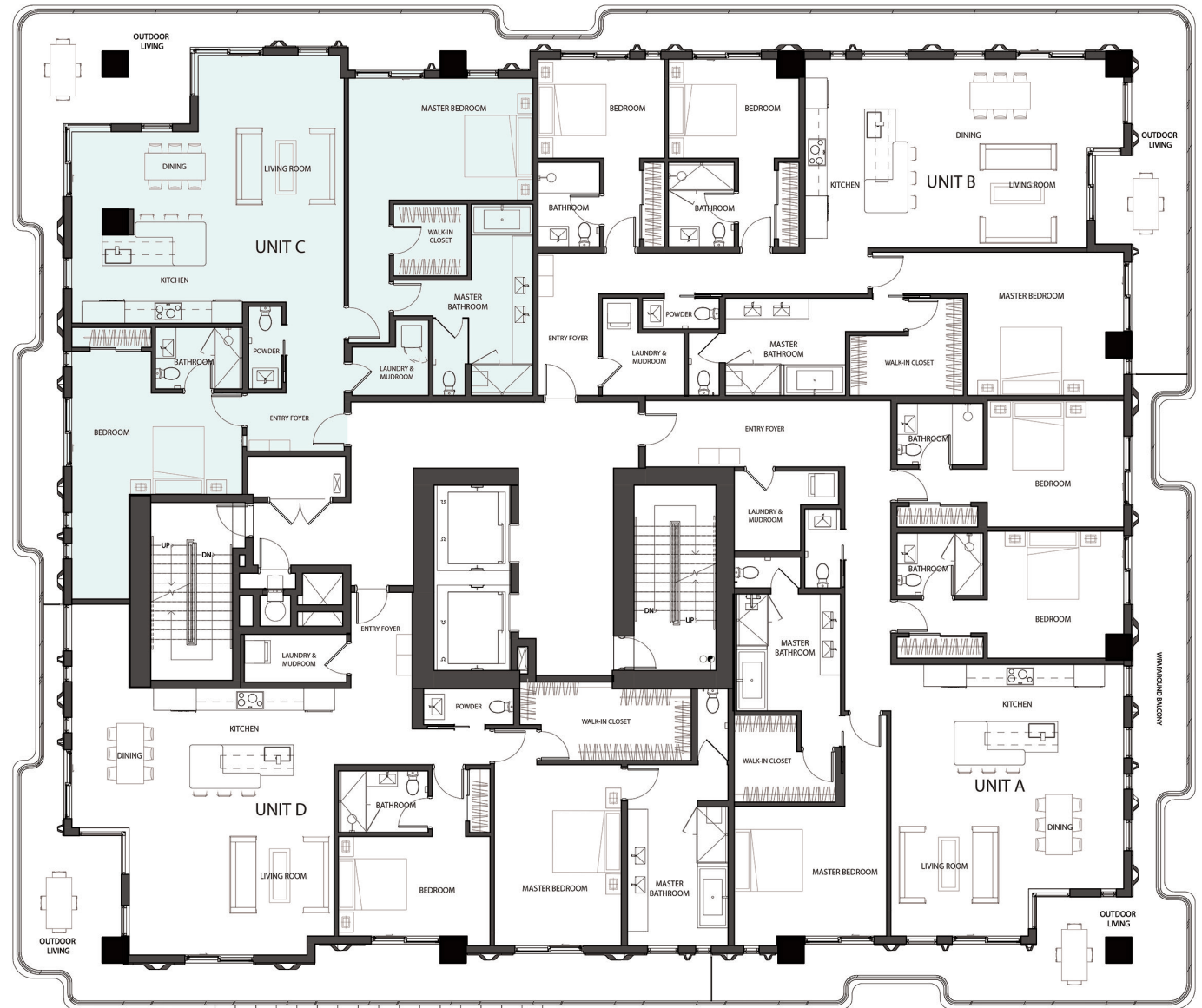
1748 Sq. Ft.

**Terrace/Balcony Area:**

570 Sq. Ft.

**Total Area:**

2318 Sq. Ft.



# 7918

BY PACIFIC & ORIENT PROPERTIES, LLC

## LEVEL 8

### RESIDENCE 804 UNIT D

2 Bedrooms

2.5 Bathrooms

**Interior Area:**

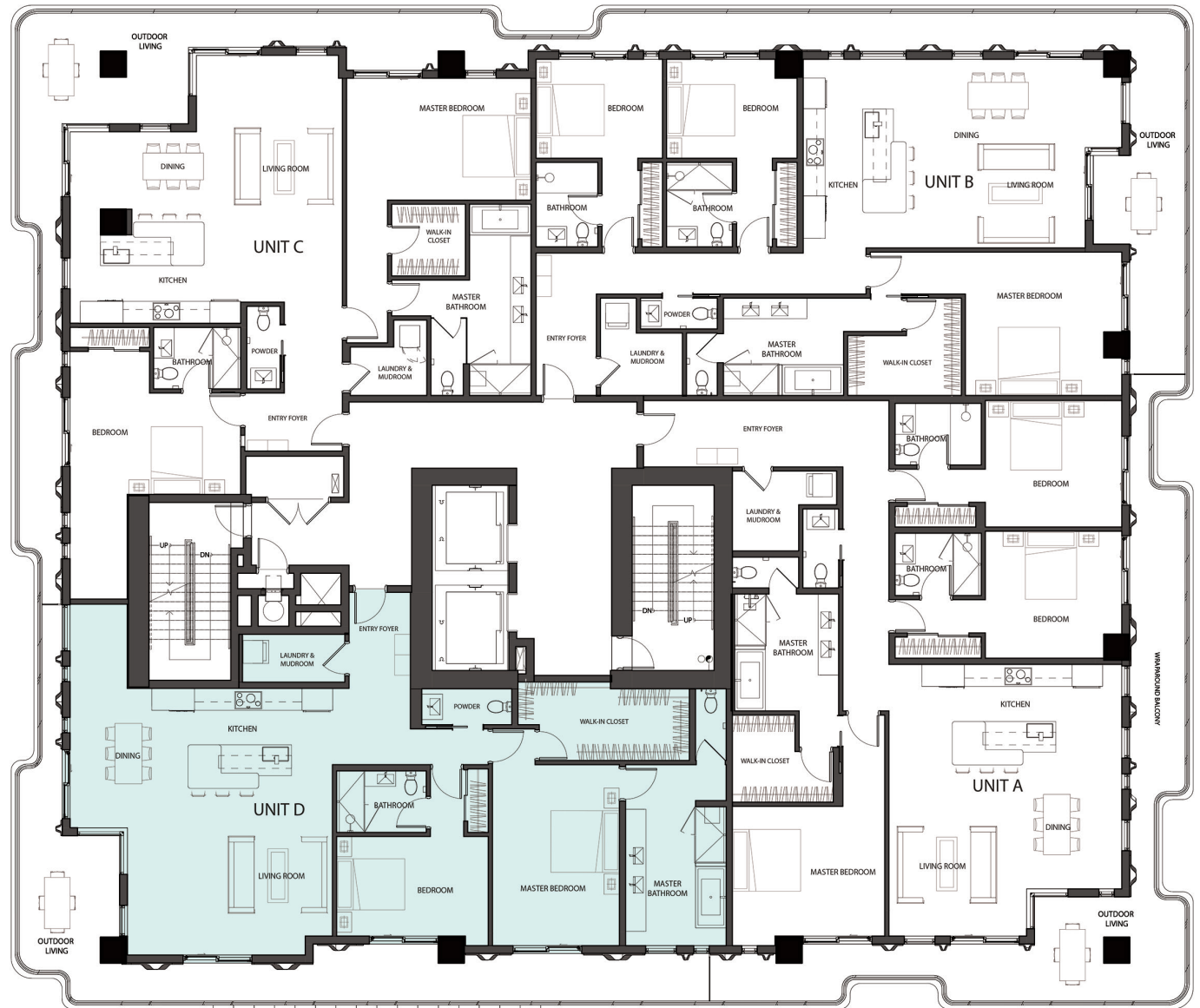
1872 Sq. Ft.

**Terrace/Balcony Area:**

557 Sq. Ft.

**Total Area:**

2429 Sq. Ft.





# 7918

BY PACIFIC & ORIENT PROPERTIES, LLC

**LEVEL 9**

**RESIDENCE 901  
UNIT A**

3 Bedrooms

3.5 Bathrooms

**Interior Area:**

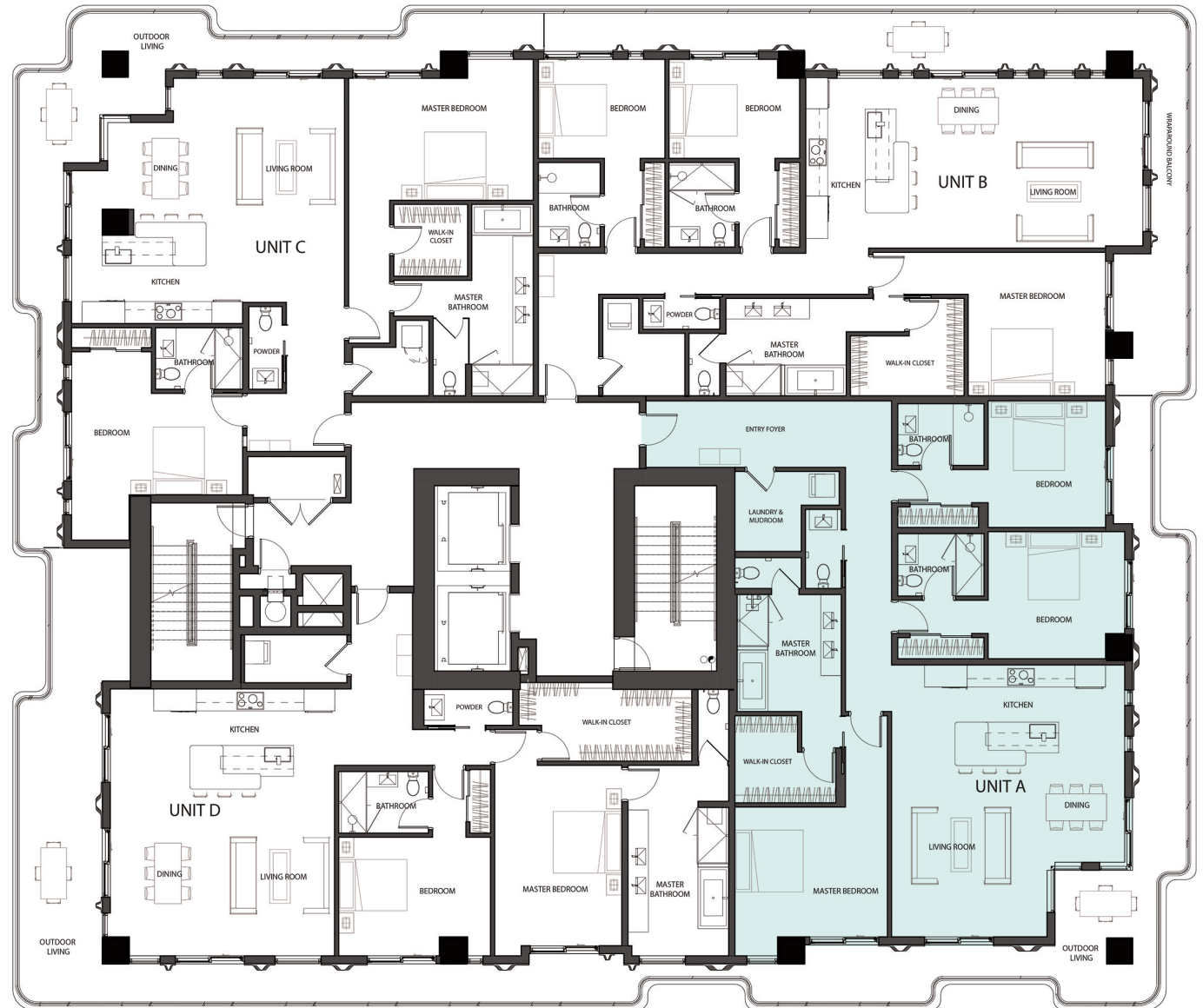
2098 Sq. Ft.

**Terrace/Balcony Area:**

569 Sq. Ft.

**Total Area:**

2667 Sq. Ft.



**SOLD**

7918

BY PACIFIC & ORIENT PROPERTIES, LLC

**LEVEL 9**

**RESIDENCE 902  
UNIT B**

3 Bedrooms

3.5 Bathrooms

**Interior Area:**

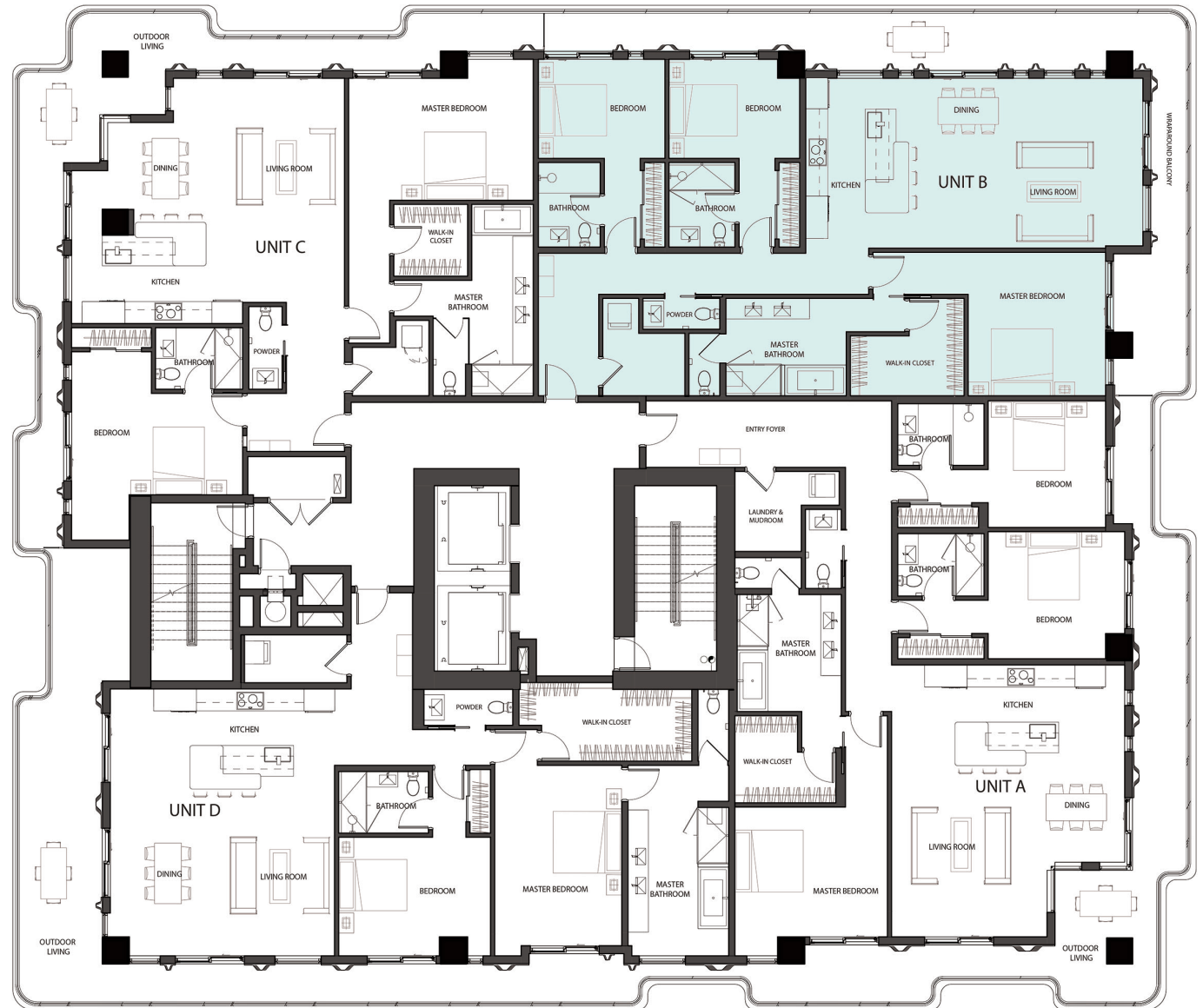
1923 Sq. Ft.

**Terrace/Balcony Area:**

549 Sq. Ft.

**Total Area:**

2472 Sq. Ft.



# 7918

BY PACIFIC & ORIENT PROPERTIES, LLC

**LEVEL 9**

**RESIDENCE 903  
UNIT C**

2 Bedrooms

2.5 Bathrooms

**Interior Area:**

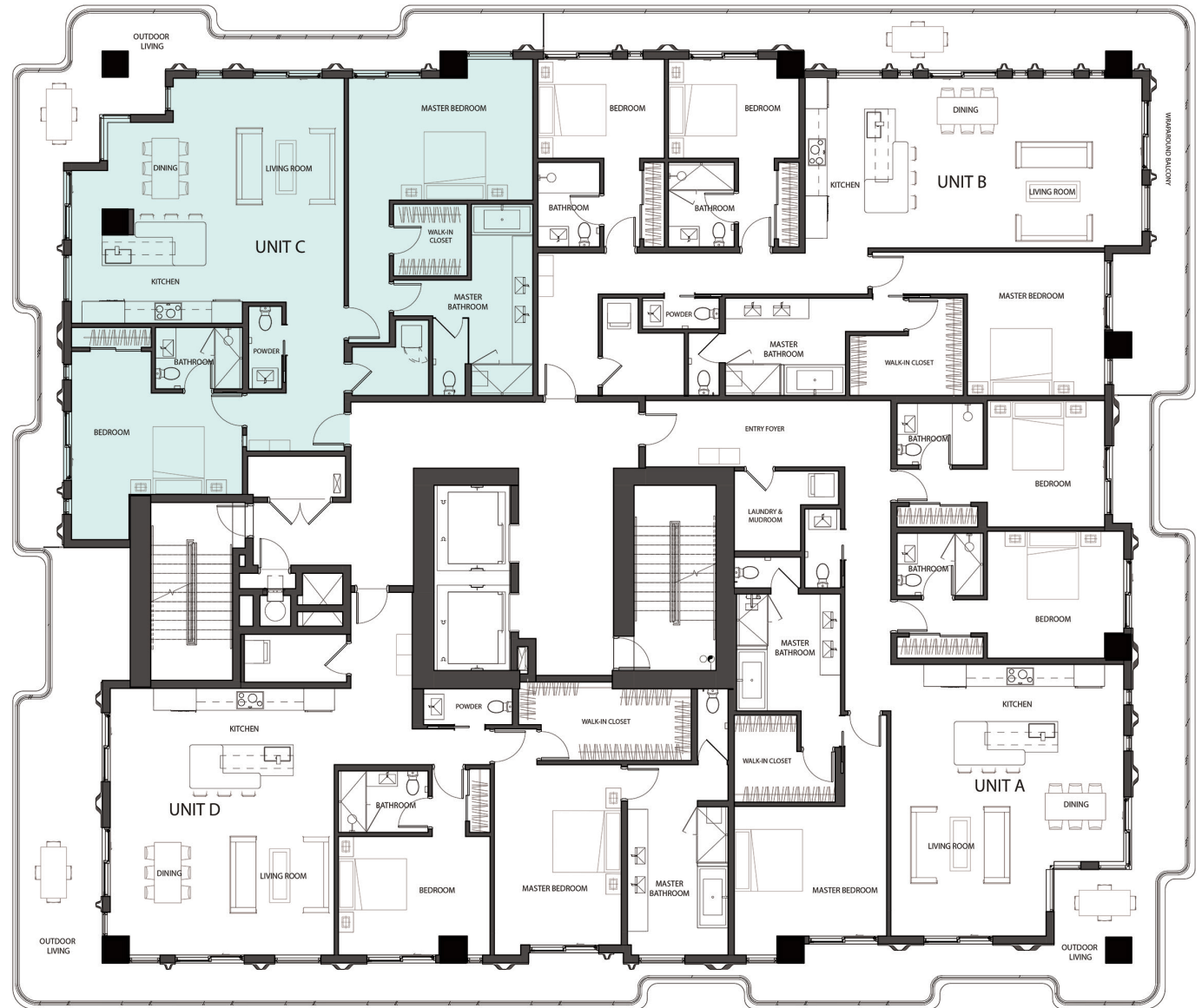
1708 Sq. Ft.

**Terrace/Balcony Area:**

603 Sq. Ft.

**Total Area:**

2311 Sq. Ft.



# 7918

BY PACIFIC & ORIENT PROPERTIES, LLC

**LEVEL 9**

**RESIDENCE 904  
UNIT D**

2 Bedrooms

2.5 Bathrooms

**Interior Area:**

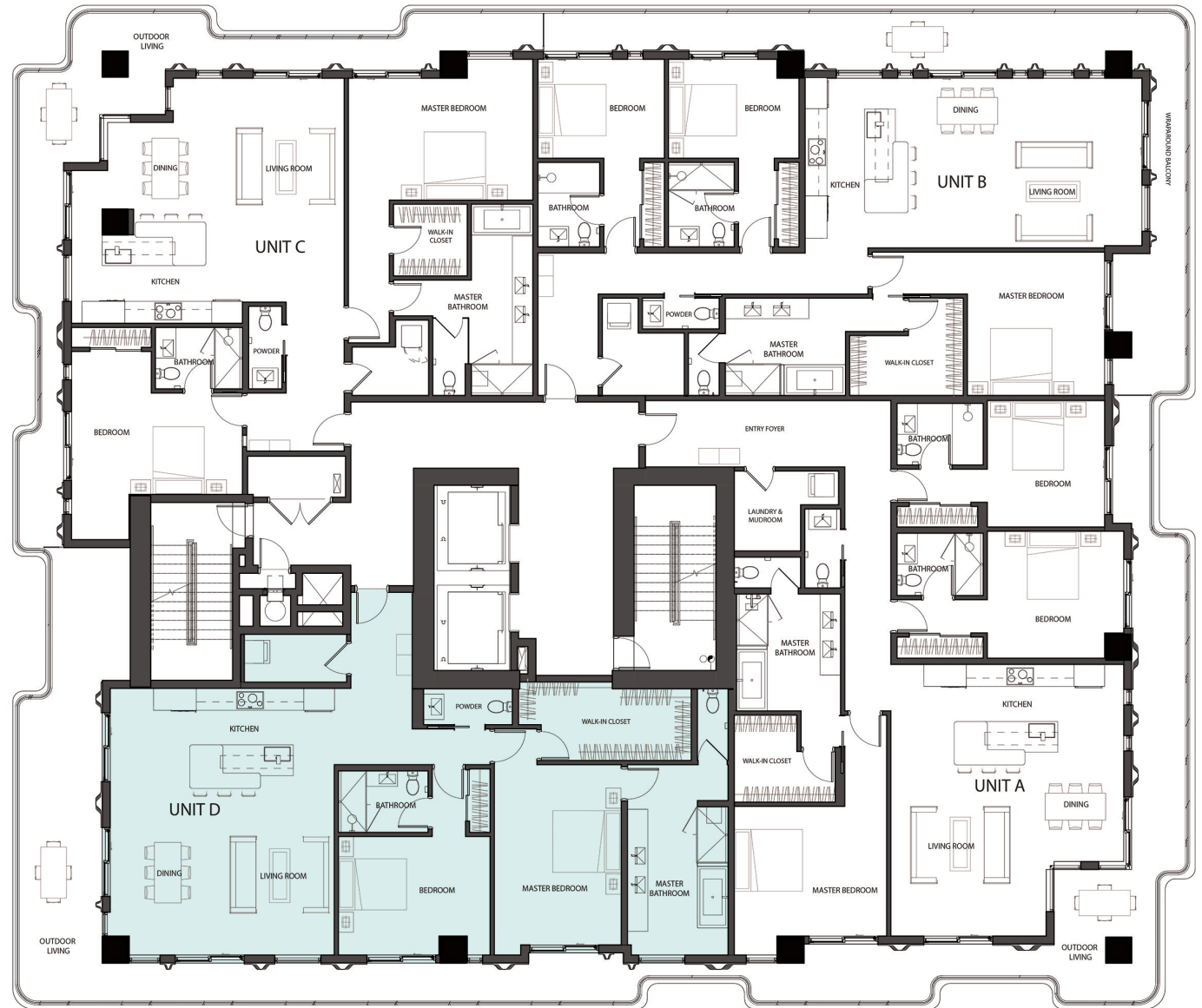
1811 Sq. Ft.

**Terrace/Balcony Area:**

543 Sq. Ft.

**Total Area:**

2354 Sq. Ft.



# 7918

BY PACIFIC & ORIENT PROPERTIES, LLC

**LEVEL 10**

## **RESIDENCE 1001 UNIT A**

**3 Bedrooms**

**3.5 Bathrooms**

**Interior Area:**

**2095 Sq. Ft.**

**Terrace/Balcony Area:**

**618 Sq. Ft.**

**Total Area:**

**2713 Sq. Ft.**



# 7918

BY PACIFIC & ORIENT PROPERTIES, LLC

**LEVEL 10**

**RESIDENCE 1002  
UNIT B**

2 Bedrooms

2.5 Bathrooms

**Interior Area:**

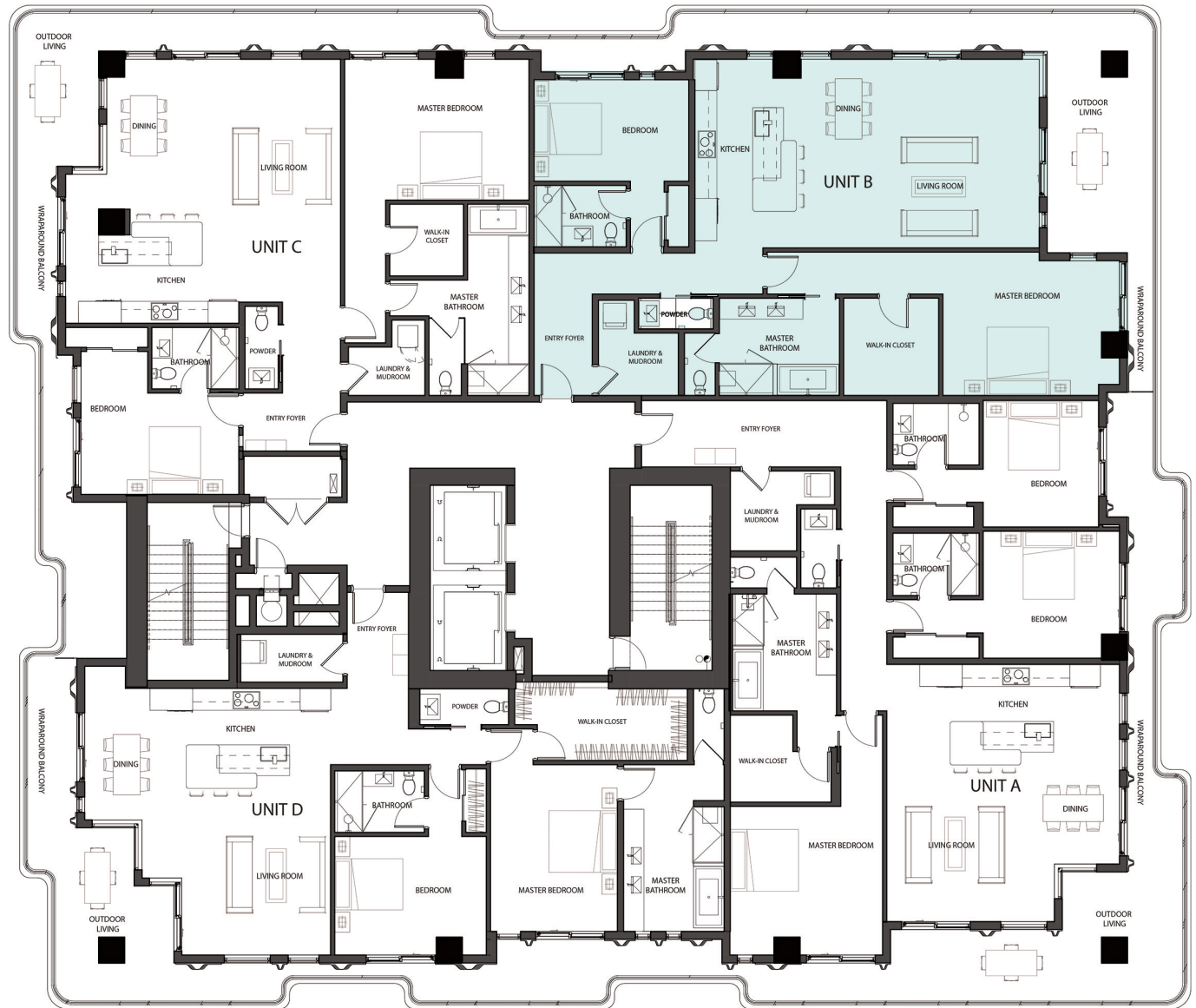
1794 Sq. Ft.

**Terrace/Balcony Area:**

535 Sq. Ft.

**Total Area:**

2329 Sq. Ft.



# 7918

BY PACIFIC & ORIENT PROPERTIES, LLC

**LEVEL 10**

**RESIDENCE 1003  
UNIT C**

2 Bedrooms

2.5 Bathrooms

**Interior Area:**

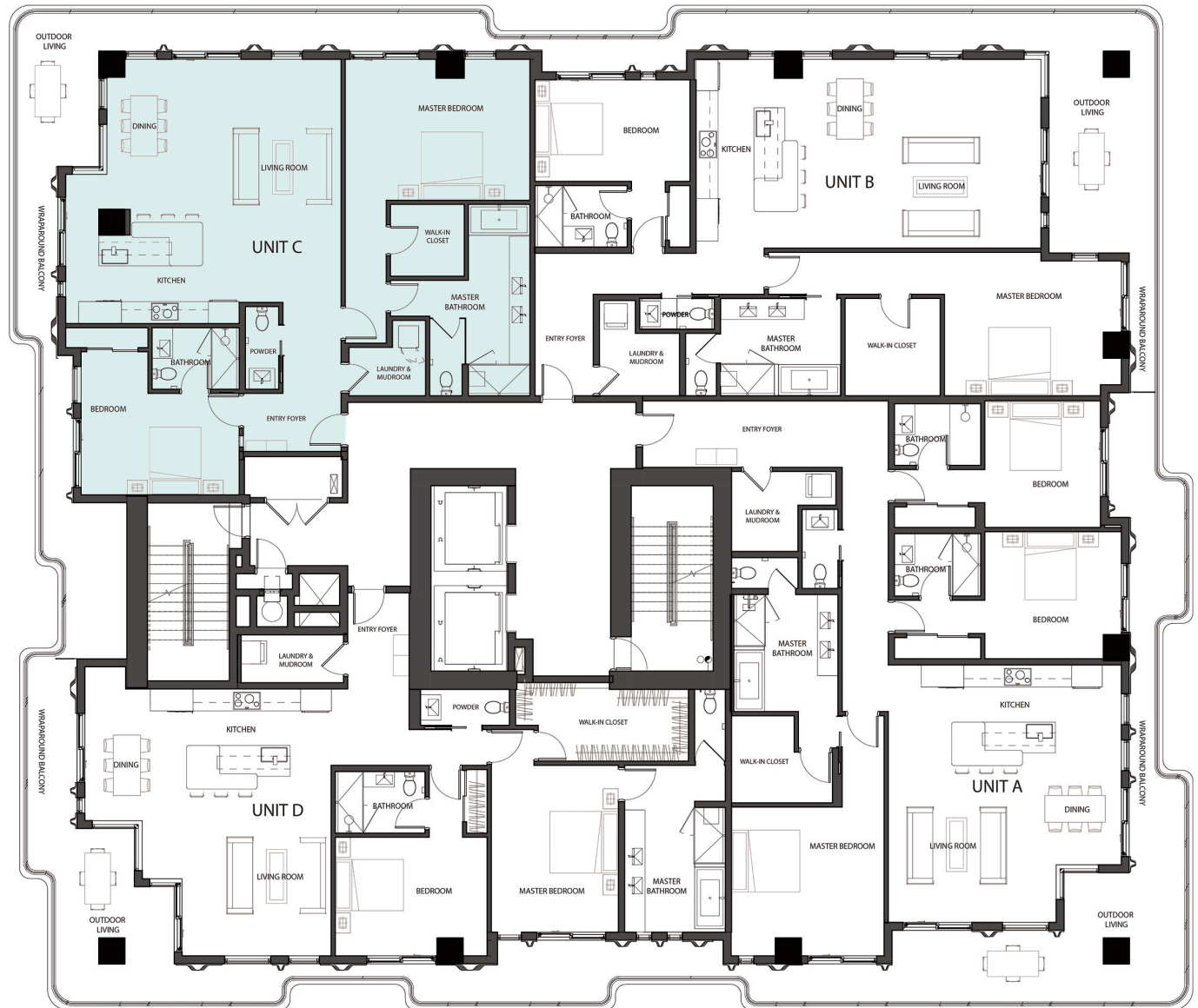
1743 Sq. Ft.

**Terrace/Balcony Area:**

571 Sq. Ft.

**Total Area:**

2314 Sq. Ft.



# 7918

BY PACIFIC & ORIENT PROPERTIES, LLC

**LEVEL 10**

## **RESIDENCE 1004 UNIT D**

2 Bedrooms

2.5 Bathrooms

**Interior Area:**

1738 Sq. Ft.

**Terrace/Balcony Area:**

545 Sq. Ft.

**Total Area:**

2283 Sq. Ft.





# 7918

BY PACIFIC & ORIENT PROPERTIES, LLC

## LEVEL 11

### RESIDENCE 1101 UNIT A

3 Bedrooms

3.5 Bathrooms

**Interior Area:**

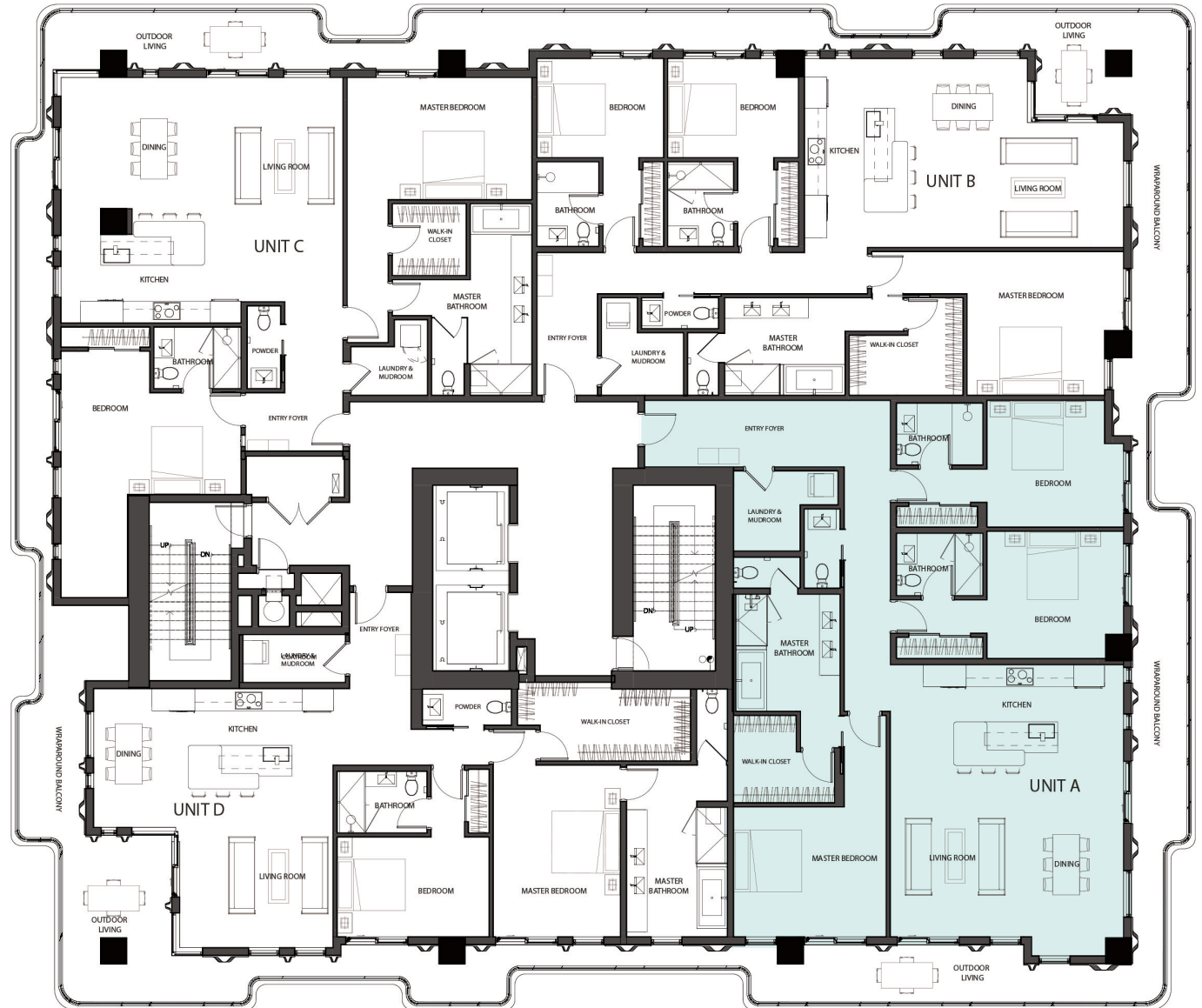
2179 Sq. Ft.

**Terrace/Balcony Area:**

520 Sq. Ft.

**Total Area:**

2699 Sq. Ft.



# 7918

BY PACIFIC & ORIENT PROPERTIES, LLC

## LEVEL 11

### RESIDENCE 1102 UNIT B

3 Bedrooms

3.5 Bathrooms

Interior Area:

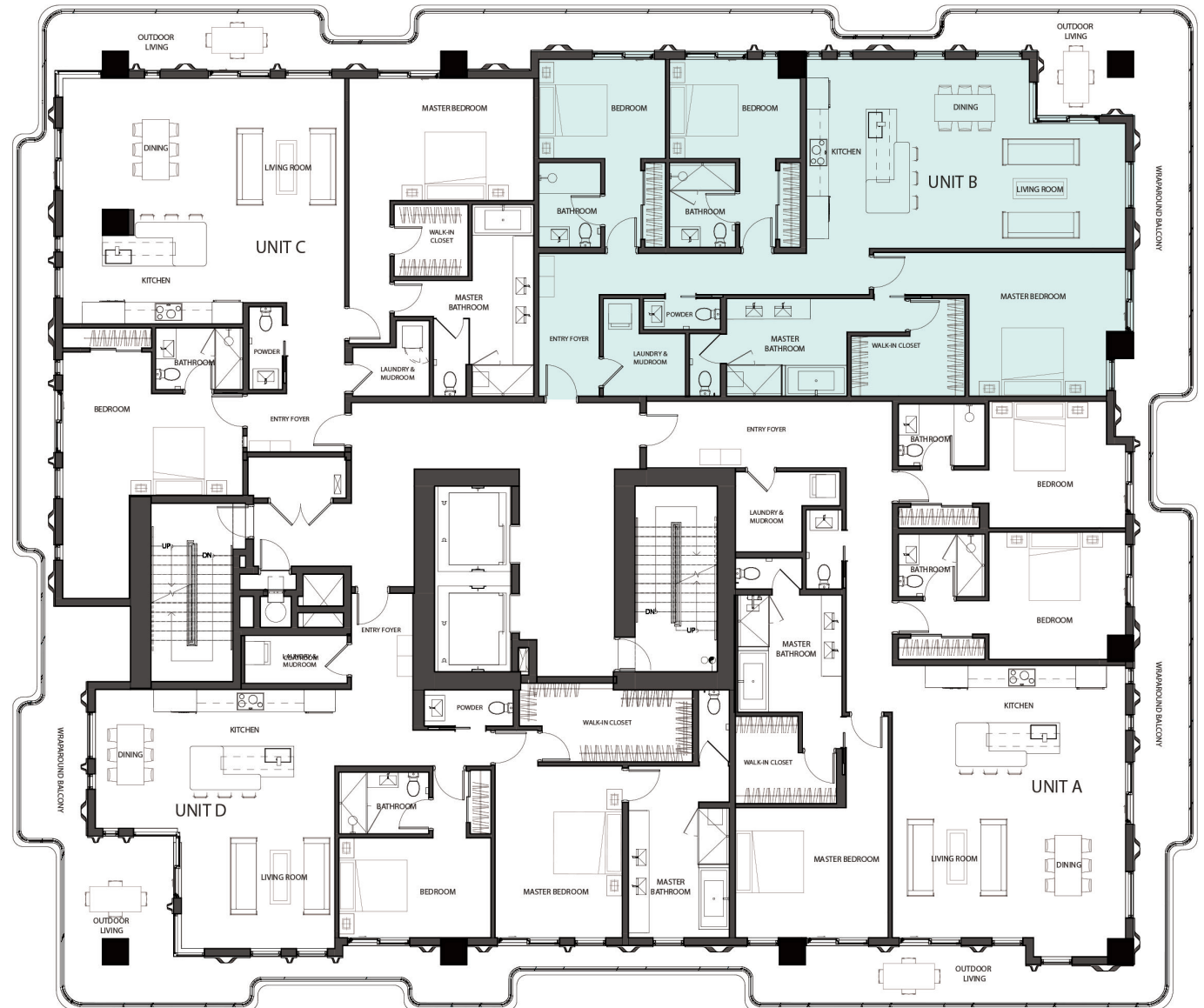
1907 Sq. Ft.

Terrace/Balcony Area:

545 Sq. Ft.

Total Area:

2452 Sq. Ft.



# 7918

BY PACIFIC & ORIENT PROPERTIES, LLC

## LEVEL 11

### RESIDENCE 1103 UNIT C

2 Bedrooms

2.5 Bathrooms

**Interior Area:**

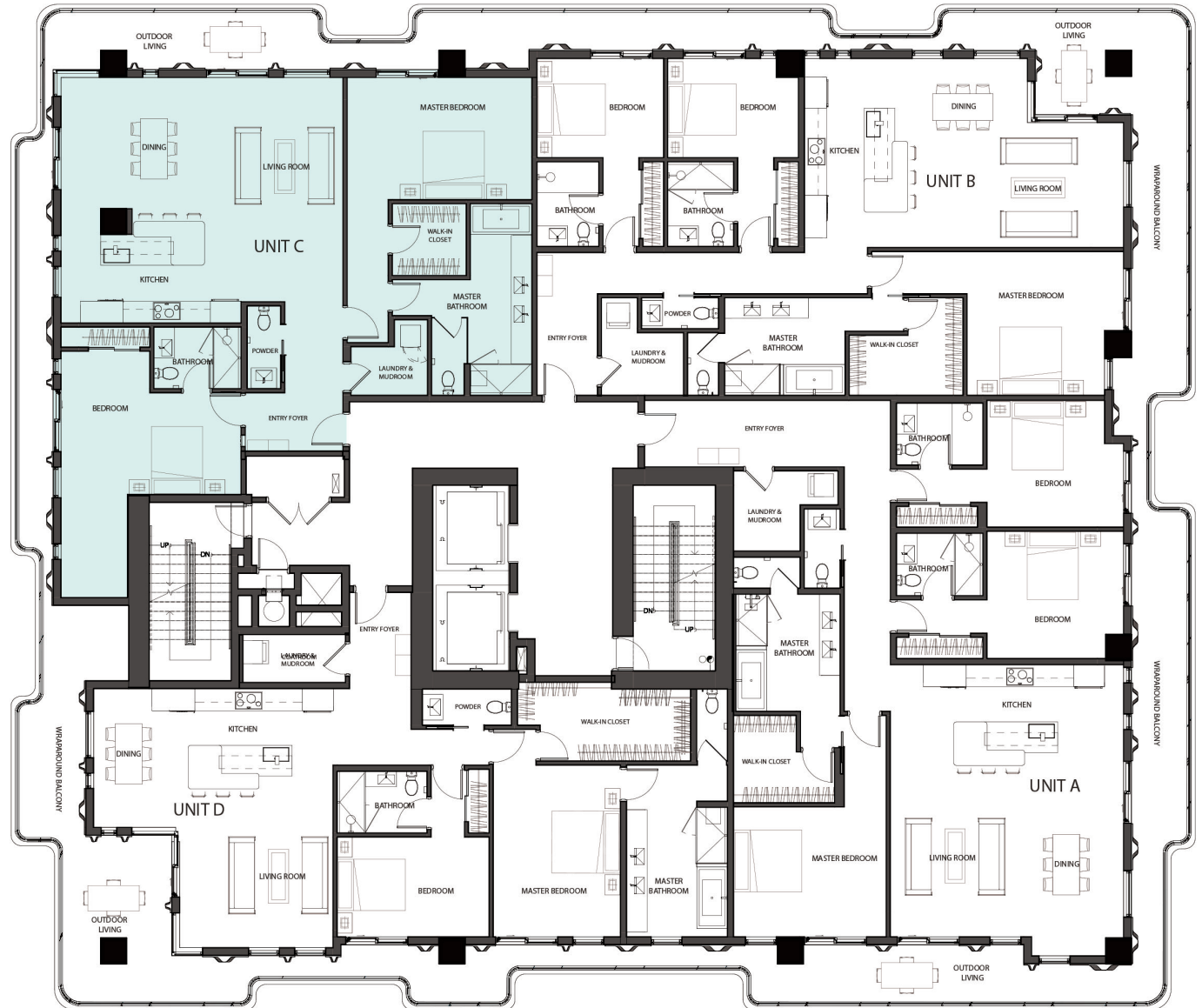
1834 Sq. Ft.

**Terrace/Balcony Area:**

451 Sq. Ft.

**Total Area:**

2285 Sq. Ft.



# 7918

BY PACIFIC & ORIENT PROPERTIES, LLC

## LEVEL 11

### RESIDENCE 1104 UNIT D

2 Bedrooms

2.5 Bathrooms

Interior Area:

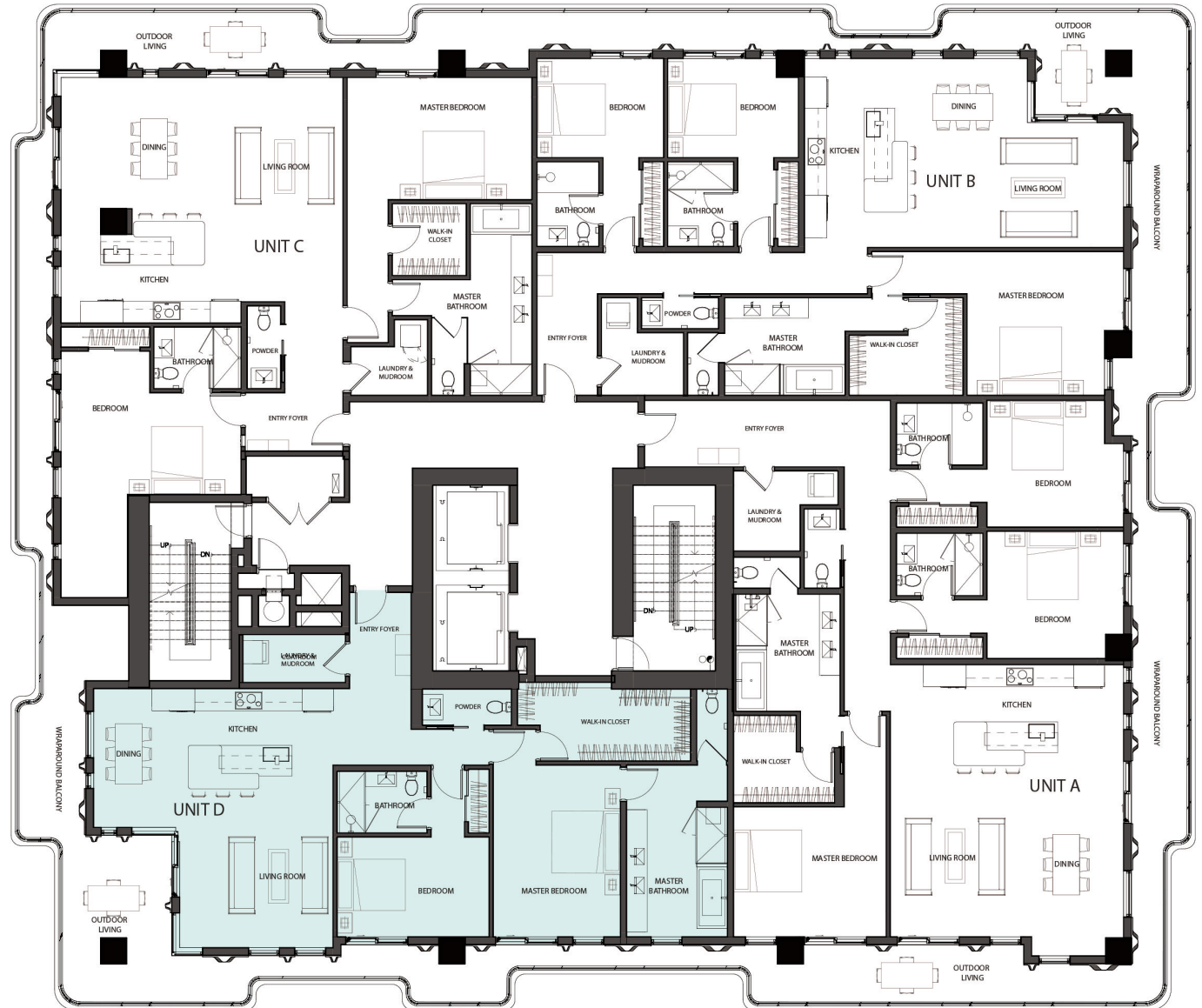
1677 Sq. Ft.

Terrace/Balcony Area:

600 Sq. Ft.

Total Area:

2277 Sq. Ft.



# 7918

BY PACIFIC & ORIENT PROPERTIES, LLC

## LEVEL 12

### RESIDENCE 1201 UNIT A

3 Bedrooms

3.5 Bathrooms

Interior Area:

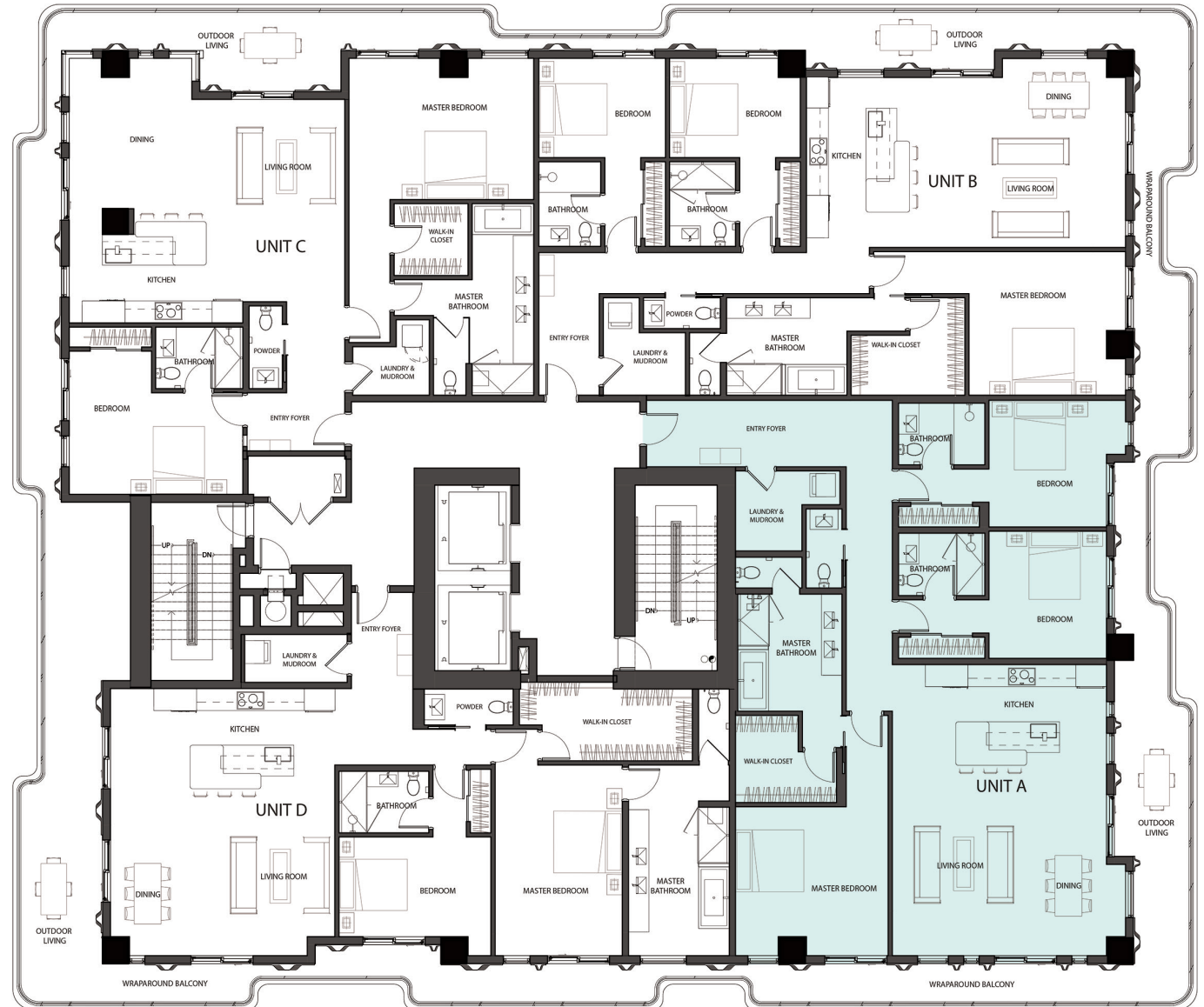
2168 Sq. Ft.

Terrace/Balcony Area:

534 Sq. Ft.

Total Area:

2702 Sq. Ft.



# 7918

BY PACIFIC & ORIENT PROPERTIES, LLC

## LEVEL 12

### RESIDENCE 1202 UNIT B

3 Bedrooms

3.5 Bathrooms

Interior Area:

1939 Sq. Ft.

Terrace/Balcony Area:

477 Sq. Ft.

Total Area:

2416 Sq. Ft.



# 7918

BY PACIFIC & ORIENT PROPERTIES, LLC

## LEVEL 12

### RESIDENCE 1203 UNIT C

2 Bedrooms

2.5 Bathrooms

**Interior Area:**

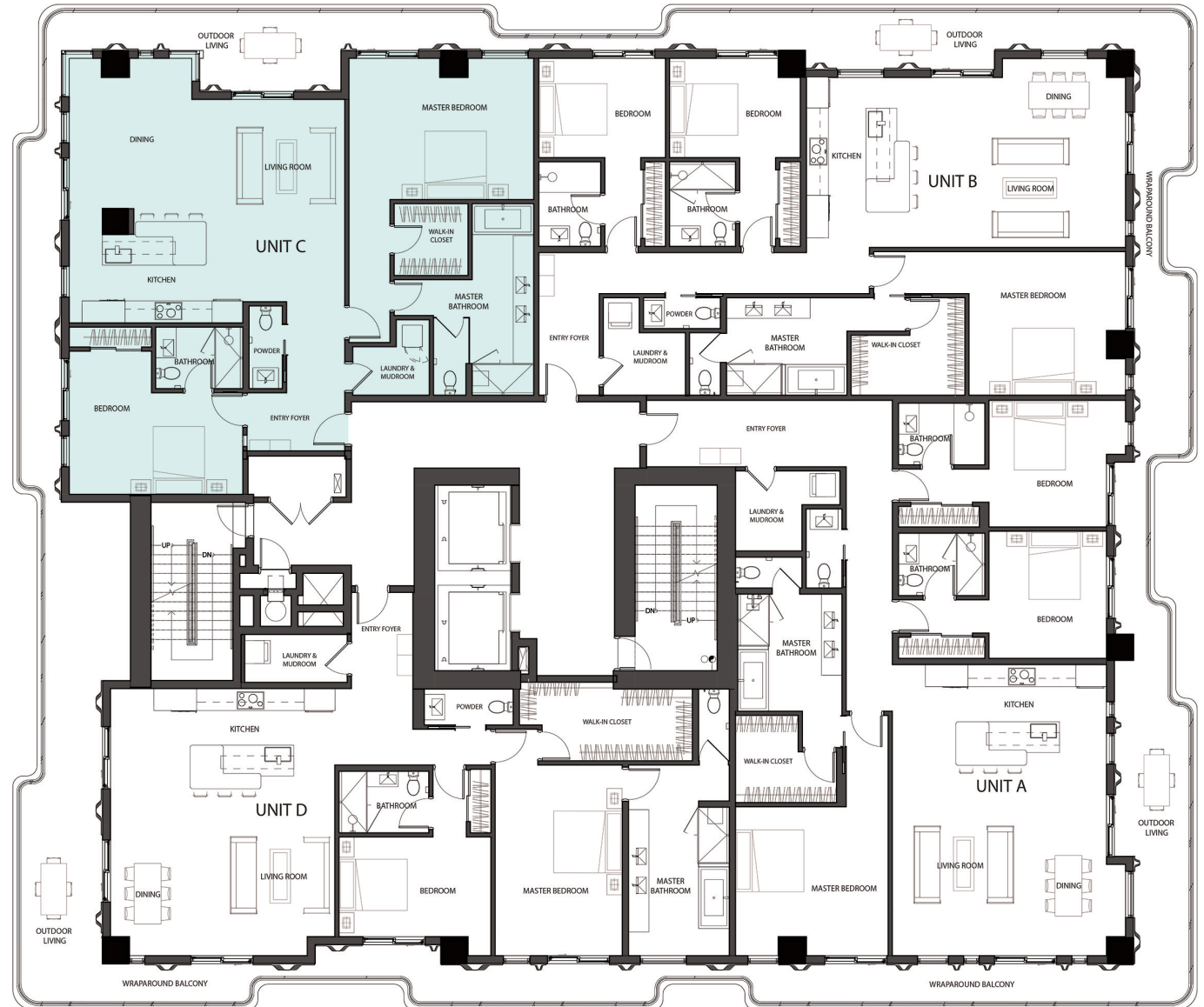
1755 Sq. Ft.

**Terrace/Balcony Area:**

449 Sq. Ft.

**Total Area:**

2204 Sq. Ft.



# 7918

BY PACIFIC & ORIENT PROPERTIES, LLC

## LEVEL 12

### RESIDENCE 1204 UNIT D

2 Bedrooms

2.5 Bathrooms

Interior Area:

1797 Sq. Ft.

Terrace/Balcony Area:

663 Sq. Ft.

Total Area:

2460 Sq. Ft.





# 7918

BY PACIFIC & ORIENT PROPERTIES, LLC

## LEVEL 13

### RESIDENCE 1301 UNIT A

3 Bedrooms

3.5 Bathrooms

Interior Area:

2155 Sq. Ft.

Terrace/Balcony Area:

502 Sq. Ft.

Total Area:

2657 Sq. Ft.



# 7918

BY PACIFIC & ORIENT PROPERTIES, LLC

## LEVEL 13

### RESIDENCE 1302 UNIT B

3 Bedrooms

3.5 Bathrooms

Interior Area:

1973 Sq. Ft.

Terrace/Balcony Area:

464 Sq. Ft.

Total Area:

2437 Sq. Ft.



# 7918

BY PACIFIC & ORIENT PROPERTIES, LLC

## LEVEL 13

### RESIDENCE 1303 UNIT C

2 Bedrooms

2.5 Bathrooms

Interior Area:

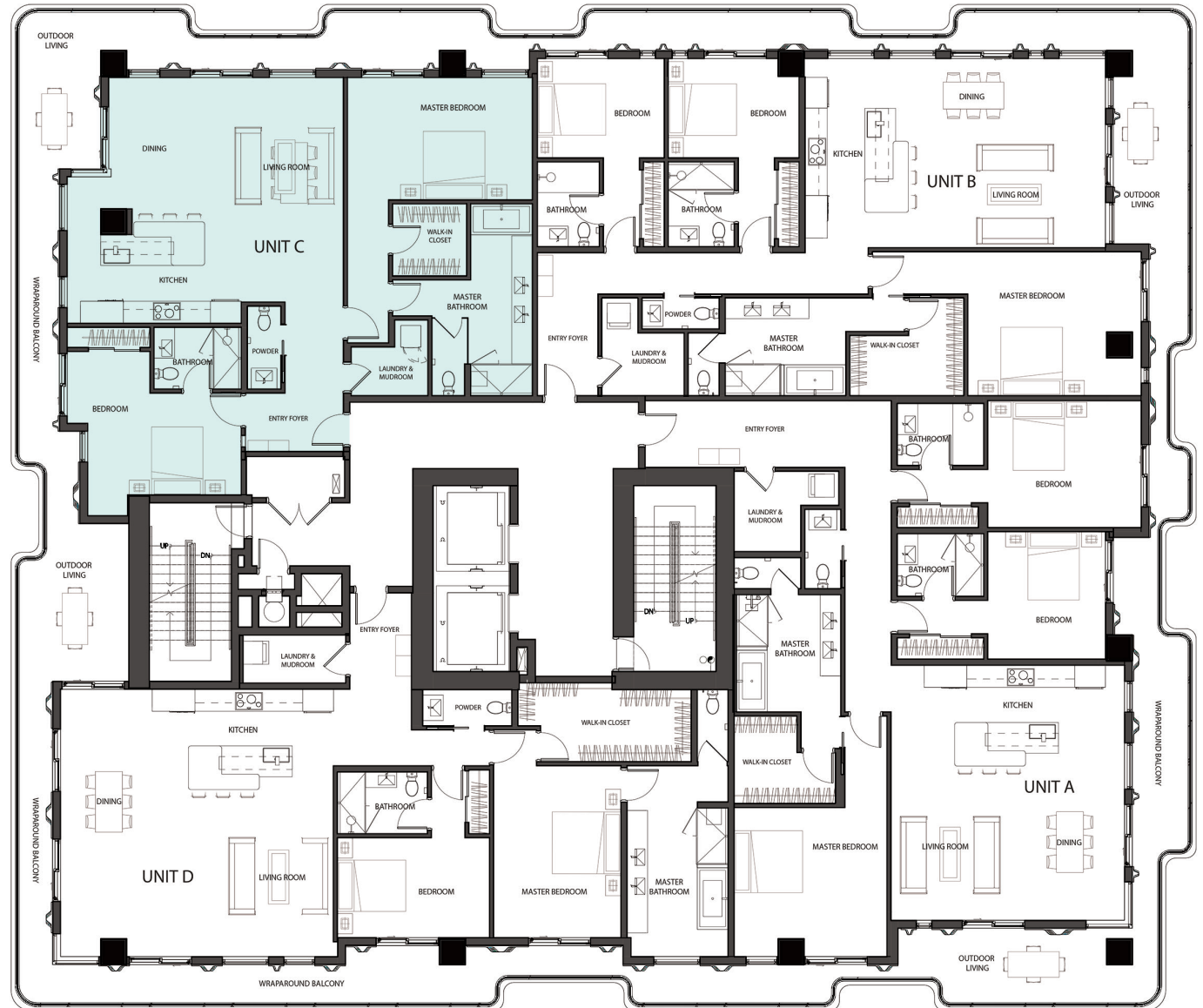
1692 Sq. Ft.

Terrace/Balcony Area:

513 Sq. Ft.

Total Area:

2205 Sq. Ft.



# 7918

BY PACIFIC & ORIENT PROPERTIES, LLC

## LEVEL 13

### RESIDENCE 1304 UNIT D

2 Bedrooms

2.5 Bathrooms

Interior Area:

1904 Sq. Ft.

Terrace/Balcony Area:

596 Sq. Ft.

Total Area:

2500 Sq. Ft.



# 7918

BY PACIFIC & ORIENT PROPERTIES, LLC

## LEVEL 14

### RESIDENCE 1401 UNIT A

3 Bedrooms

3.5 Bathrooms

Interior Area:

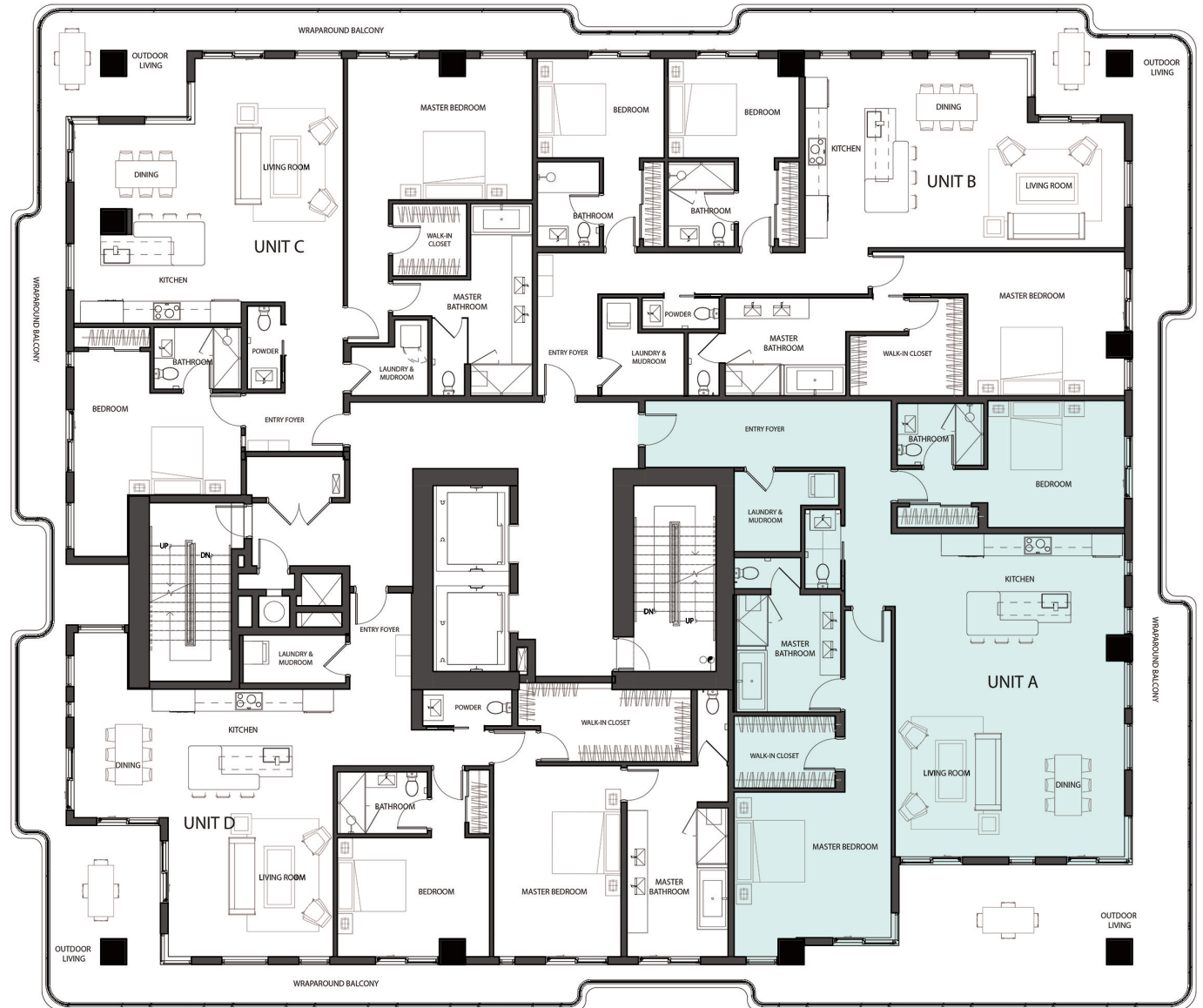
1993 Sq. Ft.

Terrace/Balcony Area:

724 Sq. Ft.

Total Area:

2717 Sq. Ft.



# 7918

BY PACIFIC & ORIENT PROPERTIES, LLC

## LEVEL 14

### RESIDENCE 1402 UNIT B

3 Bedrooms

3.5 Bathrooms

Interior Area:

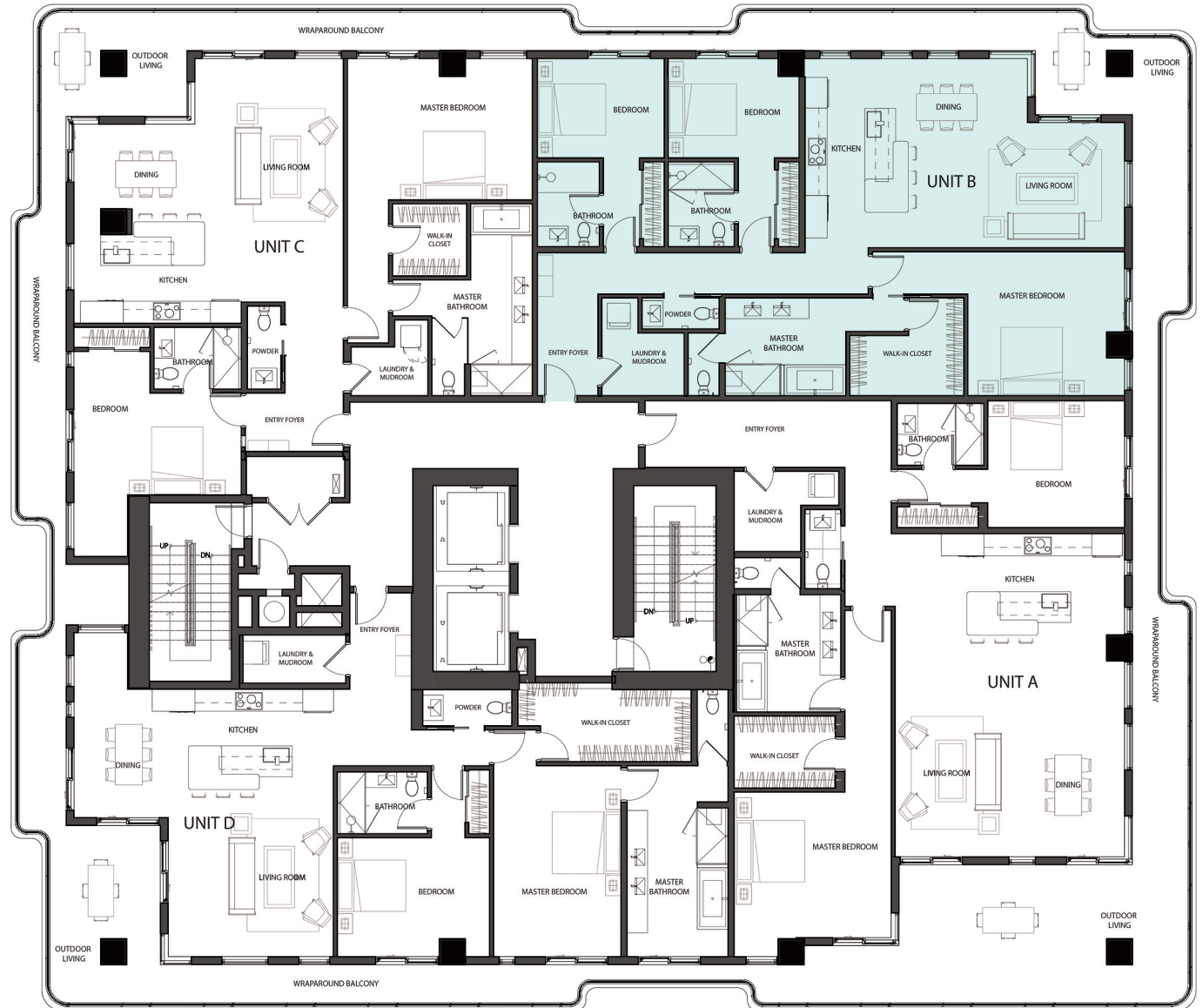
1918 Sq. Ft.

Terrace/Balcony Area:

479 Sq. Ft.

Total Area:

2397 Sq. Ft.



# 7918

BY PACIFIC & ORIENT PROPERTIES, LLC

**LEVEL 14**

## RESIDENCE 1403 UNIT C

2 Bedrooms

2.5 Bathrooms

**Interior Area:**

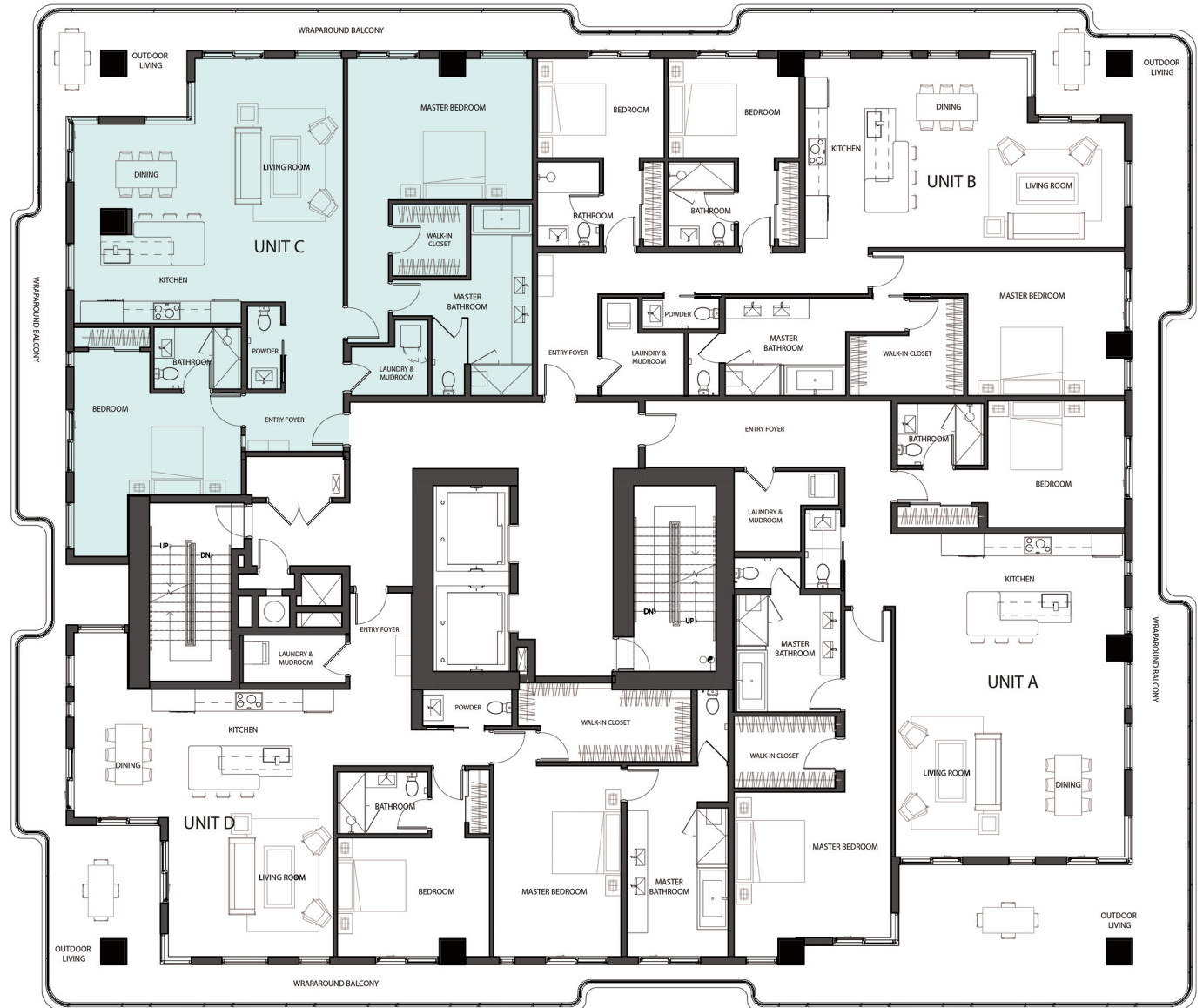
1752 Sq. Ft.

**Terrace/Balcony Area:**

516 Sq. Ft.

**Total Area:**

2268 Sq. Ft.



# 7918

BY PACIFIC & ORIENT PROPERTIES, LLC

## LEVEL 14

### RESIDENCE 1404 UNIT D

2 Bedrooms

2.5 Bathrooms

**Interior Area:**

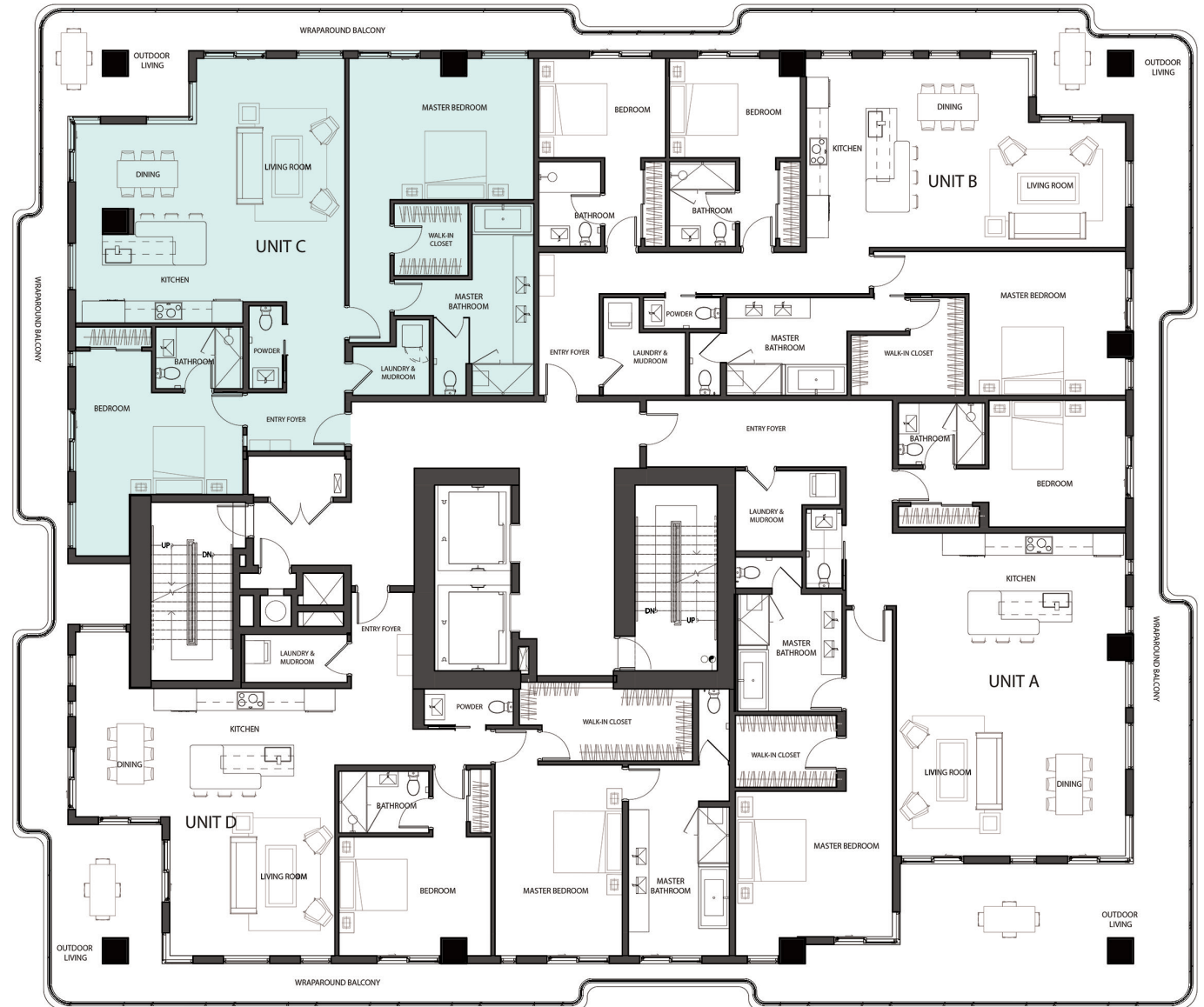
1828 Sq. Ft.

**Terrace/Balcony Area:**

580 Sq. Ft.

**Total Area:**

2408 Sq. Ft.





# 7918

BY PACIFIC & ORIENT PROPERTIES, LLC

**LEVEL 15**

## RESIDENCE 1501 UNIT A

3 Bedrooms

3.5 Bathrooms

**Interior Area:**

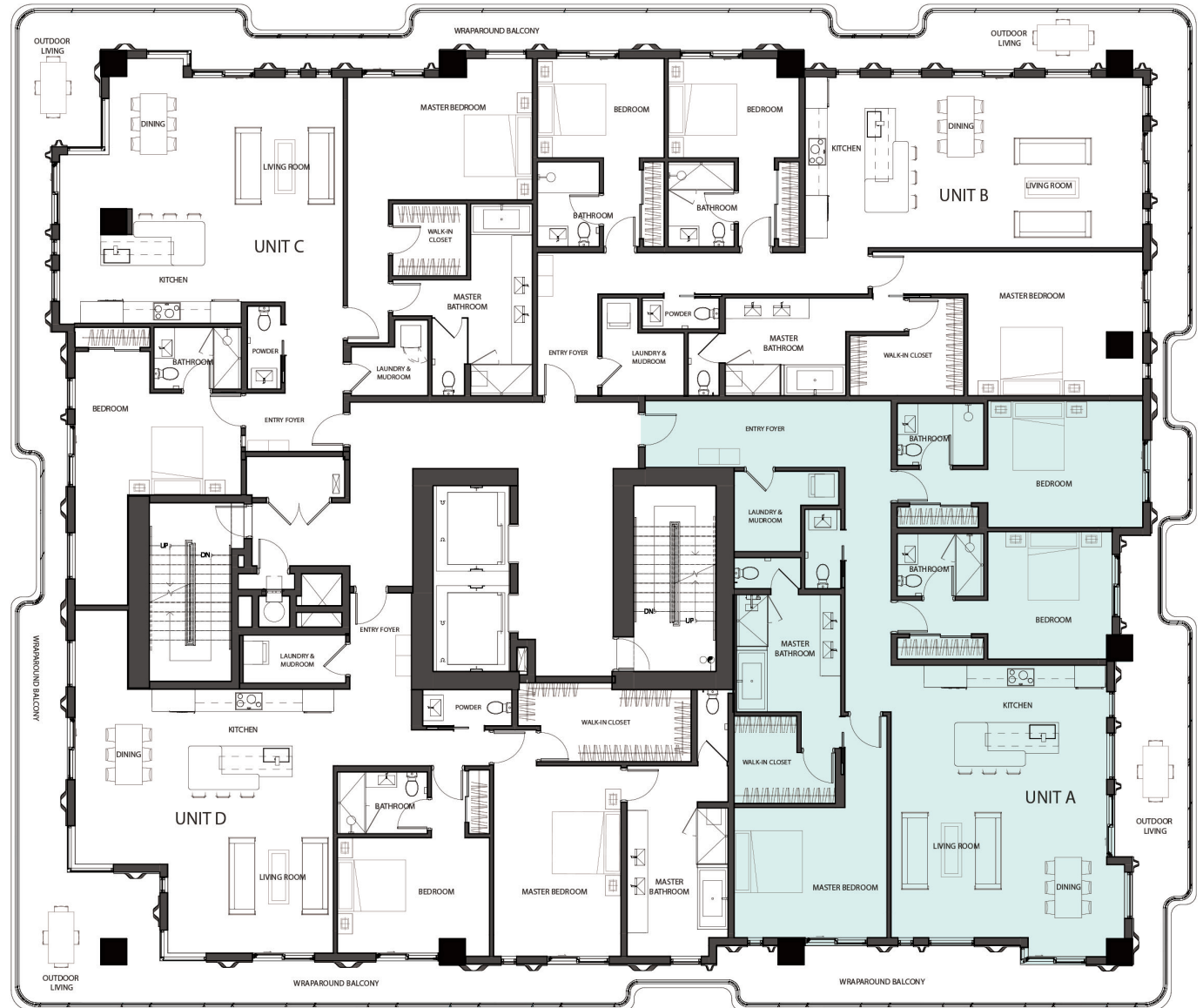
2161 Sq. Ft.

**Terrace/Balcony Area:**

557 Sq. Ft.

**Total Area:**

2718 Sq. Ft.



# 7918

BY PACIFIC & ORIENT PROPERTIES, LLC

**LEVEL 15**

## **RESIDENCE 1502 UNIT B**

3 Bedrooms

3.5 Bathrooms

**Interior Area:**

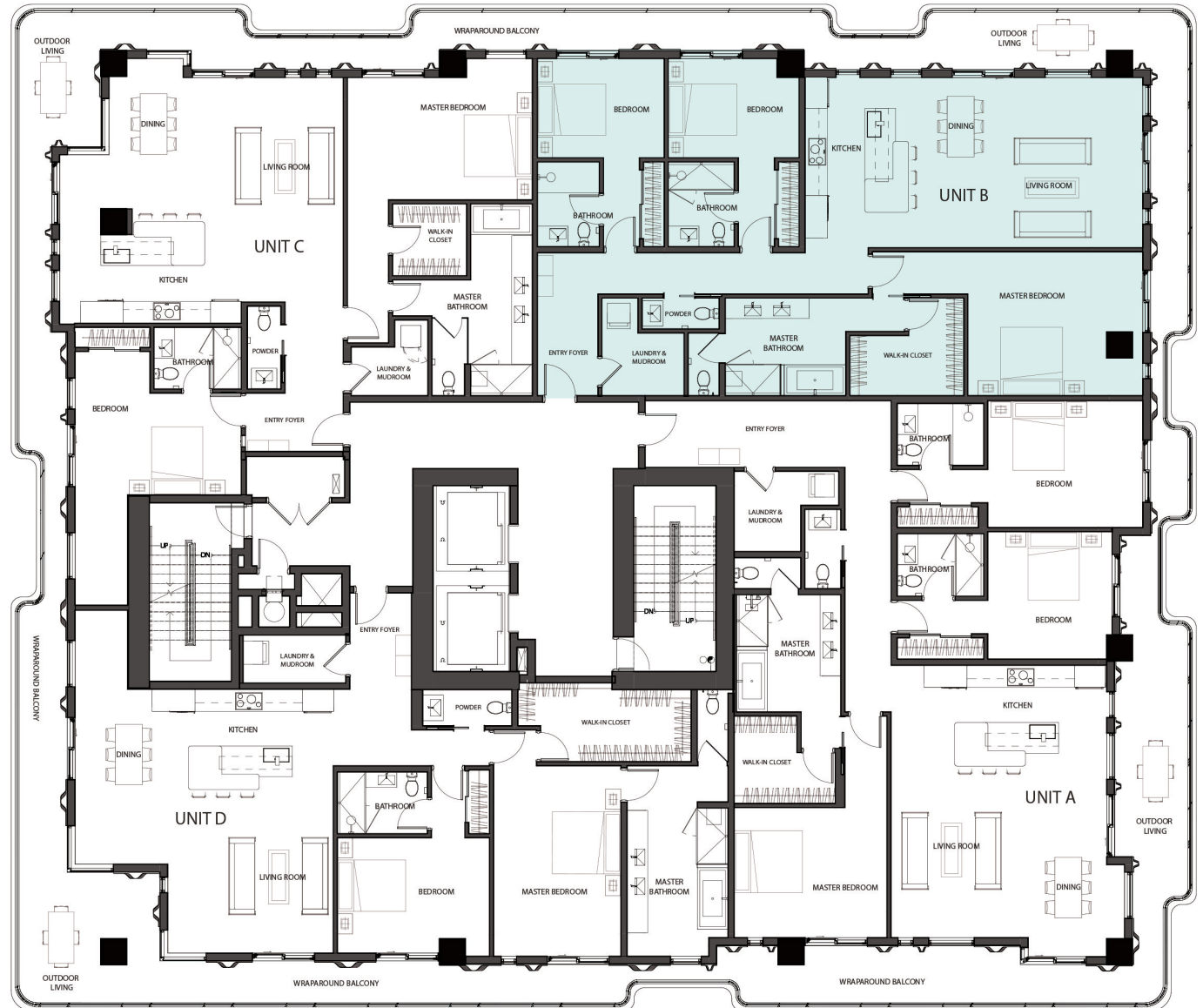
1979 Sq. Ft.

**Terrace/Balcony Area:**

464 Sq. Ft.

**Total Area:**

2443 Sq. Ft.



# 7918

BY PACIFIC & ORIENT PROPERTIES, LLC

## LEVEL 15

### RESIDENCE 1503 UNIT C

2 Bedrooms

2.5 Bathrooms

Interior Area:

1798 Sq. Ft.

Terrace/Balcony Area:

503 Sq. Ft.

Total Area:

2301 Sq. Ft.



# 7918

BY PACIFIC & ORIENT PROPERTIES, LLC

**LEVEL 15**

## **RESIDENCE 1504 UNIT D**

2 Bedrooms

2.5 Bathrooms

**Interior Area:**

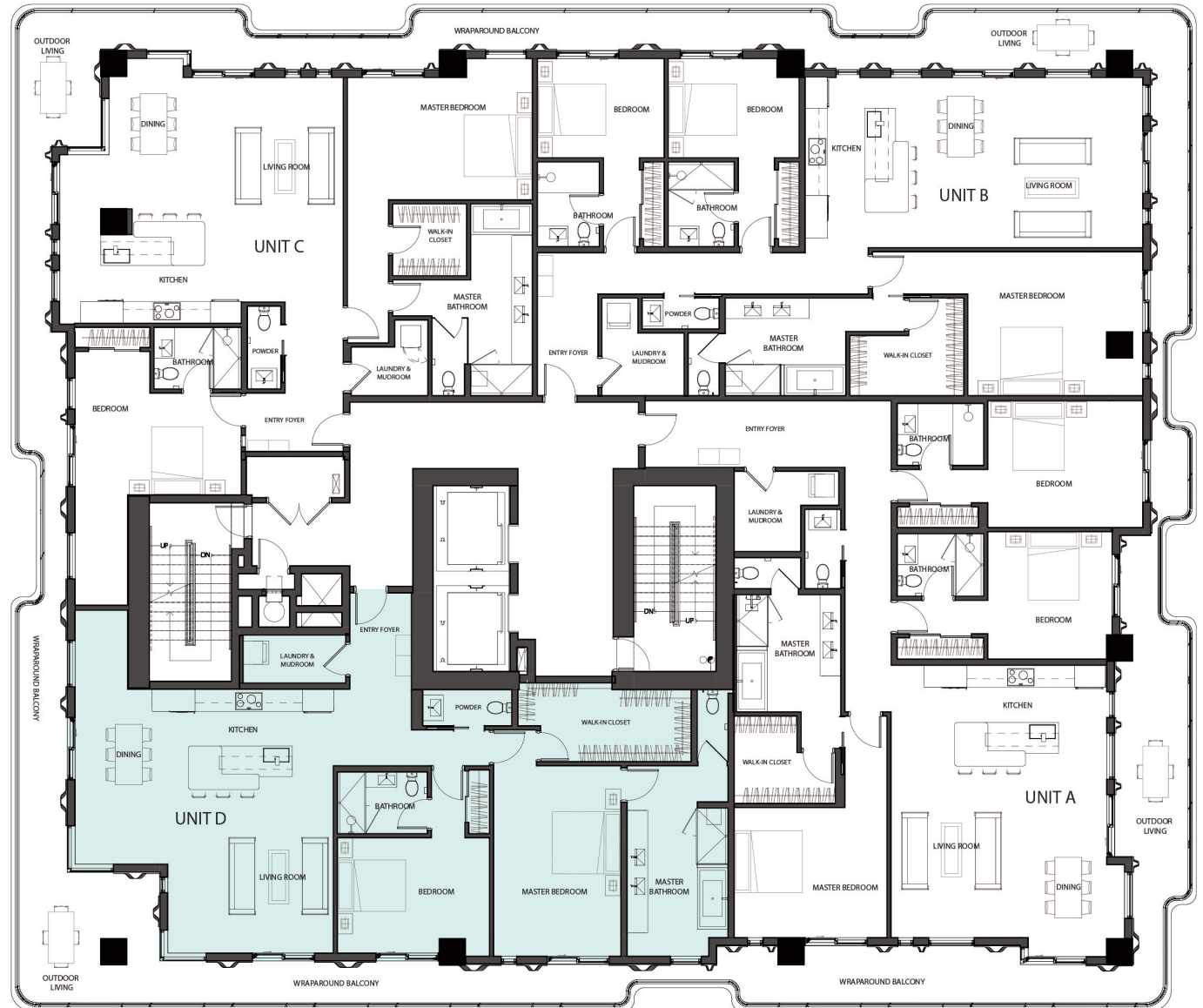
1864 Sq. Ft.

**Terrace/Balcony Area:**

581 Sq. Ft.

**Total Area:**

2445 Sq. Ft.



# 7918

BY PACIFIC & ORIENT PROPERTIES, LLC

## LEVEL 16

### RESIDENCE 1601 UNIT A

3 Bedrooms

3.5 Bathrooms

Interior Area:

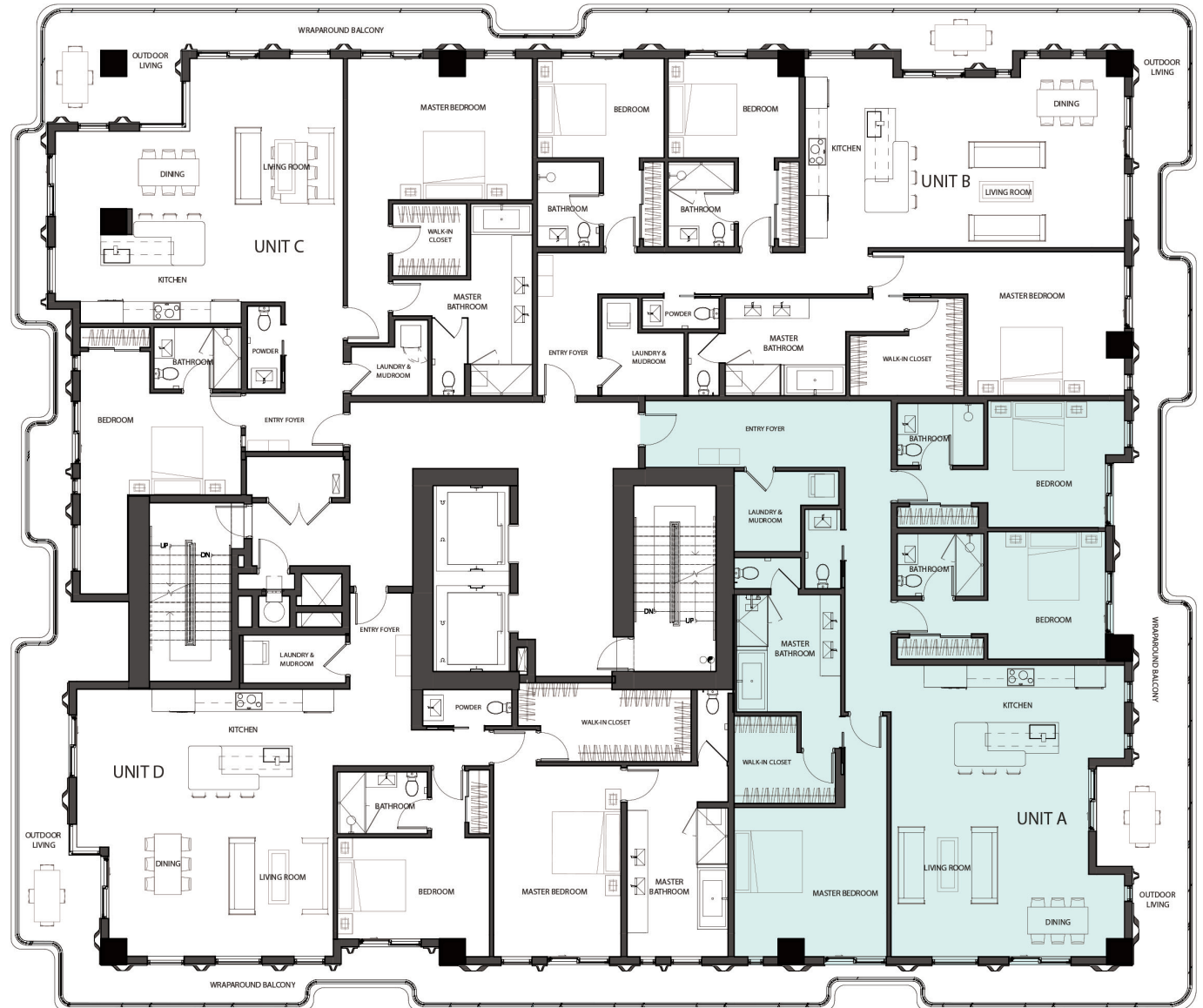
2165 Sq. Ft.

Terrace/Balcony Area:

537 Sq. Ft.

Total Area:

2702 Sq. Ft.



# 7918

BY PACIFIC & ORIENT PROPERTIES, LLC

**LEVEL 16**

## RESIDENCE 1602 UNIT B

3 Bedrooms

3.5 Bathrooms

**Interior Area:**

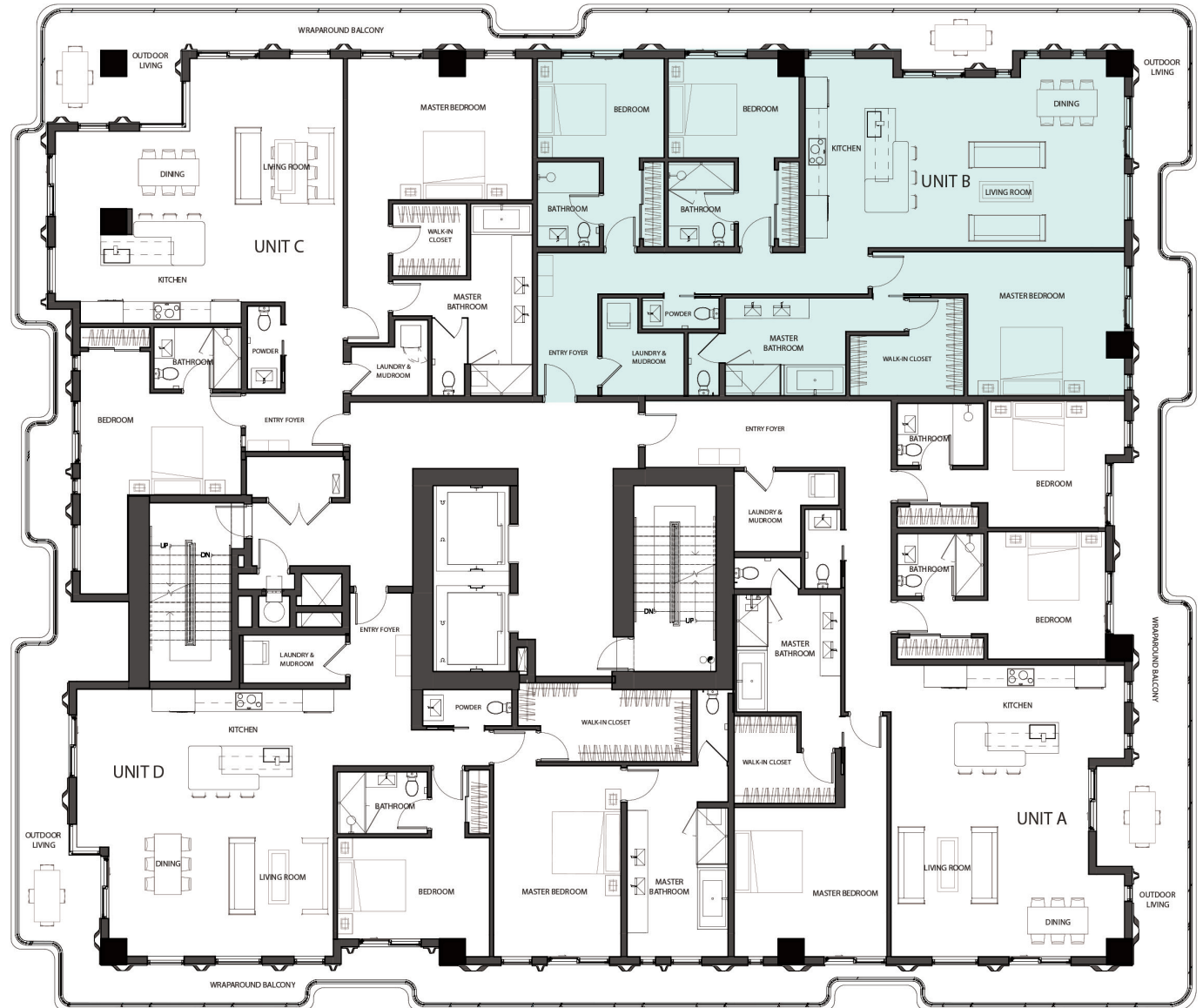
1958 Sq. Ft.

**Terrace/Balcony Area:**

486 Sq. Ft.

**Total Area:**

2444 Sq. Ft.



# 7918

BY PACIFIC & ORIENT PROPERTIES, LLC

## LEVEL 16

### RESIDENCE 1603 UNIT C

2 Bedrooms

2.5 Bathrooms

**Interior Area:**

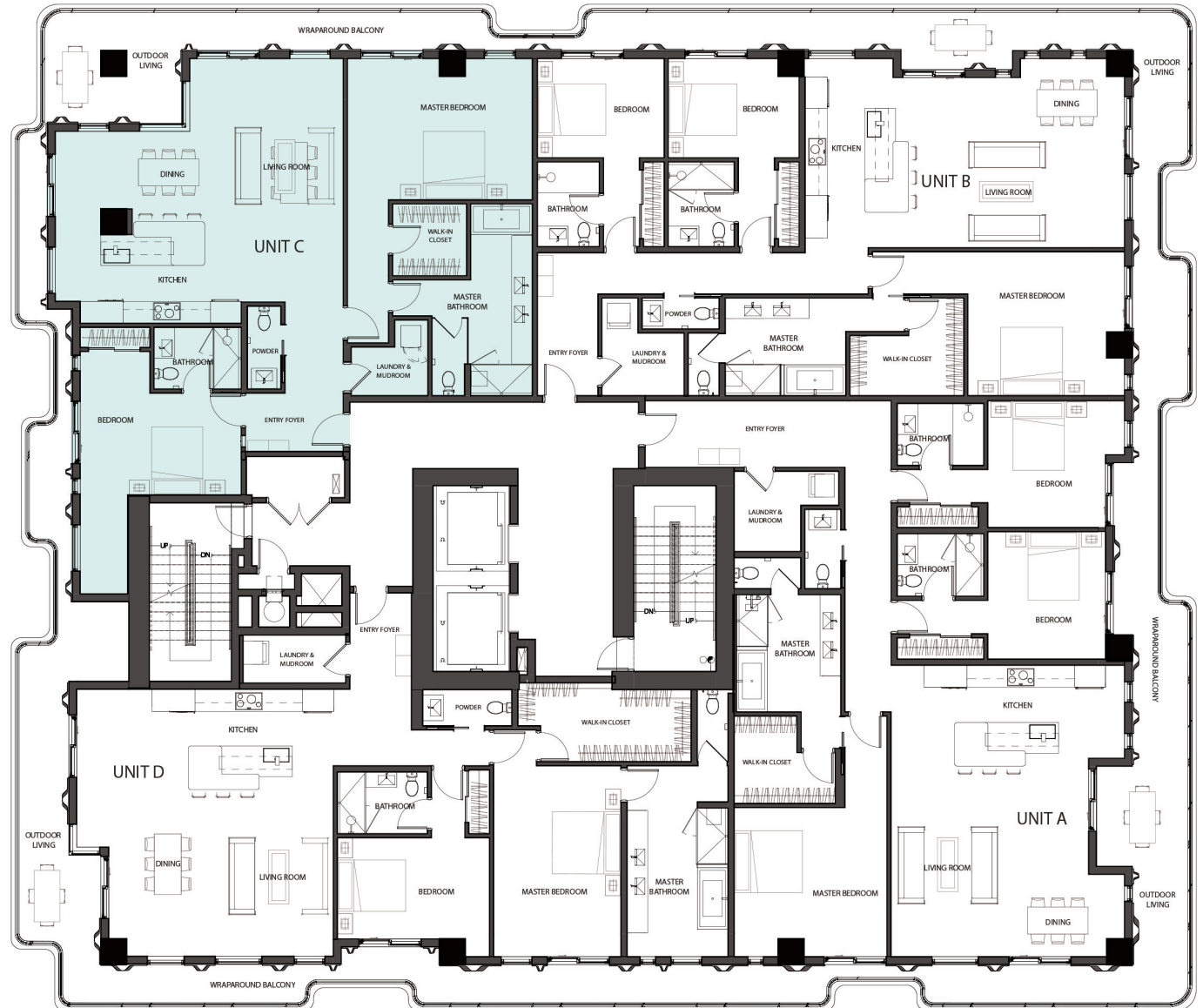
1785 Sq. Ft.

**Terrace/Balcony Area:**

477 Sq. Ft.

**Total Area:**

2262 Sq. Ft.



# 7918

BY PACIFIC & ORIENT PROPERTIES, LLC

## LEVEL 16

### RESIDENCE 1604 UNIT D

2 Bedrooms

2.5 Bathrooms

**Interior Area:**

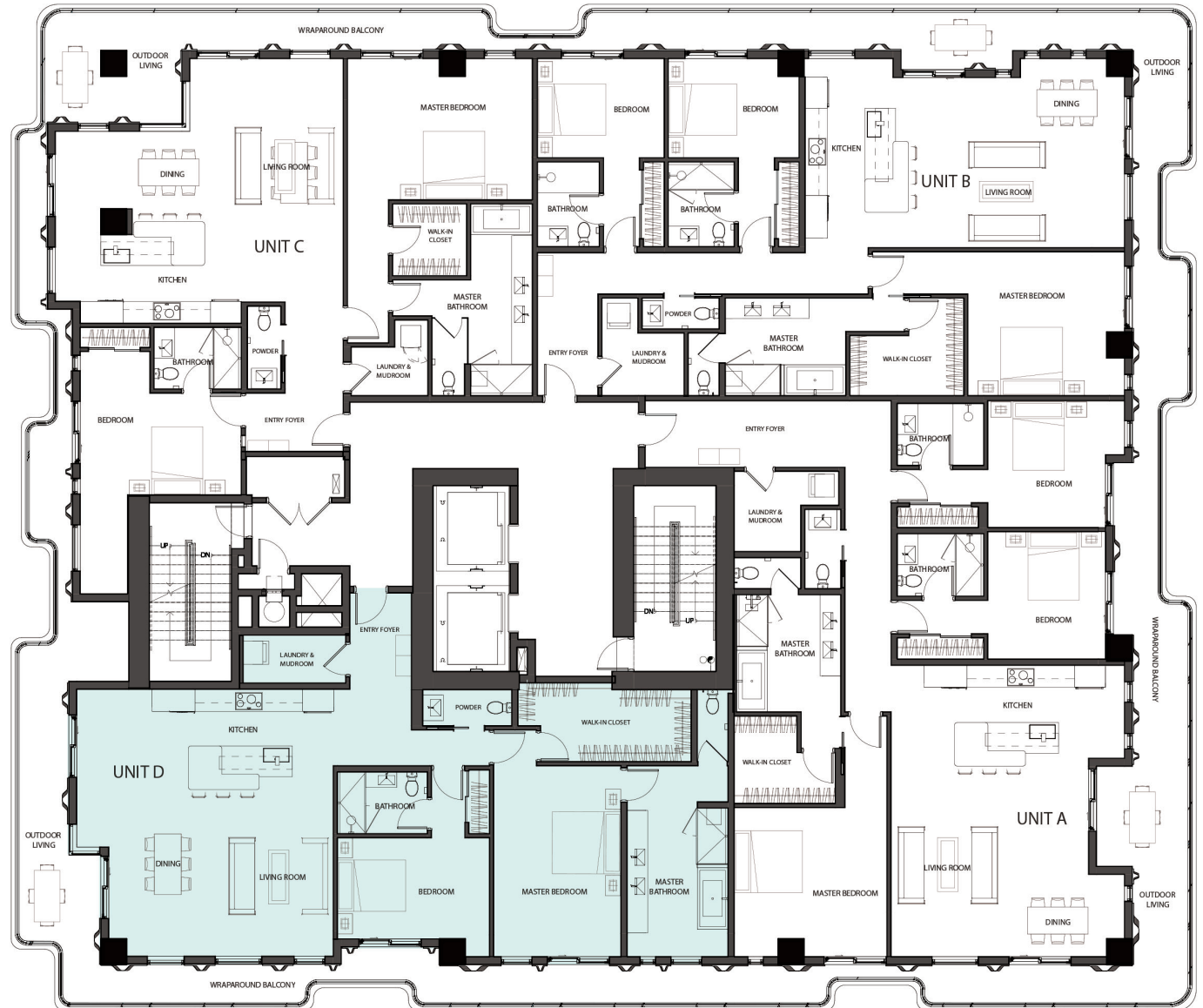
1859 Sq. Ft.

**Terrace/Balcony Area:**

551 Sq. Ft.

**Total Area:**

2410 Sq. Ft.





# 7918

BY PACIFIC & ORIENT PROPERTIES, LLC

## LEVEL 17

### RESIDENCE 1701 UNIT A

3 Bedrooms

3.5 Bathrooms

Interior Area:

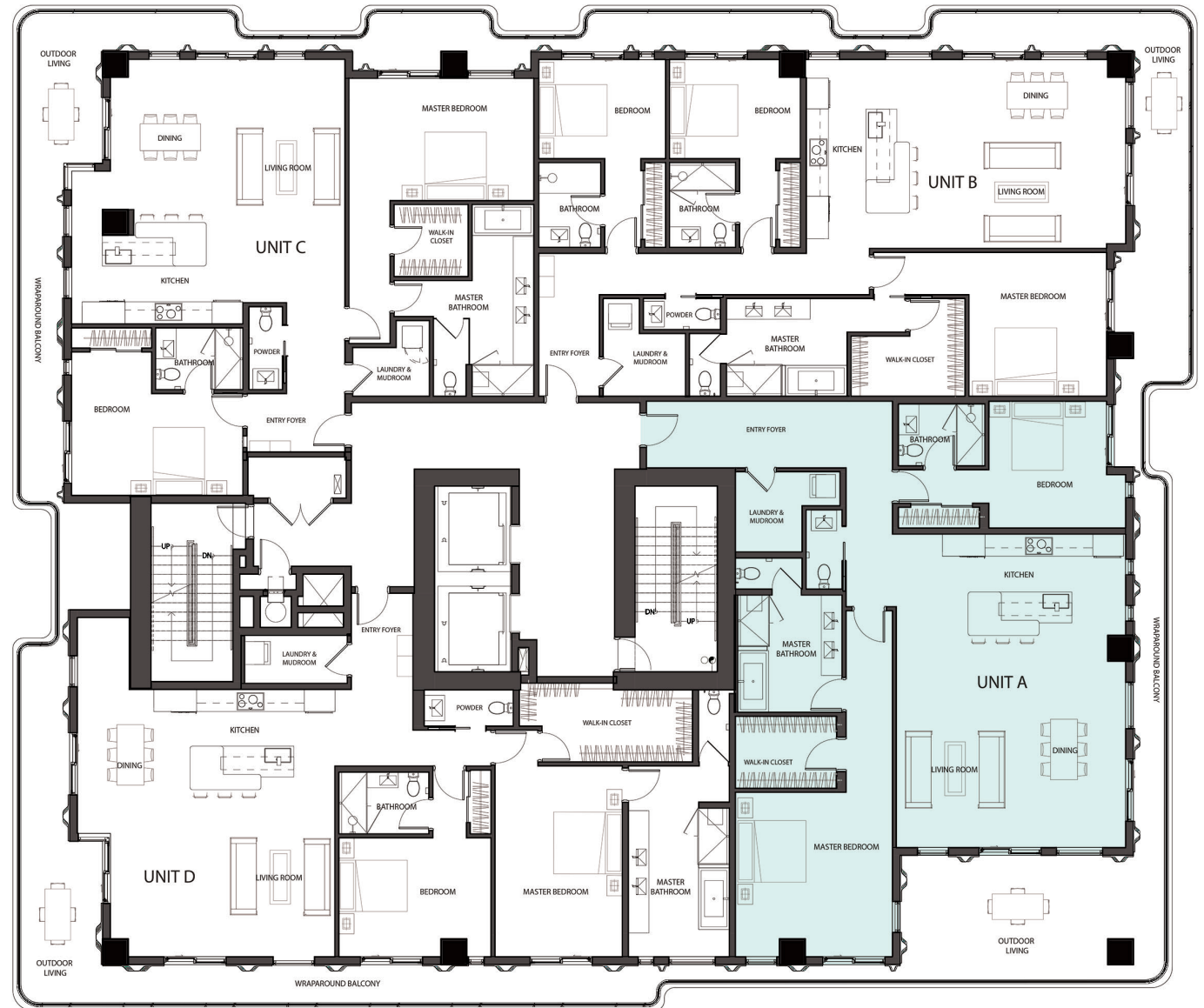
1980 Sq. Ft.

Terrace/Balcony Area:

543 Sq. Ft.

Total Area:

2523 Sq. Ft.



# 7918

BY PACIFIC & ORIENT PROPERTIES, LLC

## LEVEL 17

### RESIDENCE 1702 UNIT B

3 Bedrooms

3.5 Bathrooms

Interior Area:

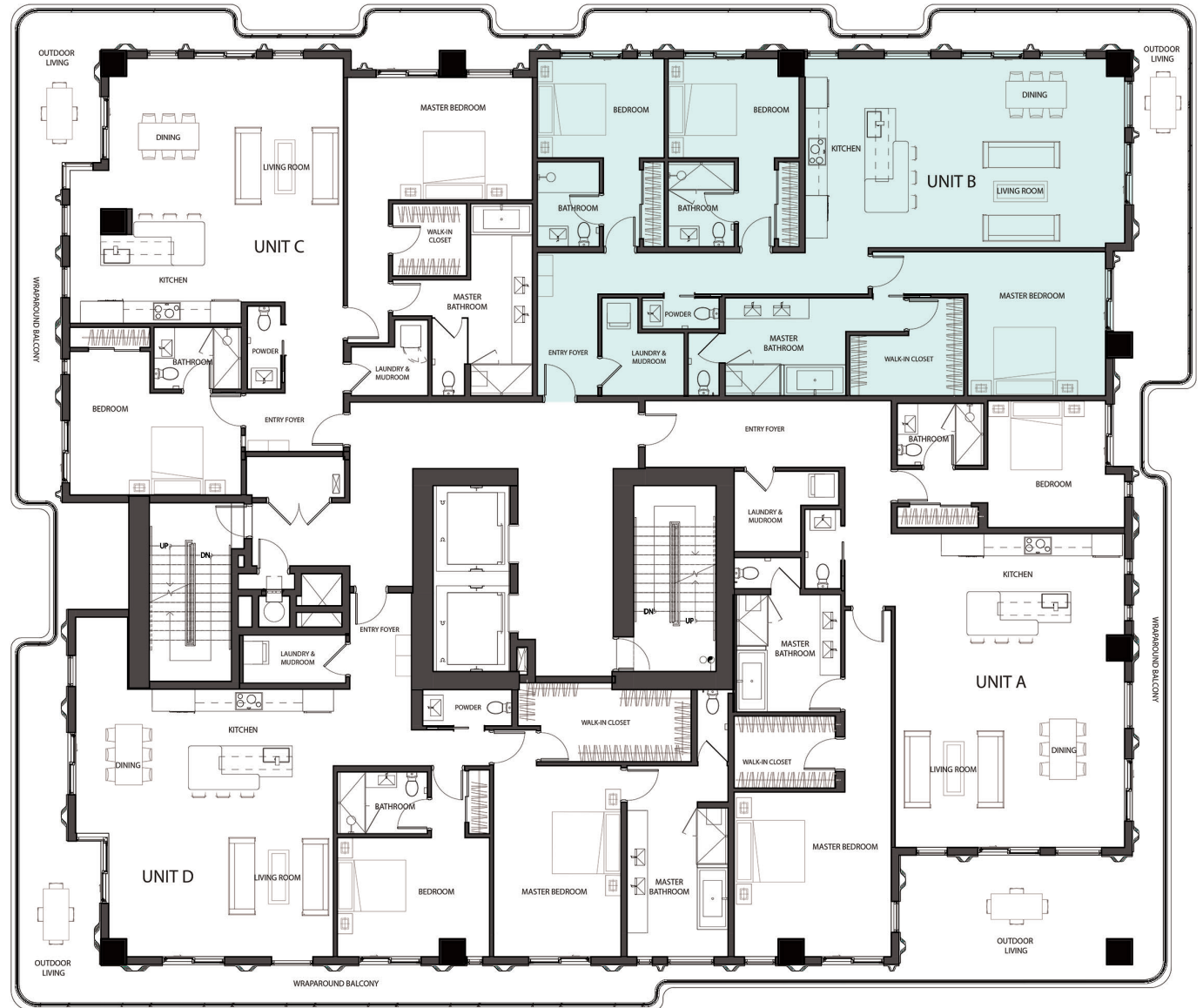
1951 Sq. Ft.

Terrace/Balcony Area:

486 Sq. Ft.

Total Area:

2437 Sq. Ft.



# 7918

BY PACIFIC & ORIENT PROPERTIES, LLC

## LEVEL 17

### RESIDENCE 1703 UNIT C

2 Bedrooms

2.5 Bathrooms

**Interior Area:**

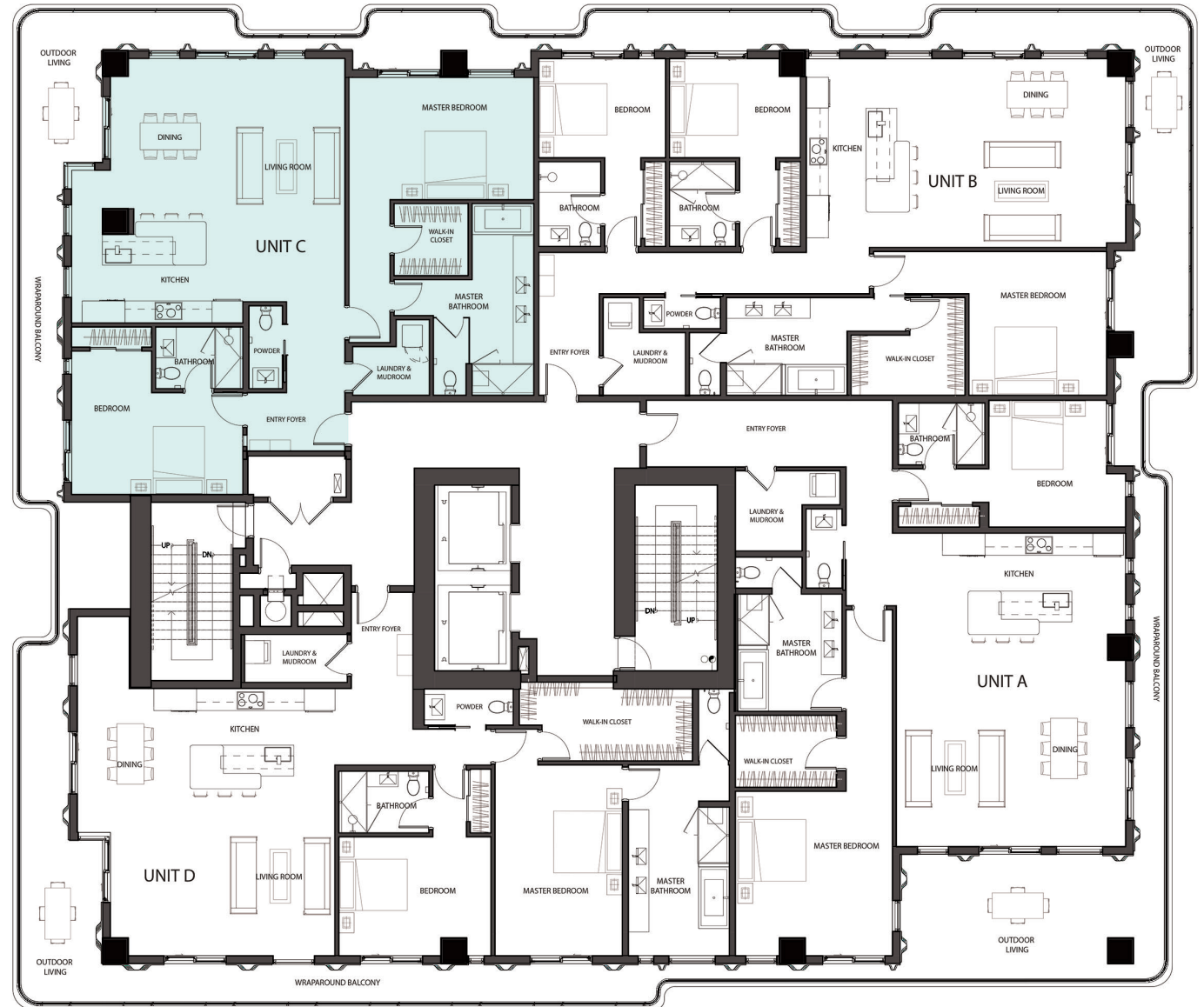
1728 Sq. Ft.

**Terrace/Balcony Area:**

561 Sq. Ft.

**Total Area:**

2289 Sq. Ft.



# 7918

BY PACIFIC & ORIENT PROPERTIES, LLC

## LEVEL 17

### RESIDENCE 1704 UNIT D

2 Bedrooms

2.5 Bathrooms

**Interior Area:**

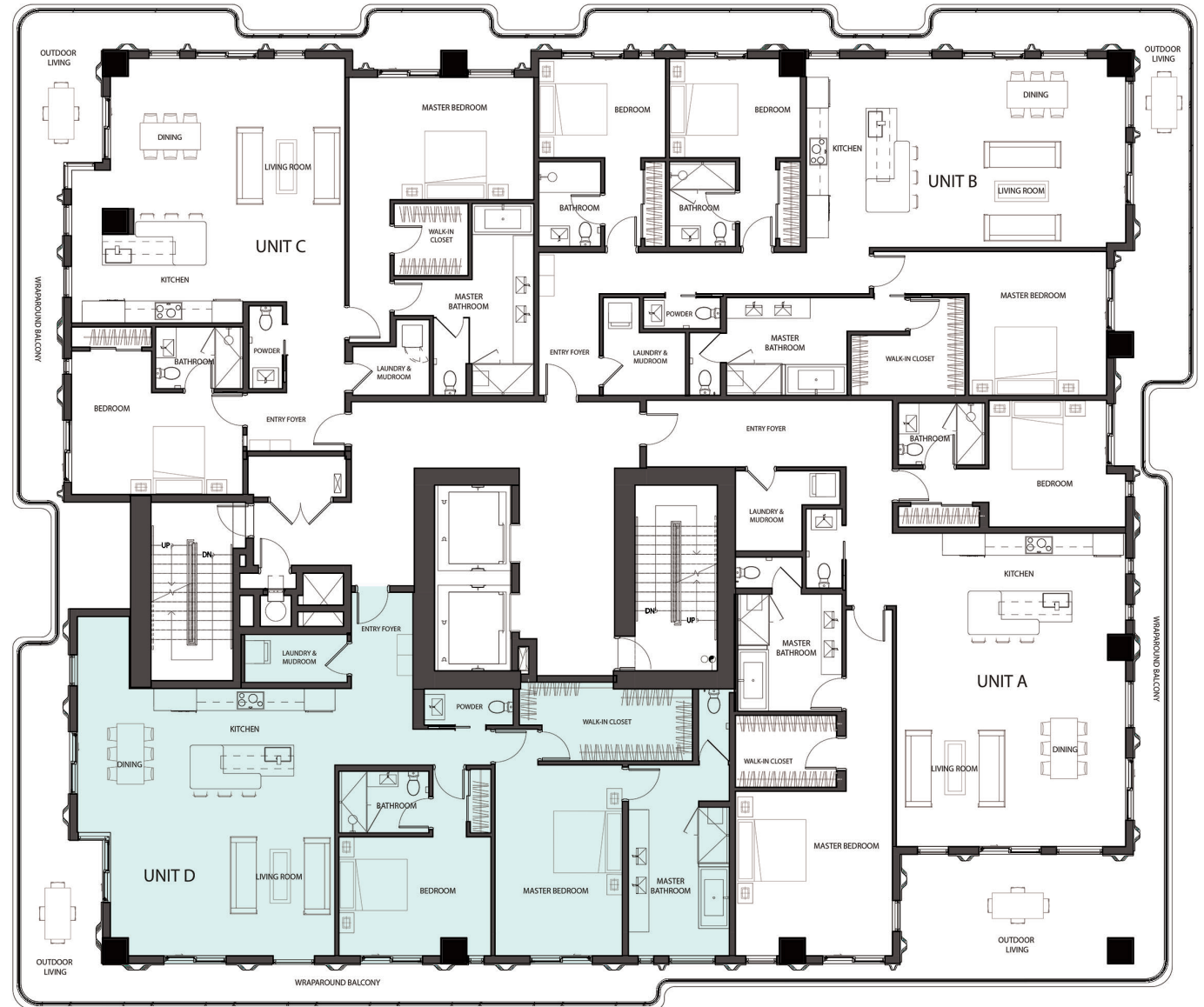
1917 Sq. Ft.

**Terrace/Balcony Area:**

519 Sq. Ft.

**Total Area:**

2436 Sq. Ft.



# 7918

BY PACIFIC & ORIENT PROPERTIES, LLC

## LEVEL 18

### RESIDENCE 1801 UNIT A

3 Bedrooms

3.5 Bathrooms

Interior Area:

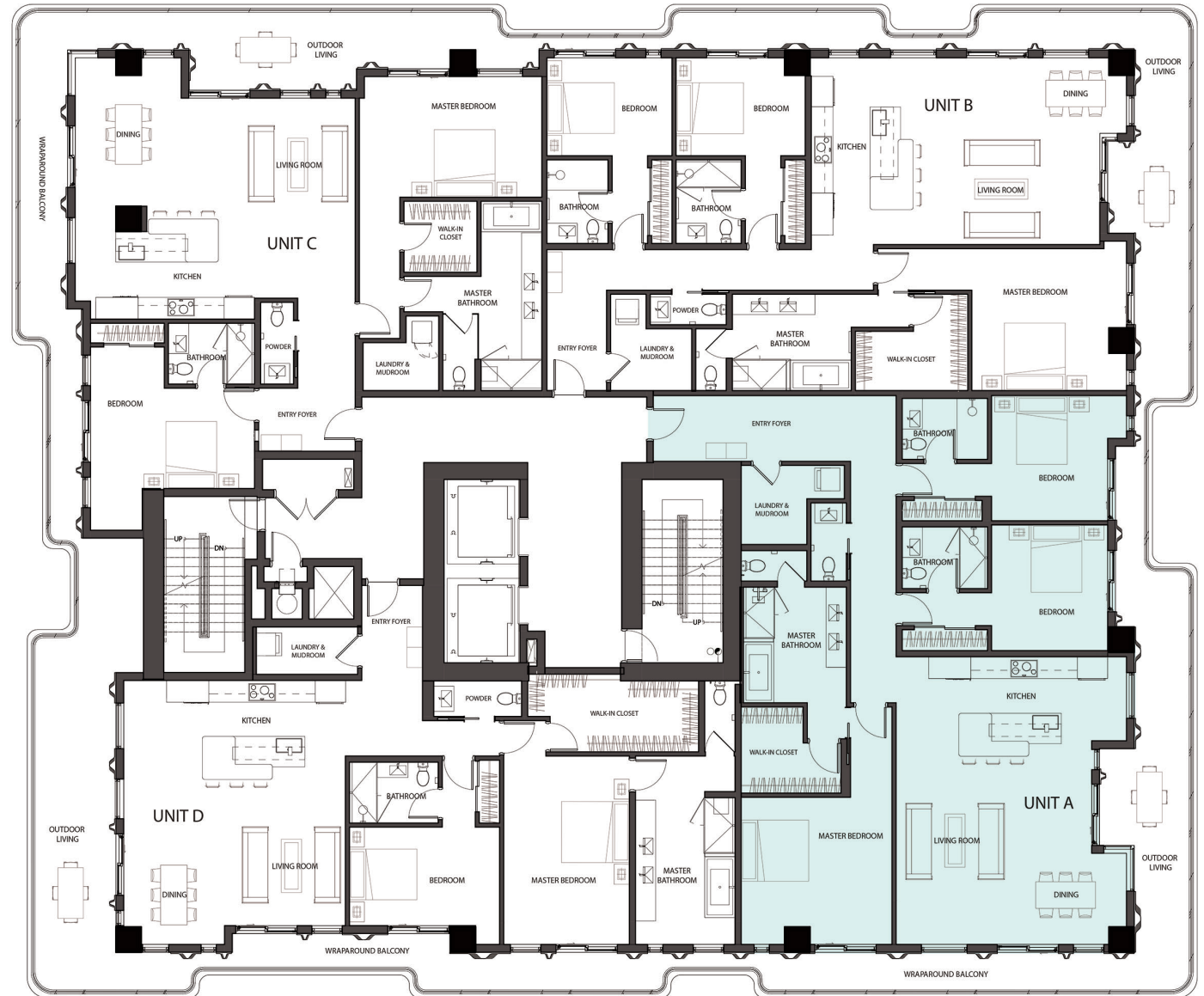
2169 Sq. Ft.

Terrace/Balcony Area:

540 Sq. Ft.

Total Area:

2709 Sq. Ft.



# 7918

BY PACIFIC & ORIENT PROPERTIES, LLC

## LEVEL 18

### RESIDENCE 1802 UNIT B

3 Bedrooms

3.5 Bathrooms

Interior Area:

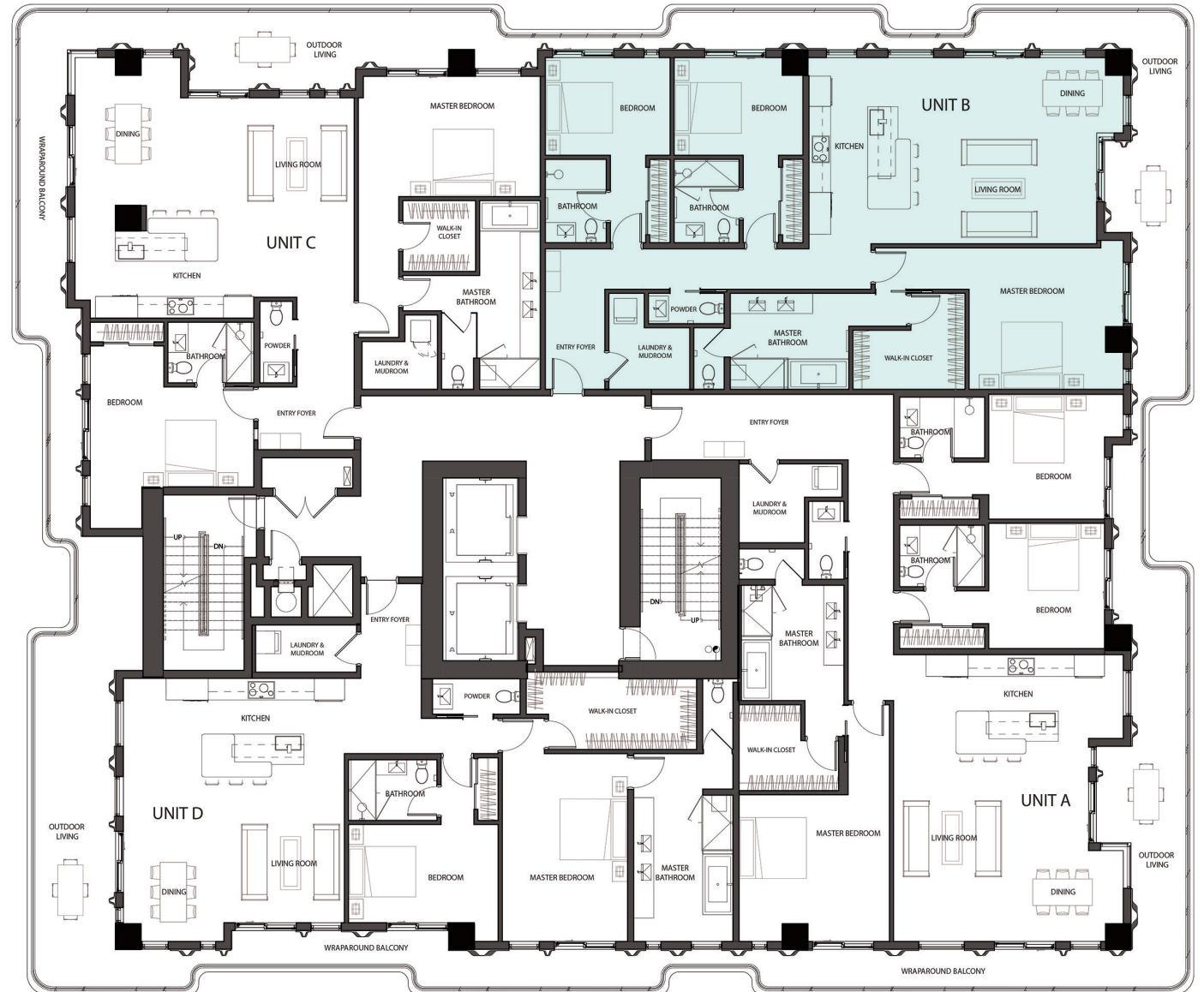
1950 Sq. Ft.

Terrace/Balcony Area:

474 Sq. Ft.

Total Area:

2424 Sq. Ft.



# 7918

BY PACIFIC & ORIENT PROPERTIES, LLC

## LEVEL 18

### RESIDENCE 1803 UNIT C

2 Bedrooms

2.5 Bathrooms

**Interior Area:**

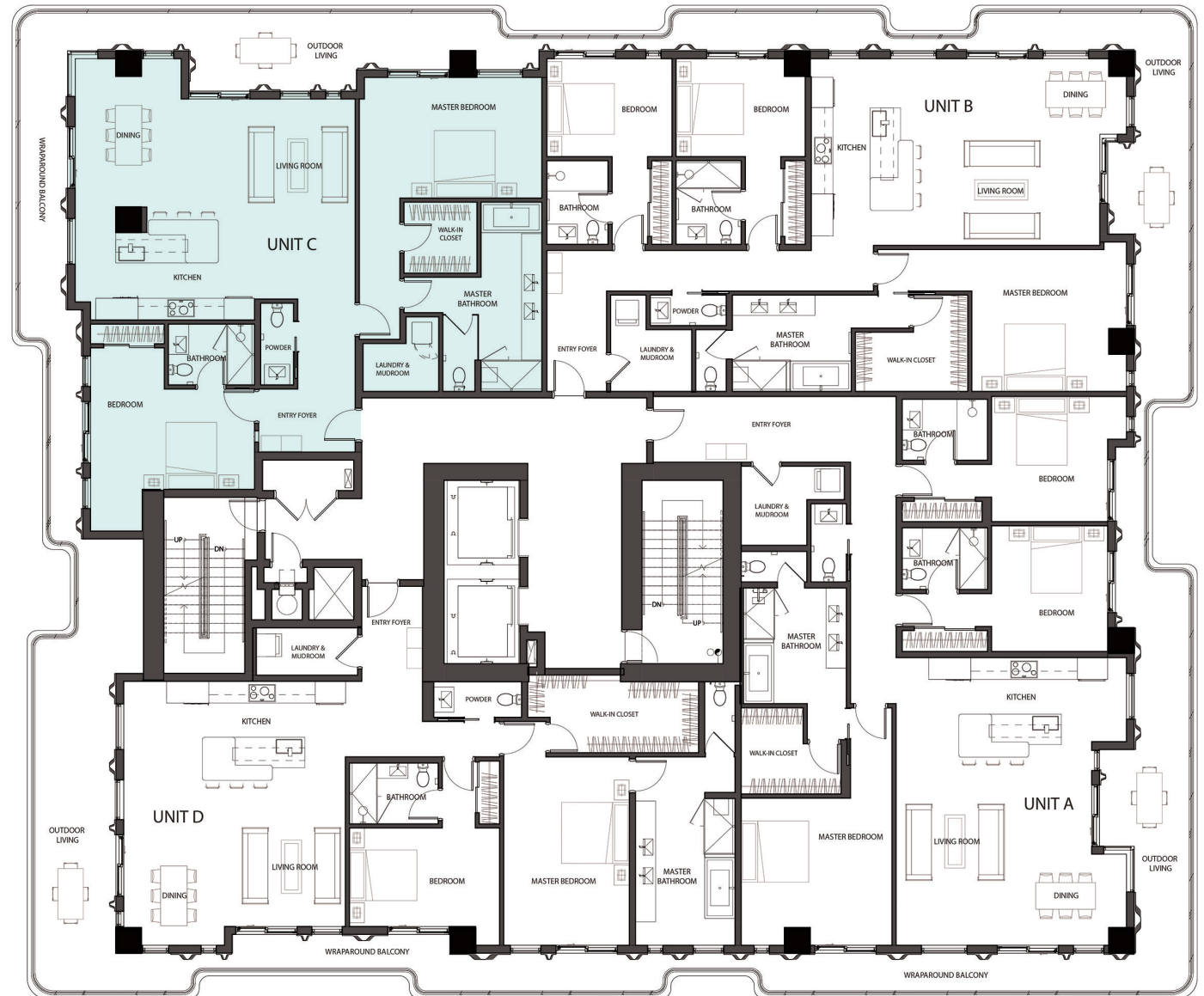
1749 Sq. Ft.

**Terrace/Balcony Area:**

561 Sq. Ft.

**Total Area:**

2310 Sq. Ft.



# 7918

BY PACIFIC & ORIENT PROPERTIES, LLC

## LEVEL 18

### RESIDENCE 1804 UNIT D

2 Bedrooms

2.5 Bathrooms

**Interior Area:**

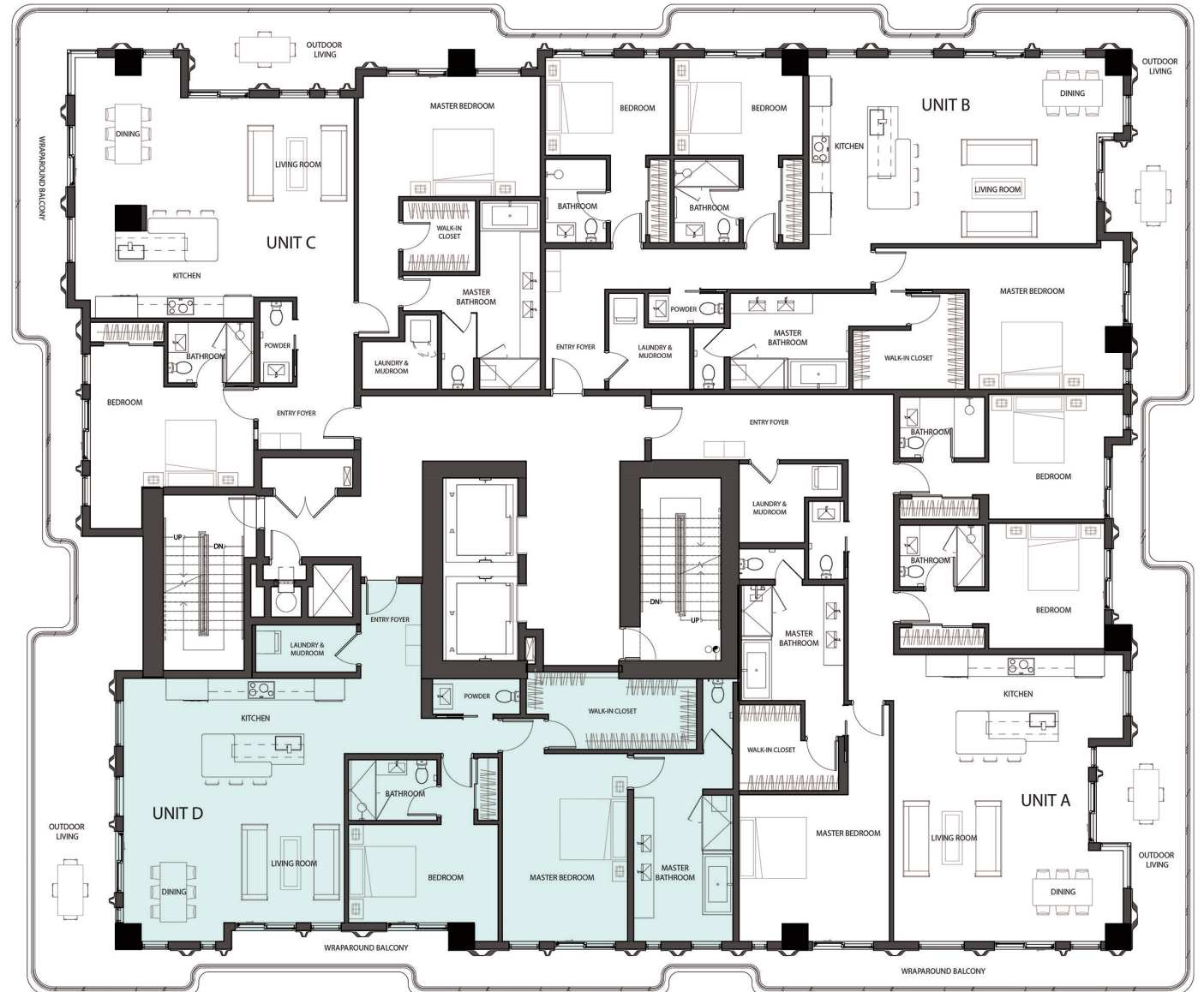
1780 Sq. Ft.

**Terrace/Balcony Area:**

651 Sq. Ft.

**Total Area:**

2431 Sq. Ft.





# 7918

BY PACIFIC & ORIENT PROPERTIES, LLC

## LEVEL 19

### RESIDENCE 1901 UNIT A

3 Bedrooms

3.5 Bathrooms

Interior Area:

2184 Sq. Ft.

Terrace/Balcony Area:

556 Sq. Ft.

Total Area:

2740 Sq. Ft.



# 7918

BY PACIFIC & ORIENT PROPERTIES, LLC

## LEVEL 19

### RESIDENCE 1902 UNIT G

4 Bedrooms

5.5 Bathrooms

Plus Service Quarters

**Interior Area:**

3342 Sq. Ft.

**Terrace/Balcony Area:**

1257 Sq. Ft.

**Total Area:**

4599 Sq. Ft.



# 7918

BY PACIFIC & ORIENT PROPERTIES, LLC

## LEVEL 19

### RESIDENCE 1903 UNIT D

2 Bedrooms

2.5 Bathrooms

**Interior Area:**

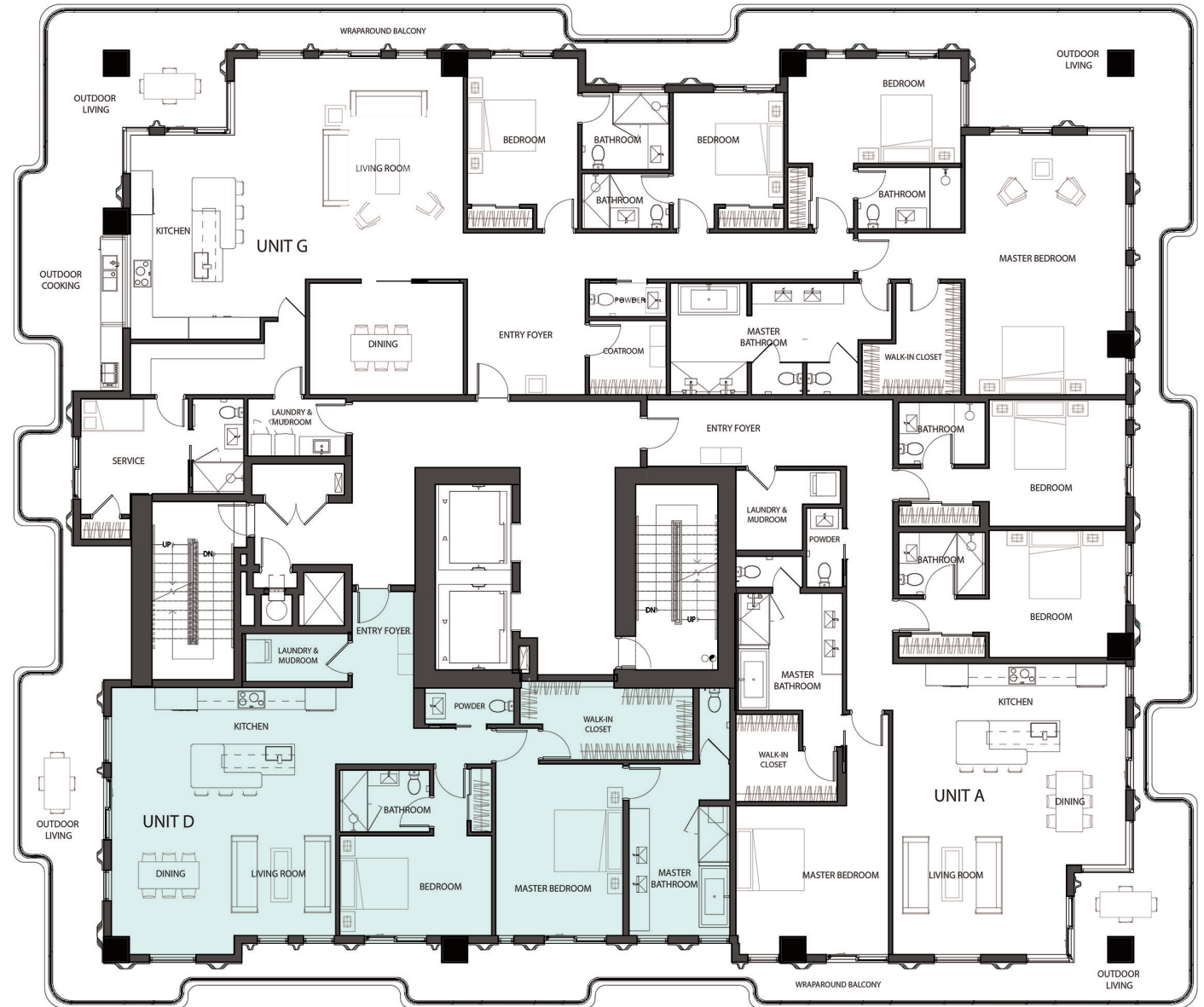
1735 Sq. Ft.

**Terrace/Balcony Area:**

632 Sq. Ft.

**Total Area:**

2367 Sq. Ft.



# 7918

BY PACIFIC & ORIENT PROPERTIES, LLC

**LEVEL 20**

## **RESIDENCE 2001 UNIT H**

5 Bedrooms

6.5 Bathrooms

Plus Service Quarters

**Interior Area:**

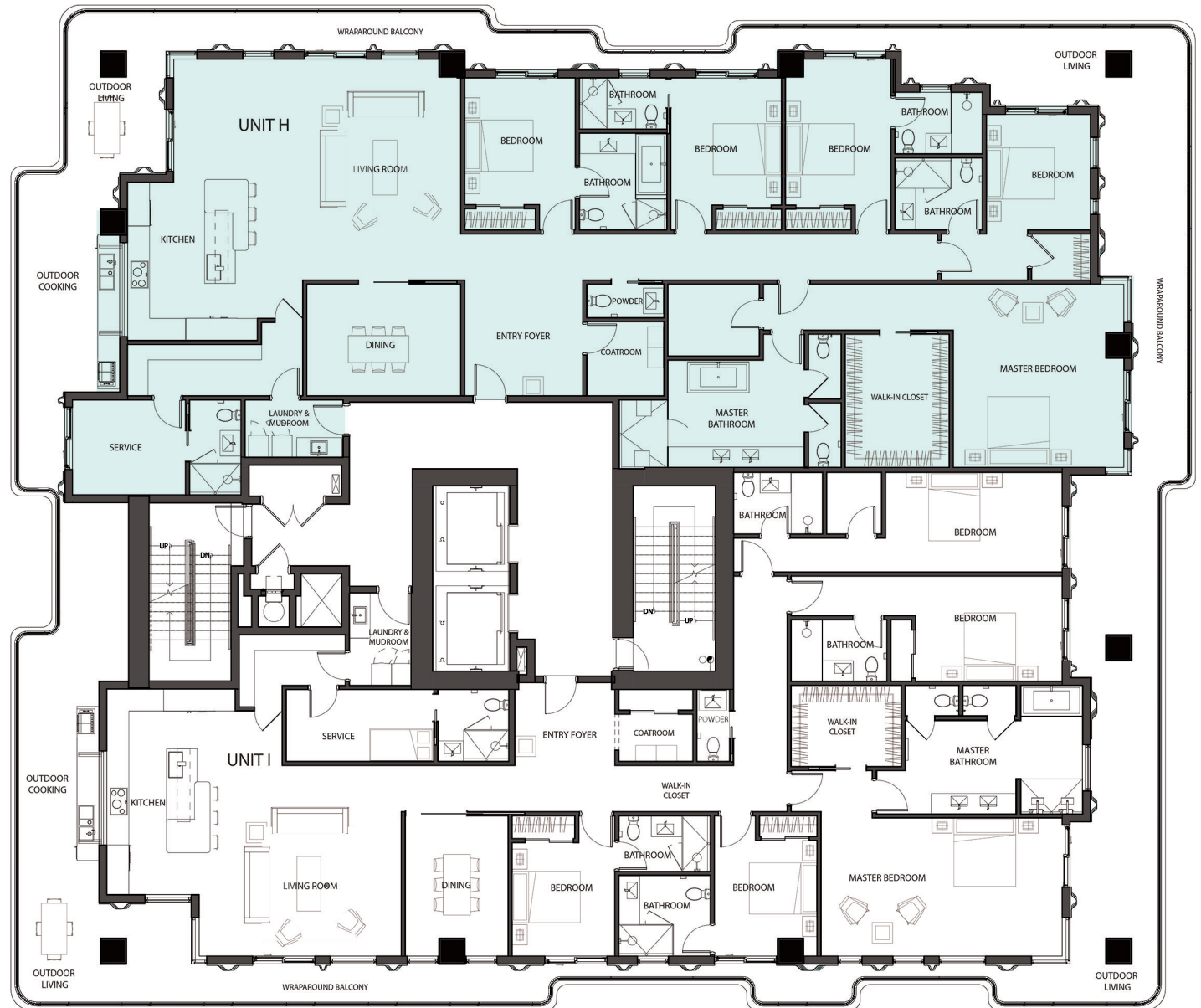
3404 Sq. Ft.

**Terrace/Balcony Area:**

1292 Sq. Ft.

**Total Area:**

4696 Sq. Ft.



# 7918

BY PACIFIC & ORIENT PROPERTIES, LLC

**LEVEL 20**

## **RESIDENCE 2002 UNIT I**

5 Bedrooms

6.5 Bathrooms

Plus Service Quarters

**Interior Area:**

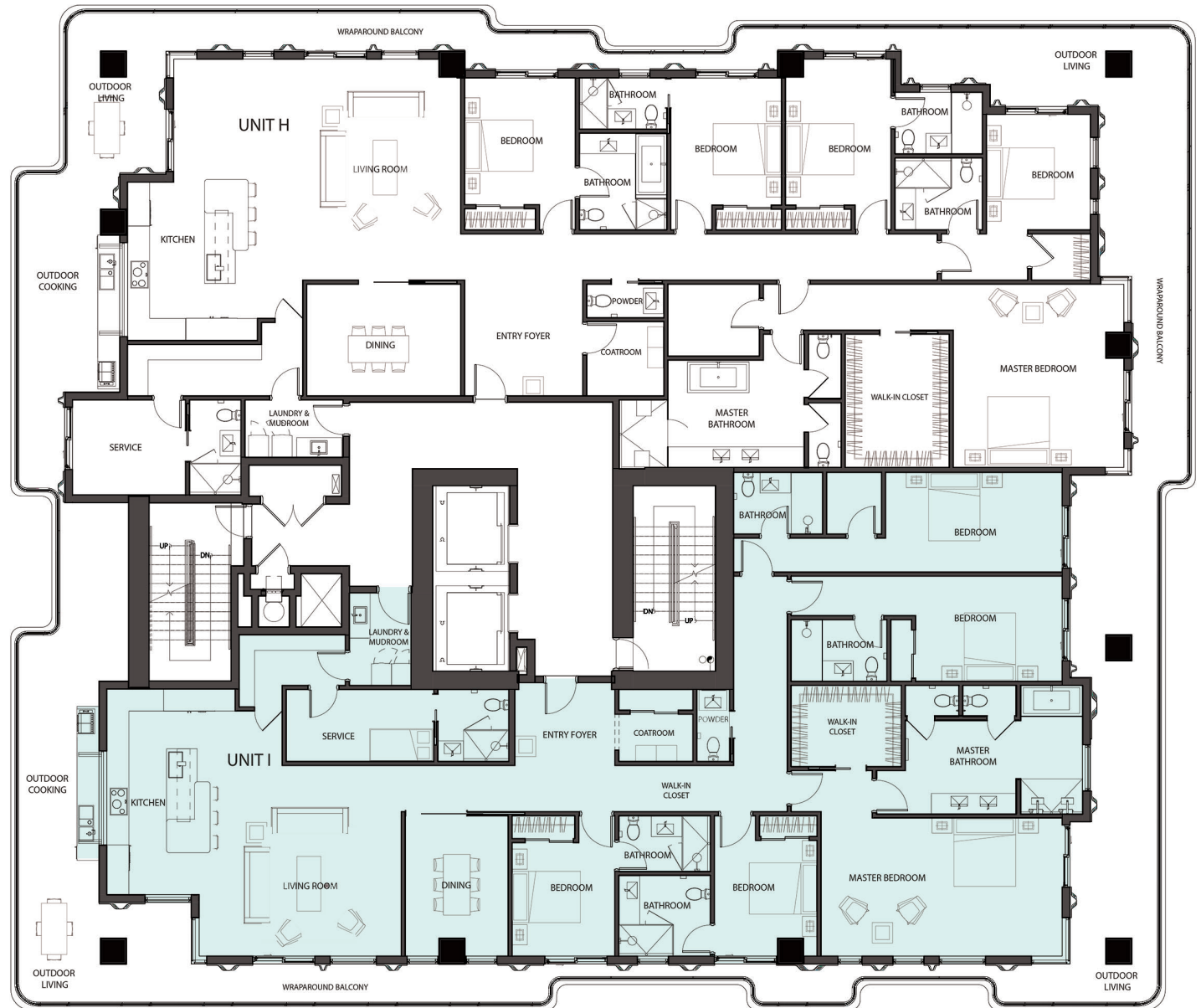
3661 Sq. Ft.

**Terrace/Balcony Area:**

1232 Sq. Ft.

**Total Area:**

4893 Sq. Ft.



# 7918

BY PACIFIC & ORIENT PROPERTIES, LLC

## LEVEL 21

### RESIDENCE PH UNIT J

6 Bedrooms

7.5 Bathrooms

Plus Service Quarters

**Interior Area:**

7086 Sq. Ft.

**Terrace/Balcony Area:**

3252 Sq. Ft.

**Total Area:**

10338 Sq. Ft.

