

# Casa 01

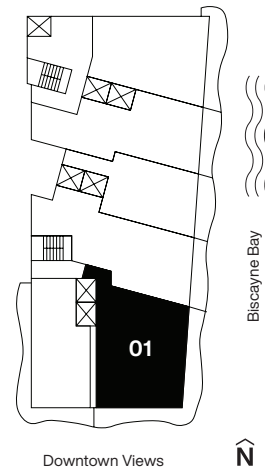
Floors 2 through 46

3 Bedrooms  
3.5 Bathrooms

AC Area  
1,953 sf / 182 m<sup>2</sup>

Outdoor Area  
570 sf / 53 m<sup>2</sup>

Total Area  
2,523 sf / 235 m<sup>2</sup>



# Casa Bella

RESIDENCES

by **B&BITALIA**

The Art of Italian Living Curated by Piero Lissoni

Seth Bloomgarden, REALTOR®, Berkshire Hathaway HomeServices EWM Realty / bloomgarden.s@ewm.com / (917) 364-7575

ORAL REPRESENTATIONS CANNOT BE RELIED UPON AS CORRECTLY STATING REPRESENTATIONS OF THE DEVELOPER. FOR CORRECT REPRESENTATIONS, MAKE REFERENCE TO THE DOCUMENTS REQUIRED BY SECTION 718.503, FLORIDA STATUTES, TO BE FURNISHED BY A DEVELOPER TO A BUYER OR LESSEE. 1400 Biscayne Condominium is developed by PRH 1400 BISCAYNE 1, LLC

The dimensions stated for this unit floor plan are approximate because there are various recognized methods for calculating the square footage of a unit. The square footage stated here is calculated from the exterior boundaries of the exterior walls to the centerline of interior demising walls without deductions for cutouts, curves, or architectural features. This method typically results in quoted dimensions greater than the dimensions that would be determined by using other accepted methods. The definition of "Unit" and the calculation method to be relied upon is set forth in the Developer's Prospectus and the method set forth in the Developer's Prospectus may result in a square footage calculation less than the method used here. The balconies depicted are conceptual and the size will vary based floor level of unit, final permitting and completed construction. The illustrations and images are conceptual and may vary from concept to actual construction. The floor plan, unit layout, locations of windows, doors, closets, plumbing fixtures, mechanical equipment, appliances, structural elements, architectural design elements, and the uses, configurations, and entries to rooms may change based on final approved plans, permitting, and completed construction. The furniture plan and the uses of space illustrated are suggested uses only and not intended to guaranty or represent any specific use of space. Furnishings, design features, fixtures, and décor illustrated are conceptual and are not included with purchase of a Unit. Consult the Developer's Prospectus for information on what is offered with the Unit and the calculation of the Unit square footage and dimensions. The Developer, PRH 1400 BISCAYNE 1, LLC, is a licensee of: The Related Group, B&B Italia, and Piero Lissoni, but none of these licensors is the Developer. © 2021 with all rights reserved PRH 1400 BISCAYNE 1, LLC

# Casa 02

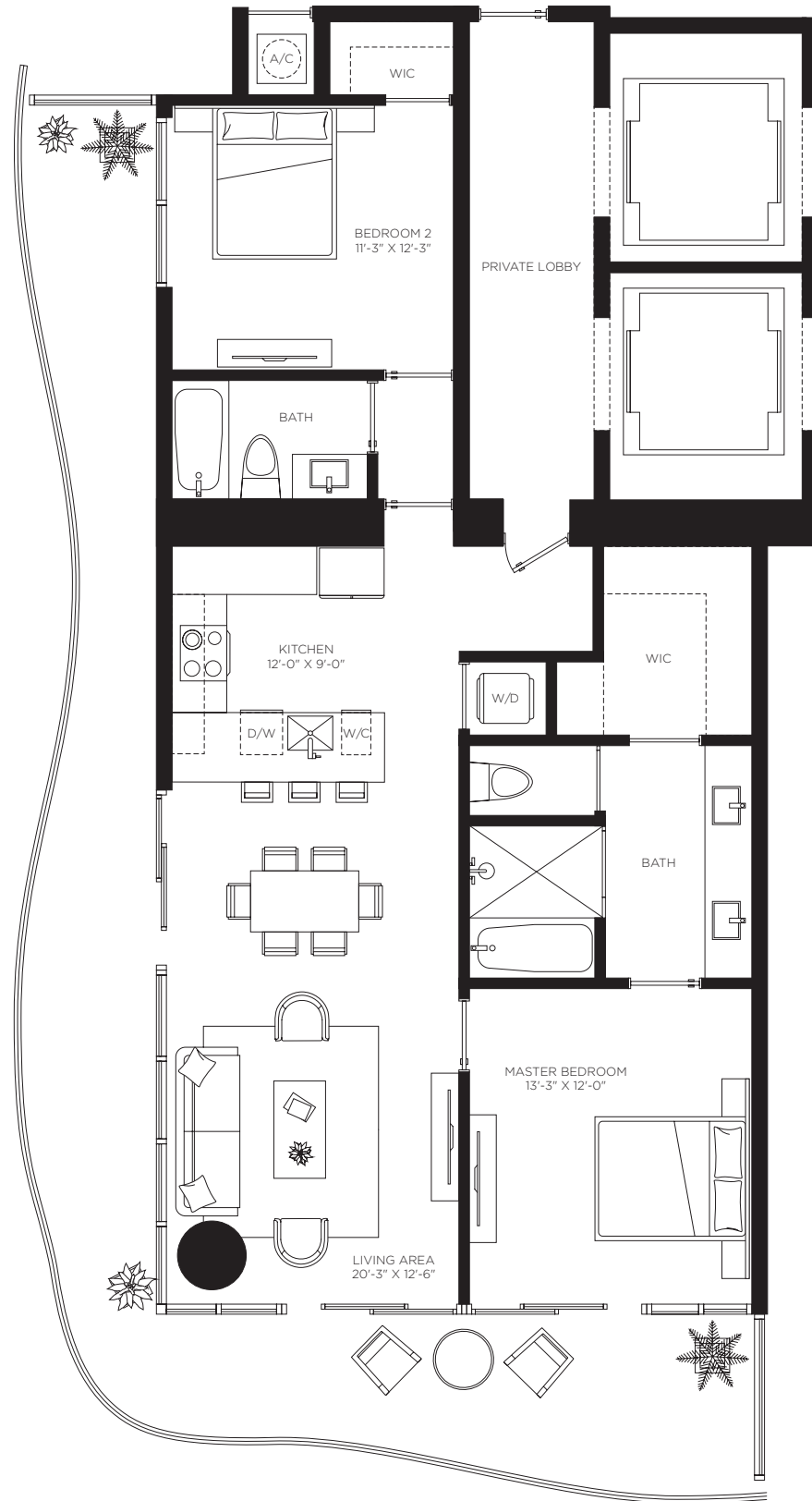
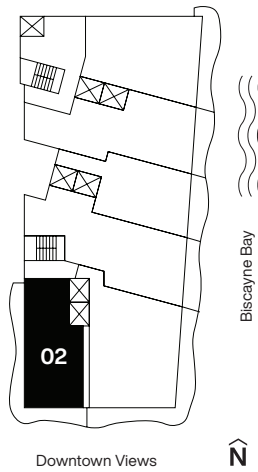
Floors 2 through 46

2 Bedrooms  
2 Bathrooms

AC Area  
1,303 sf / 121 m<sup>2</sup>

Outdoor Area  
464 sf / 43 m<sup>2</sup>

Total Area  
1,767 sf / 164 m<sup>2</sup>



# Casa Bella

RESIDENCES

by **B&BITALIA**

The Art of Italian Living Curated by Piero Lissoni

Seth Bloomgarden, REALTOR®, Berkshire Hathaway HomeServices EWM Realty / bloomgarden.s@ewm.com / (917) 364-7575

ORAL REPRESENTATIONS CANNOT BE RELIED UPON AS CORRECTLY STATING REPRESENTATIONS OF THE DEVELOPER. FOR CORRECT REPRESENTATIONS, MAKE REFERENCE TO THE DOCUMENTS REQUIRED BY SECTION 718.503, FLORIDA STATUTES, TO BE FURNISHED BY A DEVELOPER TO A BUYER OR LESSEE. 1400 Biscayne Condominium is developed by PRH 1400 BISCAYNE 1, LLC

The dimensions stated for this unit floor plan are approximate because there are various recognized methods for calculating the square footage of a unit. The square footage stated here is calculated from the exterior boundaries of the exterior walls to the centerline of interior demising walls without deductions for cutouts, curves, or architectural features. This method typically results in quoted dimensions greater than the dimensions that would be determined by using other accepted methods. The definition of "Unit" and the calculation method to be relied upon is set forth in the Developer's Prospectus and the method set forth in the Developer's Prospectus may result in a square footage calculation less than the method used here. The balconies depicted are conceptual and the size will vary based floor level of unit, final permitting and completed construction. The illustrations and images are conceptual and may vary from concept to actual construction. The floor plan, unit layout, locations of windows, doors, closets, plumbing fixtures, mechanical equipment, appliances, structural elements, architectural design elements, and the uses, configurations, and entries to rooms may change based on final approved plans, permitting, and completed construction. The furniture plan and the uses of space illustrated are suggested uses only and not intended to guaranty or represent any specific use of space. Furnishings, design features, fixtures, and décor illustrated are conceptual and are not included with purchase of a Unit. Consult the Developer's Prospectus for information on what is offered with the Unit and the calculation of the Unit square footage and dimensions. The Developer, PRH 1400 BISCAYNE 1, LLC, is a licensee of: The Related Group, B&B Italia, and Piero Lissoni, but none of these licensors is the Developer. © 2021 with all rights reserved PRH 1400 BISCAYNE 1, LLC

# Casa 03

Floors 2 through 47

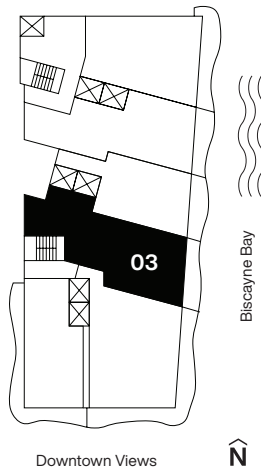
**Casa Bella**  
RESIDENCES  
by **B&BITALIA**  
The Art of Italian Living Curated by Piero Lissoni

**2 Bedrooms**  
**3 Bathrooms**  
**Den**

**AC Area**  
1,819 sf / 169 m<sup>2</sup>

**Outdoor Area**  
199 sf / 18 m<sup>2</sup>

**Total Area**  
2,018 sf / 187 m<sup>2</sup>



**Seth Bloomgarden, REALTOR®, Berkshire Hathaway HomeServices EWM Realty / bloomgarden.s@ewm.com / (917) 364-7575**

ORAL REPRESENTATIONS CANNOT BE RELIED UPON AS CORRECTLY STATING REPRESENTATIONS OF THE DEVELOPER. FOR CORRECT REPRESENTATIONS, MAKE REFERENCE TO THE DOCUMENTS REQUIRED BY SECTION 718.503, FLORIDA STATUTES, TO BE FURNISHED BY A DEVELOPER TO A BUYER OR LESSEE. 1400 Biscayne Condominium is developed by PRH 1400 BISCAYNE 1, LLC

The dimensions stated for this unit floor plan are approximate because there are various recognized methods for calculating the square footage of a unit. The square footage stated here is calculated from the exterior boundaries of the exterior walls to the centerline of interior demising walls without deductions for cutouts, curves, or architectural features. This method typically results in quoted dimensions greater than the dimensions that would be determined by using other accepted methods. The definition of "Unit" and the calculation method to be relied upon is set forth in the Developer's Prospectus and the method set forth in the Developer's Prospectus may result in a square footage calculation less than the method used here. The balconies depicted are conceptual and the size will vary based floor level of unit, final permitting and completed construction. The illustrations and images are conceptual and may vary from concept to actual construction. The floor plan, unit layout, locations of windows, doors, closets, plumbing fixtures, mechanical equipment, appliances, structural elements, architectural design elements, and the uses, configurations, and entries to rooms may change based on final approved plans, permitting, and completed construction. The furniture plan and the uses of space illustrated are suggested uses only and not intended to guaranty or represent any specific use of space. Furnishings, design features, fixtures, and décor illustrated are conceptual and are not included with purchase of a Unit. Consult the Developer's Prospectus for information on what is offered with the Unit and the calculation of the Unit square footage and dimensions. The Developer, PRH 1400 BISCAYNE 1, LLC, is a licensee of: The Related Group, B&B Italia; and Piero Lissoni, but none of these licensors is the Developer. © 2021 with all rights reserved PRH 1400 BISCAYNE 1, LLC

# Casa 04

Floors 2 through 46

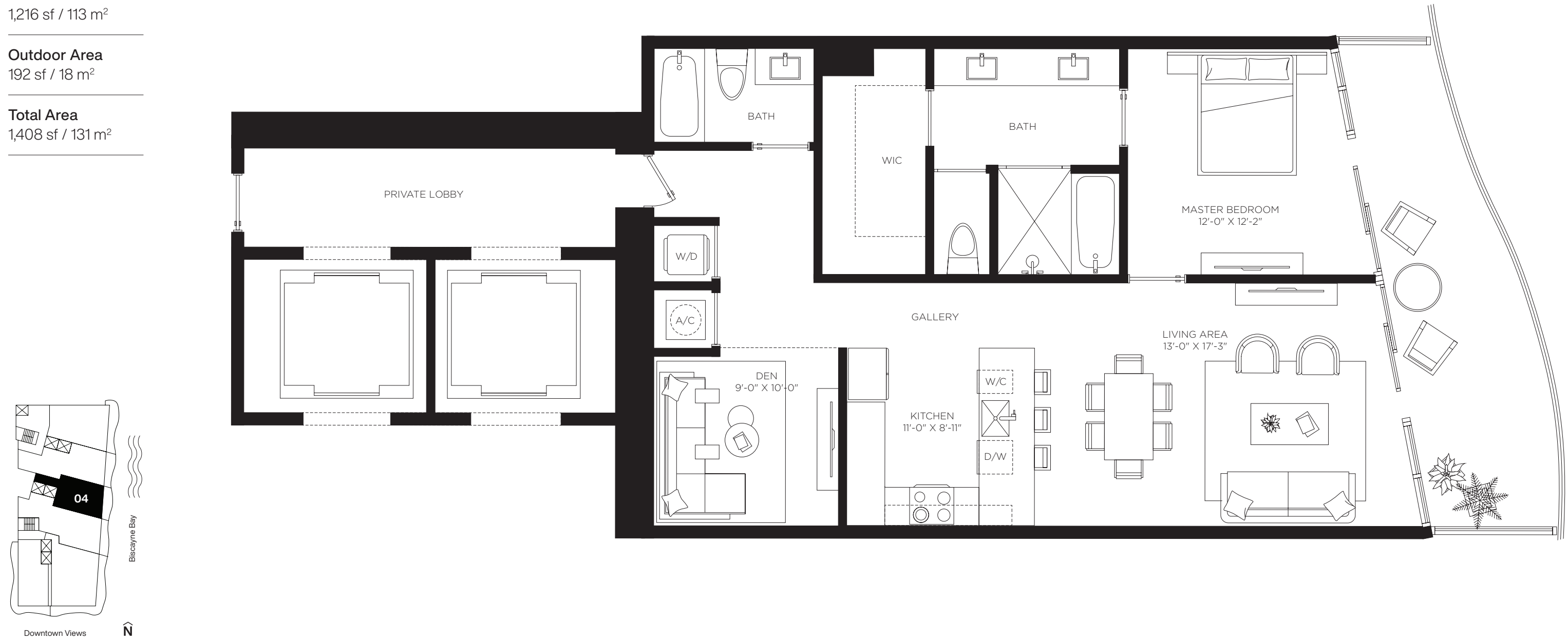
1 Bedroom  
2 Bathrooms  
Den

AC Area  
1,216 sf / 113 m<sup>2</sup>

Outdoor Area  
192 sf / 18 m<sup>2</sup>

Total Area  
1,408 sf / 131 m<sup>2</sup>

**Casa Bella**  
RESIDENCES  
by **B&BITALIA**  
The Art of Italian Living Curated by Piero Lissoni



Seth Bloomgarden, REALTOR®, Berkshire Hathaway HomeServices EWM Realty / bloomgarden.s@ewm.com / (917) 364-7575

ORAL REPRESENTATIONS CANNOT BE RELIED UPON AS CORRECTLY STATING REPRESENTATIONS OF THE DEVELOPER. FOR CORRECT REPRESENTATIONS, MAKE REFERENCE TO THE DOCUMENTS REQUIRED BY SECTION 718.503, FLORIDA STATUTES, TO BE FURNISHED BY A DEVELOPER TO A BUYER OR LESSEE. 1400 Biscayne Condominium is developed by PRH 1400 BISCAYNE 1, LLC

The dimensions stated for this unit floor plan are approximate because there are various recognized methods for calculating the square footage of a unit. The square footage stated here is calculated from the exterior boundaries of the exterior walls to the centerline of interior demising walls without deductions for cutouts, curves, or architectural features. This method typically results in quoted dimensions greater than the dimensions that would be determined by using other accepted methods. The definition of "Unit" and the calculation method to be relied upon is set forth in the Developer's Prospectus and the method set forth in the Developer's Prospectus may result in a square footage calculation less than the method used here. The balconies depicted are conceptual and the size will vary based floor level of unit, final permitting, and completed construction. The illustrations and images are conceptual and may vary from concept to actual construction. The floor plan, unit layout, locations of windows, doors, closets, plumbing fixtures, mechanical equipment, appliances, structural elements, architectural design elements, and the uses, configurations, and entries to rooms may change based on final approved plans, permitting, and completed construction. The furniture plan and the uses of space illustrated are suggested uses only and not intended to guaranty or represent any specific use of space. Furnishings, design features, fixtures, and décor illustrated are conceptual and are not included with purchase of a Unit. Consult the Developer's Prospectus for information on what is offered with the Unit and the calculation of the Unit square footage and dimensions. The Developer, PRH 1400 BISCAYNE 1, LLC, is a licensee of: The Related Group, B&B Italia; and Piero Lissoni, but none of these licensors is the Developer. © 2021 with all rights reserved PRH 1400 BISCAYNE 1, LLC

# Casa 05

Floors 2 through 46

2 Bedrooms  
3 Bathrooms  
Den

AC Area  
1,613 sf / 150 m<sup>2</sup>

Outdoor Area  
189 sf / 18 m<sup>2</sup>

Total Area  
1,802 sf / 168 m<sup>2</sup>

**Casa Bella**  
RESIDENCES  
by **B&BITALIA**  
The Art of Italian Living Curated by Piero Lissoni



**Seth Bloomgarden, REALTOR®, Berkshire Hathaway HomeServices EWM Realty / bloomgarden.s@ewm.com / (917) 364-7575**

ORAL REPRESENTATIONS CANNOT BE RELIED UPON AS CORRECTLY STATING REPRESENTATIONS OF THE DEVELOPER. FOR CORRECT REPRESENTATIONS, MAKE REFERENCE TO THE DOCUMENTS REQUIRED BY SECTION 718.503, FLORIDA STATUTES, TO BE FURNISHED BY A DEVELOPER TO A BUYER OR LESSEE. 1400 Biscayne Condominium is developed by PRH 1400 BISCAYNE 1, LLC

The dimensions stated for this unit floor plan are approximate because there are various recognized methods for calculating the square footage of a unit. The square footage stated here is calculated from the exterior boundaries of the exterior walls to the centerline of interior demising walls without deductions for cutouts, curves, or architectural features. This method typically results in quoted dimensions greater than the dimensions that would be determined by using other accepted methods. The definition of "Unit" and the calculation method to be relied upon is set forth in the Developer's Prospectus and the method set forth in the Developer's Prospectus may result in a square footage calculation less than the method used here. The balconies depicted are conceptual and the size will vary based floor level of unit, final permitting and completed construction. The illustrations and images are conceptual and may vary from concept to actual construction. The floor plan, unit layout, locations of windows, doors, closets, plumbing fixtures, mechanical equipment, appliances, structural elements, architectural design elements, and the uses, configurations, and entries to rooms may change based on final approved plans, permitting, and completed construction. The furniture plan and the uses of space illustrated are suggested uses only and not intended to guaranty or represent any specific use of space. Furnishings, design features, fixtures, and décor illustrated are conceptual and are not included with purchase of a Unit. Consult the Developer's Prospectus for information on what is offered with the Unit and the calculation of the Unit square footage and dimensions. The Developer, PRH 1400 BISCAYNE 1, LLC, is a licensee of: The Related Group, B&B Italia; and Piero Lissoni, but none of these licensors is the Developer. © 2021 with all rights reserved PRH 1400 BISCAYNE 1, LLC

# Casa 06

Floors 23 through 47

# Casa Bella

RESIDENCES

by **B&BITALIA**

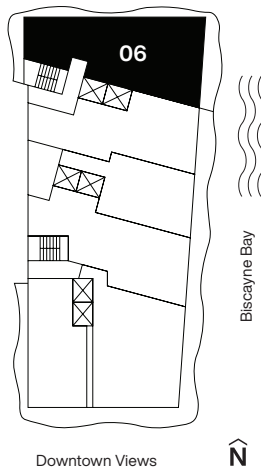
The Art of Italian Living Curated by Piero Lissoni

4 Bedrooms  
4 Bathrooms  
Den

AC Area  
2,187 sf / 203 m<sup>2</sup>

Outdoor Area  
722 sf / 67 m<sup>2</sup>

Total Area  
2,909 sf / 270 m<sup>2</sup>



Seth Bloomgarden, REALTOR®, Berkshire Hathaway HomeServices EWM Realty / bloomgarden.s@ewm.com / (917) 364-7575

ORAL REPRESENTATIONS CANNOT BE RELIED UPON AS CORRECTLY STATING REPRESENTATIONS OF THE DEVELOPER. FOR CORRECT REPRESENTATIONS, MAKE REFERENCE TO THE DOCUMENTS REQUIRED BY SECTION 718.503, FLORIDA STATUTES, TO BE FURNISHED BY A DEVELOPER TO A BUYER OR LESSEE. 1400 Biscayne Condominium is developed by PRH 1400 BISCAYNE 1, LLC

The dimensions stated for this unit floor plan are approximate because there are various recognized methods for calculating the square footage of a unit. The square footage stated here is calculated from the exterior boundaries of the exterior walls to the centerline of interior demising walls without deductions for cutouts, curves, or architectural features. This method typically results in quoted dimensions greater than the dimensions that would be determined by using other accepted methods. The definition of "Unit" and the calculation method to be relied upon is set forth in the Developer's Prospectus and the method set forth in the Developer's Prospectus may result in a square footage calculation less than the method used here. The balconies depicted are conceptual and the size will vary based floor level of unit, final permitting and completed construction. The illustrations and images are conceptual and may vary from concept to actual construction. The floor plan, unit layout, locations of windows, doors, closets, plumbing fixtures, mechanical equipment, appliances, structural elements, architectural design elements, and the uses, configurations, and entries to rooms may change based on final approved plans, permitting, and completed construction. The furniture plan and the uses of space illustrated are suggested uses only and not intended to guaranty or represent any specific use of space. Furnishings, design features, fixtures, and décor illustrated are conceptual and are not included with purchase of a Unit. Consult the Developer's Prospectus for information on what is offered with the Unit and the calculation of the Unit square footage and dimensions. The Developer, PRH 1400 BISCAYNE 1, LLC, is a licensee of: The Related Group, B&B Italia; and Piero Lissoni, but none of these licensors is the Developer. © 2021 with all rights reserved PRH 1400 BISCAYNE 1, LLC



# Casa 06MOD

Floors 12 through 22

2 Bedrooms  
2 Bathrooms

AC Area  
1,326 sf / 123 m<sup>2</sup>

Outdoor Area  
449 sf / 42 m<sup>2</sup>

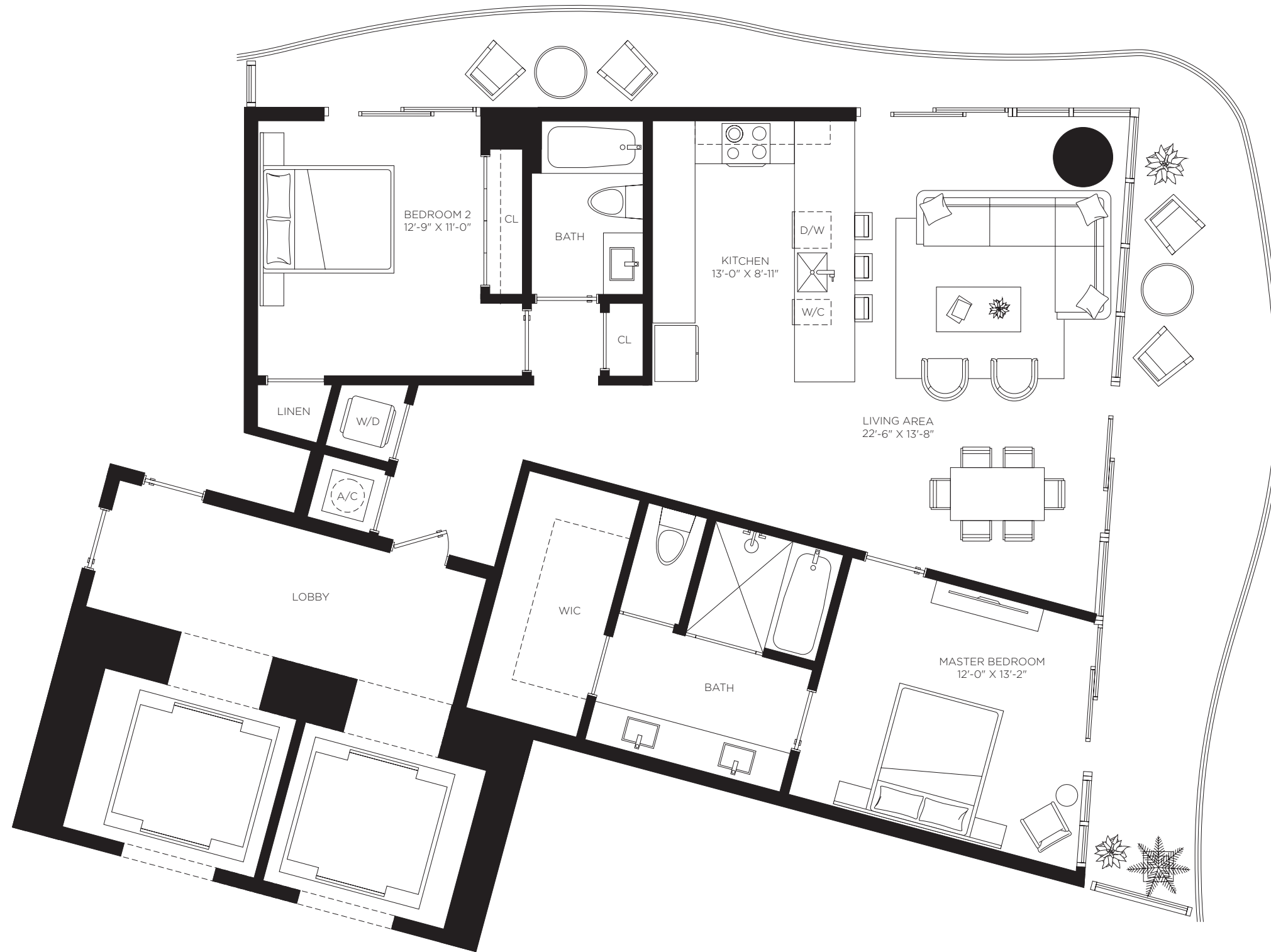
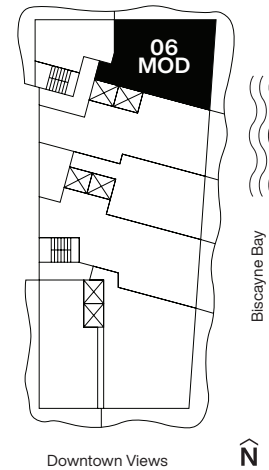
Total Area  
1,775 sf / 165 m<sup>2</sup>

# Casa Bella

RESIDENCES

by **B&BITALIA**

The Art of Italian Living Curated by Piero Lissoni



Seth Bloomgarden, REALTOR®, Berkshire Hathaway HomeServices EWM Realty / bloomgarden.s@ewm.com / (917) 364-7575

ORAL REPRESENTATIONS CANNOT BE RELIED UPON AS CORRECTLY STATING REPRESENTATIONS OF THE DEVELOPER. FOR CORRECT REPRESENTATIONS, MAKE REFERENCE TO THE DOCUMENTS REQUIRED BY SECTION 718.503, FLORIDA STATUTES, TO BE FURNISHED BY A DEVELOPER TO A BUYER OR LESSEE. 1400 Biscayne Condominium is developed by PRH 1400 BISCAYNE 1, LLC

The dimensions stated for this unit floor plan are approximate because there are various recognized methods for calculating the square footage of a unit. The square footage stated here is calculated from the exterior boundaries of the exterior walls to the centerline of interior demising walls without deductions for cutouts, curves, or architectural features. This method typically results in quoted dimensions greater than the dimensions that would be determined by using other accepted methods. The definition of "Unit" and the calculation method to be relied upon is set forth in the Developer's Prospectus and the method set forth in the Developer's Prospectus may result in a square footage calculation less than the method used here. The balconies depicted are conceptual and the size will vary based floor level of unit, final permitting and completed construction. The illustrations and images are conceptual and may vary from concept to actual construction. The floor plan, unit layout, locations of windows, doors, closets, plumbing fixtures, mechanical equipment, appliances, structural elements, architectural design elements, and the uses, configurations, and entries to rooms may change based on final approved plans, permitting, and completed construction. The furniture plan and the uses of space illustrated are suggested uses only and not intended to guaranty or represent any specific use of space. Furnishings, design features, fixtures, and décor illustrated are conceptual and are not included with purchase of a Unit. Consult the Developer's Prospectus for information on what is offered with the Unit and the calculation of the Unit square footage and dimensions. The Developer, PRH 1400 BISCAYNE 1, LLC, is a licensee of: The Related Group, B&B Italia, and Piero Lissoni, but none of these licensors is the Developer. © 2021 with all rights reserved PRH 1400 BISCAYNE 1, LLC

# Casa 06MOD2

Floors 2 through 9

1 Bedroom  
2 Bathrooms  
Den

AC Area  
1,595 sf / 148 m<sup>2</sup>

Outdoor Area  
290 sf / 27 m<sup>2</sup>

Total Area  
1,885 sf / 175 m<sup>2</sup>

# Casa Bella

RESIDENCES

by **B&BITALIA**

The Art of Italian Living Curated by Piero Lissoni



**Seth Bloomgarden, REALTOR®, Berkshire Hathaway HomeServices EWM Realty / bloomgarden.s@ewm.com / (917) 364-7575**

ORAL REPRESENTATIONS CANNOT BE RELIED UPON AS CORRECTLY STATING REPRESENTATIONS OF THE DEVELOPER. FOR CORRECT REPRESENTATIONS, MAKE REFERENCE TO THE DOCUMENTS REQUIRED BY SECTION 718.503, FLORIDA STATUTES, TO BE FURNISHED BY A DEVELOPER TO A BUYER OR LESSEE. 1400 Biscayne Condominium is developed by PRH 1400 BISCAYNE 1, LLC

The dimensions stated for this unit floor plan are approximate because there are various recognized methods for calculating the square footage of a unit. The square footage stated here is calculated from the exterior boundaries of the exterior walls to the centerline of interior demising walls without deductions for cutouts, curves, or architectural features. This method typically results in quoted dimensions greater than the dimensions that would be determined by using other accepted methods. The definition of "Unit" and the calculation method to be relied upon is set forth in the Developer's Prospectus and the method set forth in the Developer's Prospectus may result in a square footage calculation less than the method used here. The balconies depicted are conceptual and the size will vary based floor level of unit, final permitting and completed construction. The illustrations and images are conceptual and may vary from concept to actual construction. The floor plan, unit layout, locations of windows, doors, closets, plumbing fixtures, mechanical equipment, appliances, structural elements, architectural design elements, and the uses, configurations, and entries to rooms may change based on final approved plans, permitting, and completed construction. The furniture plan and the uses of space illustrated are suggested uses only and not intended to guaranty or represent any specific use of space. Furnishings, design features, fixtures, and décor illustrated are conceptual and are not included with purchase of a Unit. Consult the Developer's Prospectus for information on what is offered with the Unit and the calculation of the Unit square footage and dimensions. The Developer, PRH 1400 BISCAYNE 1, LLC, is a licensee of: The Related Group, B&B Italia, and Piero Lissoni, but none of these licensors is the Developer. © 2021 with all rights reserved PRH 1400 BISCAYNE 1, LLC



# Casa 07

Floors 12 through 22

1 Bedroom  
1 Bathroom

AC Area  
711 sf / 66 m<sup>2</sup>

Outdoor Area  
281 sf / 26 m<sup>2</sup>

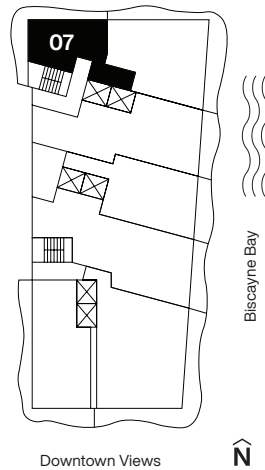
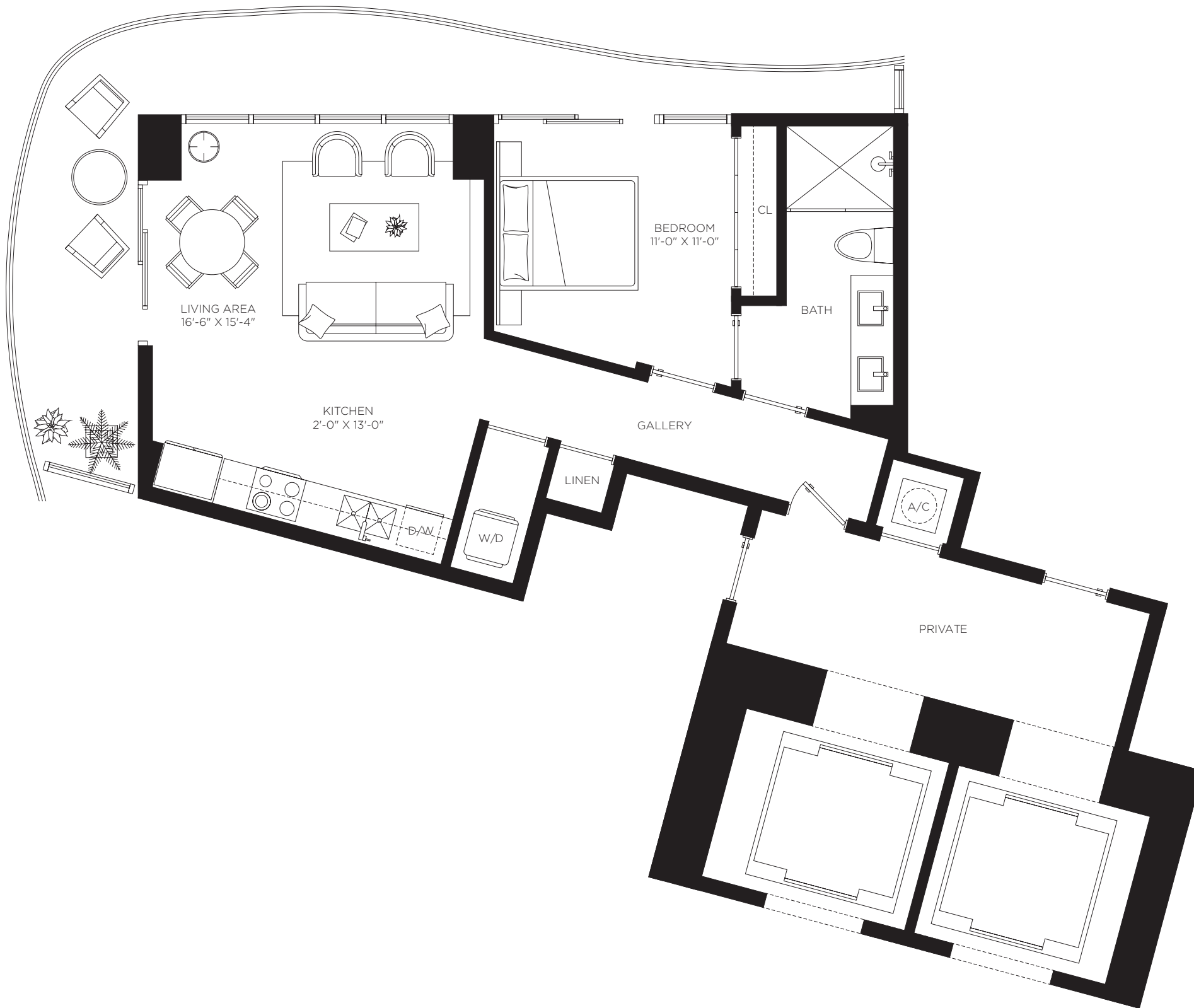
Total Area  
992 sf / 92 m<sup>2</sup>

# Casa Bella

RESIDENCES

by **B&BITALIA**

The Art of Italian Living Curated by Piero Lissoni



Seth Bloomgarden, REALTOR®, Berkshire Hathaway HomeServices EWM Realty / bloomgarden.s@ewm.com / (917) 364-7575

ORAL REPRESENTATIONS CANNOT BE RELIED UPON AS CORRECTLY STATING REPRESENTATIONS OF THE DEVELOPER. FOR CORRECT REPRESENTATIONS, MAKE REFERENCE TO THE DOCUMENTS REQUIRED BY SECTION 718.503, FLORIDA STATUTES, TO BE FURNISHED BY A DEVELOPER TO A BUYER OR LESSEE. 1400 Biscayne Condominium is developed by PRH 1400 BISCAYNE 1, LLC

The dimensions stated for this unit floor plan are approximate because there are various recognized methods for calculating the square footage of a unit. The square footage stated here is calculated from the exterior boundaries of the exterior walls to the centerline of interior demising walls without deductions for cutouts, curves, or architectural features. This method typically results in quoted dimensions greater than the dimensions that would be determined by using other accepted methods. The definition of "Unit" and the calculation method to be relied upon is set forth in the Developer's Prospectus and the method set forth in the Developer's Prospectus may result in a square footage calculation less than the method used here. The balconies depicted are conceptual and the size will vary based floor level of unit, final permitting and completed construction. The illustrations and images are conceptual and may vary from concept to actual construction. The floor plan, unit layout, locations of windows, doors, closets, plumbing fixtures, mechanical equipment, appliances, structural elements, architectural design elements, and the uses, configurations, and entries to rooms may change based on final approved plans, permitting, and completed construction. The floor plan and the uses of space illustrated are suggested uses only and not intended to guaranty or represent any specific use of space. Furnishings, design features, fixtures, and décor illustrated are conceptual and are not included with purchase of a Unit. Consult the Developer's Prospectus for information on what is offered with the Unit and the calculation of the Unit square footage and dimensions. The Developer, PRH 1400 BISCAYNE 1, LLC, is a licensee of: The Related Group, B&B Italia; and Piero Lissoni, but none of these licensors is the Developer. © 2021 with all rights reserved PRH 1400 BISCAYNE 1, LLC

# Casa 08

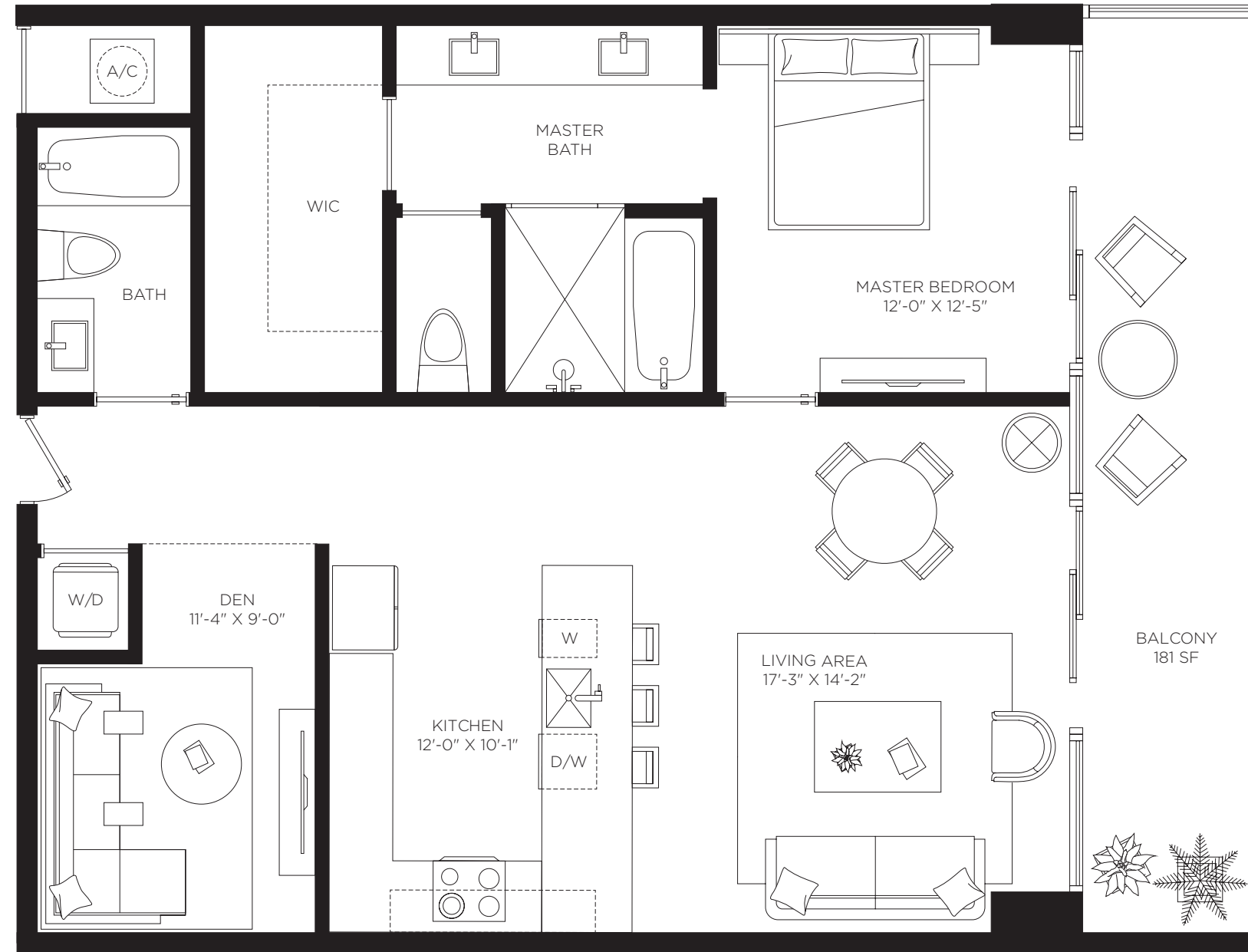
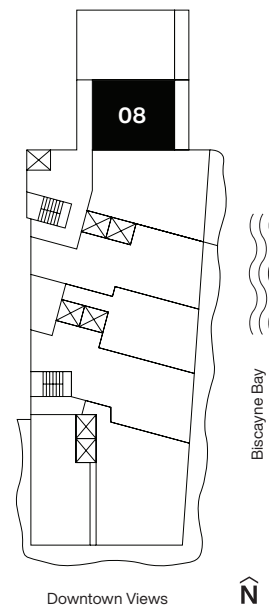
Floors 2 through 8

1 Bedrooms  
2 Bathrooms  
Den

AC Area  
1,060 sf / 98.5 m<sup>2</sup>

Outdoor Area  
181 sf / 17 m<sup>2</sup>

Total Area  
1,241 sf / 115 m<sup>2</sup>



# Casa Bella

RESIDENCES

by **B&BITALIA**

The Art of Italian Living Curated by Piero Lissoni

Seth Bloomgarden, REALTOR®, Berkshire Hathaway HomeServices EWM Realty / bloomgarden.s@ewm.com / (917) 364-7575

ORAL REPRESENTATIONS CANNOT BE RELIED UPON AS CORRECTLY STATING REPRESENTATIONS OF THE DEVELOPER. FOR CORRECT REPRESENTATIONS, MAKE REFERENCE TO THE DOCUMENTS REQUIRED BY SECTION 718.503, FLORIDA STATUTES, TO BE FURNISHED BY A DEVELOPER TO A BUYER OR LESSEE. 1400 Biscayne Condominium is developed by PRH 1400 BISCAYNE 1, LLC

The dimensions stated for this unit floor plan are approximate because there are various recognized methods for calculating the square footage of a unit. The square footage stated here is calculated from the exterior boundaries of the exterior walls to the centerline of interior demising walls without deductions for cutouts, curves, or architectural features. This method typically results in quoted dimensions greater than the dimensions that would be determined by using other accepted methods. The definition of "Unit" and the calculation method to be relied upon is set forth in the Developer's Prospectus and the method set forth in the Developer's Prospectus may result in a square footage calculation less than the method used here. The balconies depicted are conceptual and the size will vary based floor level of unit, final permitting and completed construction. The illustrations and images are conceptual and may vary from concept to actual construction. The floor plan, unit layout, locations of windows, doors, closets, plumbing fixtures, mechanical equipment, appliances, structural elements, architectural design elements, and the uses, configurations, and entries to rooms may change based on final approved plans, permitting, and completed construction. The furniture plan and the uses of space illustrated are suggested uses only and not intended to guaranty or represent any specific use of space. Furnishings, design features, fixtures, and décor illustrated are conceptual and are not included with purchase of a Unit. Consult the Developer's Prospectus for information on what is offered with the Unit and the calculation of the Unit square footage and dimensions. The Developer, PRH 1400 BISCAYNE 1, LLC, is a licensee of: The Related Group, B&B Italia; and Piero Lissoni, but none of these licensors is the Developer. © 2021 with all rights reserved PRH 1400 BISCAYNE 1, LLC

# Casa 08MOD

Floor 9

2 Bedrooms  
2.5 Bathrooms  
Den

AC Area  
1,878 sf / 175 m<sup>2</sup>

Outdoor Area  
181 sf / 17 m<sup>2</sup>

Total Area  
2,059 sf / 191 m<sup>2</sup>

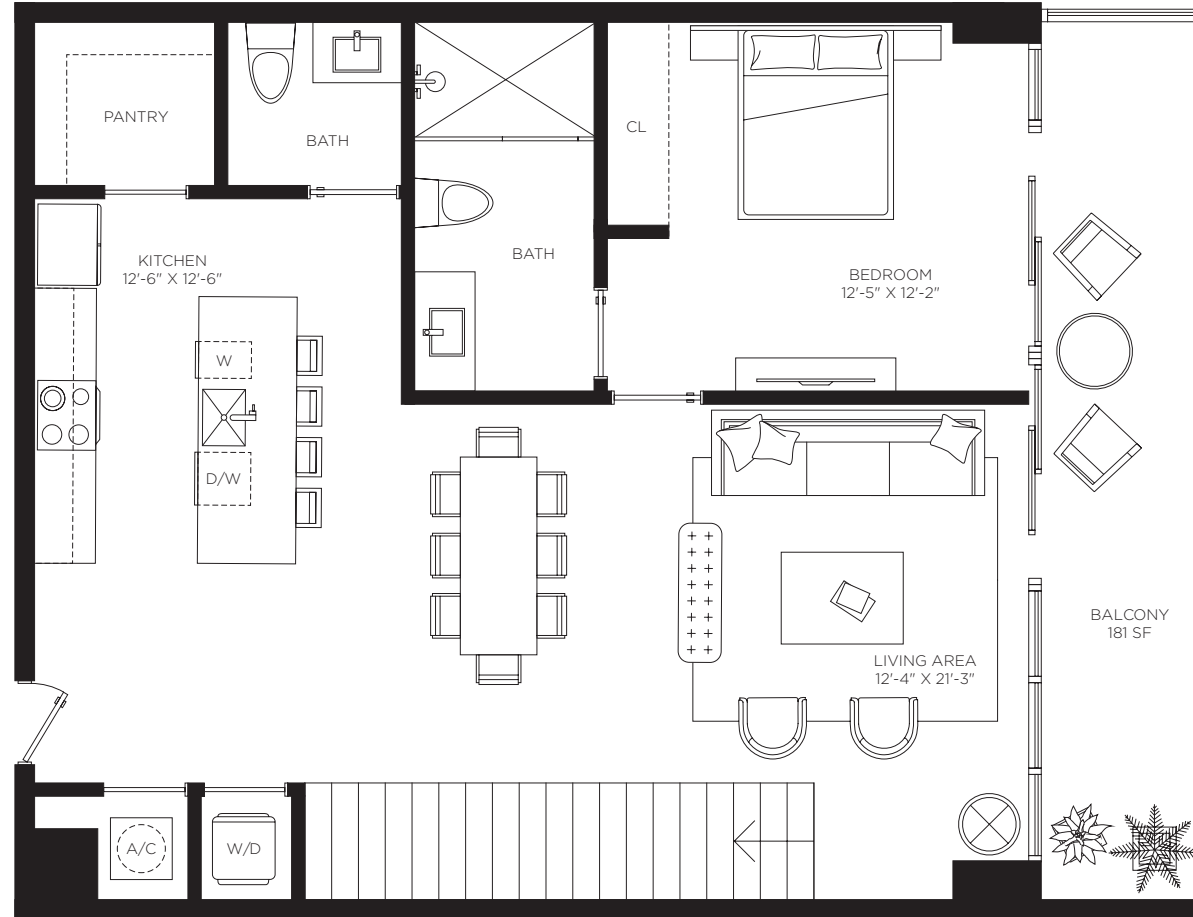
# Casa Bella

RESIDENCES

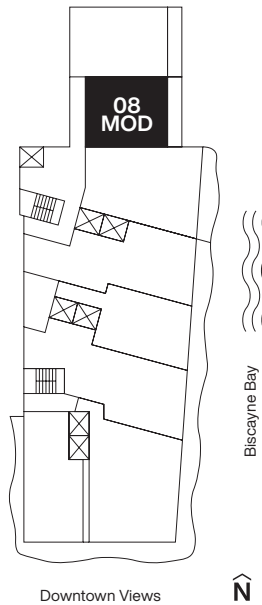
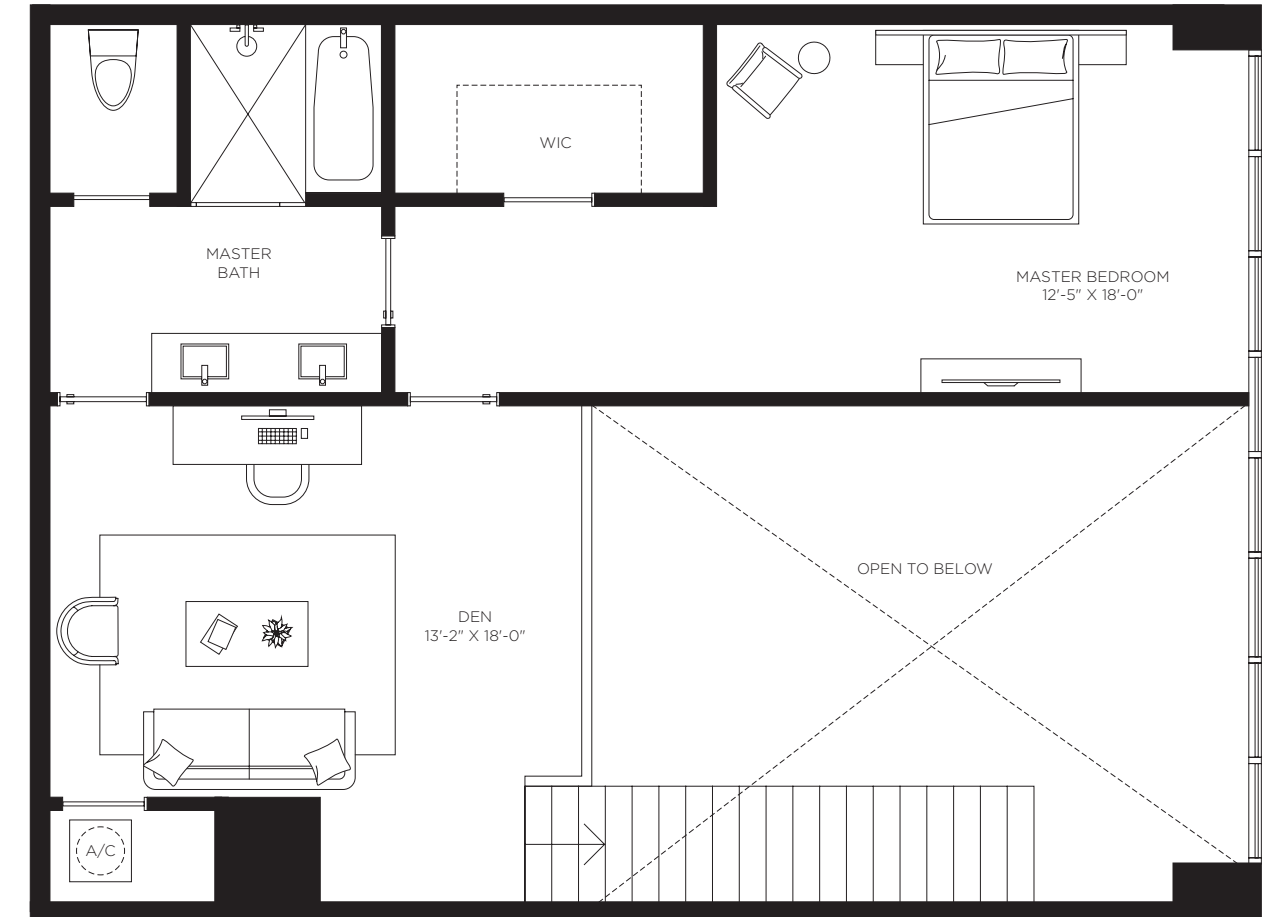
by **B&BITALIA**

The Art of Italian Living Curated by Piero Lissoni

1<sup>st</sup> Floor



2<sup>nd</sup> Floor



Seth Bloomgarden, REALTOR®, Berkshire Hathaway HomeServices EWM Realty / bloomgarden.s@ewm.com / (917) 364-7575

ORAL REPRESENTATIONS CANNOT BE RELIED UPON AS CORRECTLY STATING REPRESENTATIONS OF THE DEVELOPER. FOR CORRECT REPRESENTATIONS, MAKE REFERENCE TO THE DOCUMENTS REQUIRED BY SECTION 718.503, FLORIDA STATUTES, TO BE FURNISHED BY A DEVELOPER TO A BUYER OR LESSEE. 1400 Biscayne Condominium is developed by PRH 1400 BISCAYNE 1, LLC

The dimensions stated for this unit floor plan are approximate because there are various recognized methods for calculating the square footage of a unit. The square footage stated here is calculated from the exterior boundaries of the exterior walls to the centerline of interior demising walls without deductions for cutouts, curves, or architectural features. This method typically results in quoted dimensions greater than the dimensions that would be determined by using other accepted methods. The definition of "Unit" and the calculation method to be relied upon is set forth in the Developer's Prospectus and the method set forth in the Developer's Prospectus may result in a square footage calculation less than the method used here. The balconies depicted are conceptual and the size will vary based floor level of unit, final permitting and completed construction. The illustrations and images are conceptual and may vary from concept to actual construction. The floor plan, unit layout, locations of windows, doors, closets, plumbing fixtures, mechanical equipment, appliances, structural elements, architectural design elements, and the uses, configurations, and entries to rooms may change based on final approved plans, permitting, and completed construction. The furniture plan and the uses of space illustrated are suggested uses only and not intended to guaranty or represent any specific use of space. Furnishings, design features, fixtures, and décor illustrated are conceptual and are not included with purchase of a Unit. Consult the Developer's Prospectus for information on what is offered with the Unit and the calculation of the Unit square footage and dimensions. The Developer, PRH 1400 BISCAYNE 1, LLC, is a licensee of: The Related Group, B&B Italia; and Piero Lissoni, but none of these licensors is the Developer. © 2021 with all rights reserved PRH 1400 BISCAYNE 1, LLC

# Casa 09

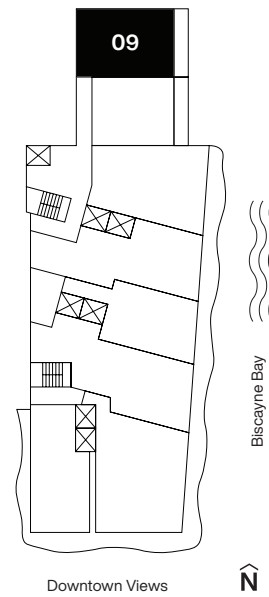
Floors 2 through 8

1 Bedrooms  
2 Bathrooms  
Den

AC Area  
1,190 sf / 111 m<sup>2</sup>

Outdoor Area  
172 sf / 16 m<sup>2</sup>

Total Area  
1,362 sf / 127 m<sup>2</sup>

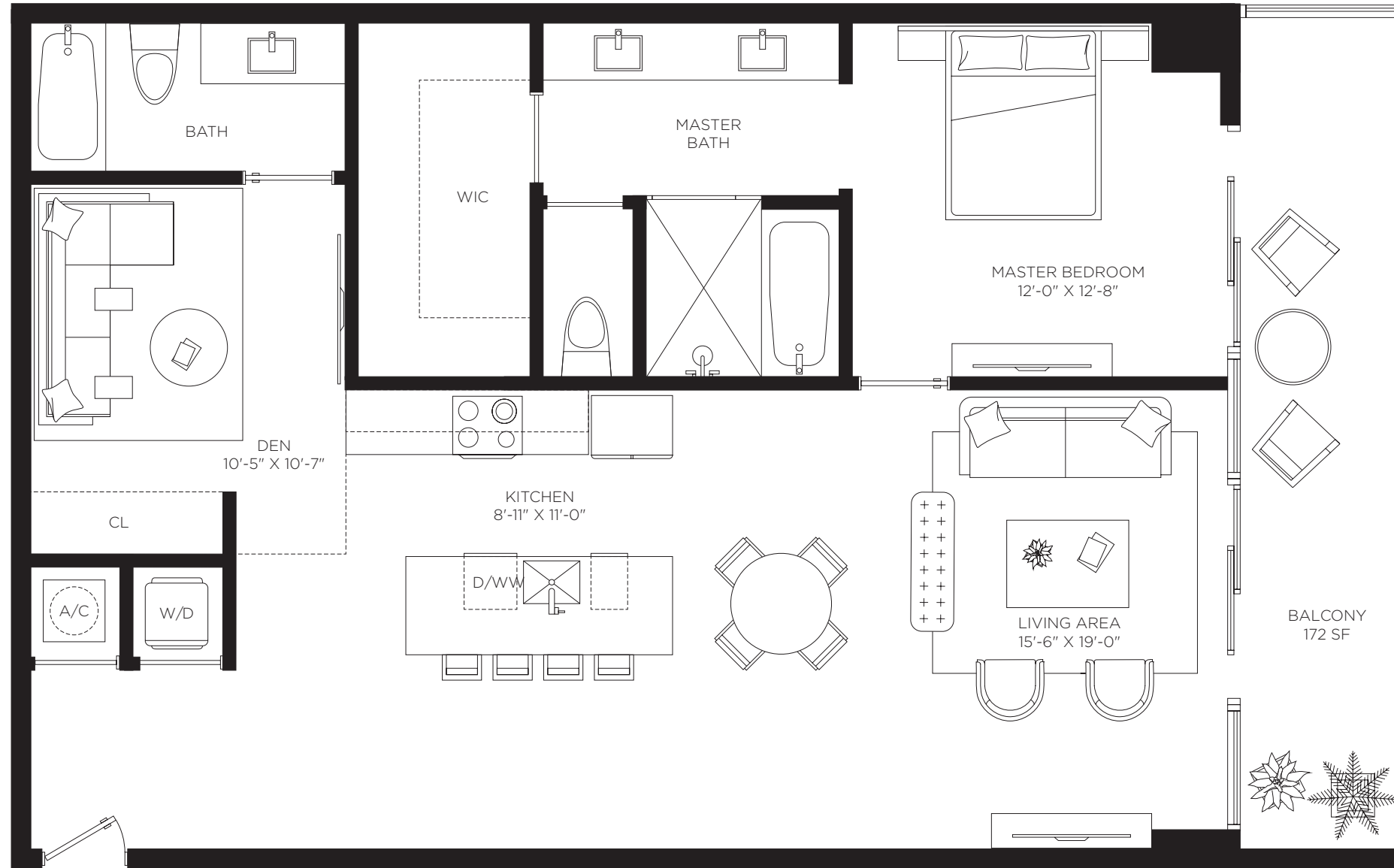


# Casa Bella

RESIDENCES

by **B&BITALIA**

The Art of Italian Living Curated by Piero Lissoni



**Seth Bloomgarden, REALTOR®, Berkshire Hathaway HomeServices EWM Realty / bloomgarden.s@ewm.com / (917) 364-7575**

ORAL REPRESENTATIONS CANNOT BE RELIED UPON AS CORRECTLY STATING REPRESENTATIONS OF THE DEVELOPER. FOR CORRECT REPRESENTATIONS, MAKE REFERENCE TO THE DOCUMENTS REQUIRED BY SECTION 718.503, FLORIDA STATUTES, TO BE FURNISHED BY A DEVELOPER TO A BUYER OR LESSEE. 1400 Biscayne Condominium is developed by PRH 1400 BISCAYNE 1, LLC

The dimensions stated for this unit floor plan are approximate because there are various recognized methods for calculating the square footage of a unit. The square footage stated here is calculated from the exterior boundaries of the exterior walls to the centerline of interior demising walls without deductions for cutouts, curves, or architectural features. This method typically results in quoted dimensions greater than the dimensions that would be determined by using other accepted methods. The definition of "Unit" and the calculation method to be relied upon is set forth in the Developer's Prospectus and the method set forth in the Developer's Prospectus may result in a square footage calculation less than the method used here. The balconies depicted are conceptual and the size will vary based floor level of unit, final permitting and completed construction. The illustrations and images are conceptual and may vary from concept to actual construction. The floor plan, unit layout, locations of windows, doors, closets, plumbing fixtures, mechanical equipment, appliances, structural elements, architectural design elements, and the uses, configurations, and entries to rooms may change based on final approved plans, permitting, and completed construction. The furniture plan and the uses of space illustrated are suggested uses only and not intended to guaranty or represent any specific use of space. Furnishings, design features, fixtures, and décor illustrated are conceptual and are not included with purchase of a Unit. Consult the Developer's Prospectus for information on what is offered with the Unit and the calculation of the Unit square footage and dimensions. The Developer, PRH 1400 BISCAYNE 1, LLC, is a licensee of: The Related Group, B&B Italia, and Piero Lissoni, but none of these licensors is the Developer. © 2021 with all rights reserved PRH 1400 BISCAYNE 1, LLC

# Casa 09MOD

Floor 9

2 Bedrooms  
3 Bathrooms  
Den

AC Area  
2,053 sf / 191 m<sup>2</sup>

Outdoor Area  
172 sf / 16 m<sup>2</sup>

Total Area  
2,225 sf / 207 m<sup>2</sup>

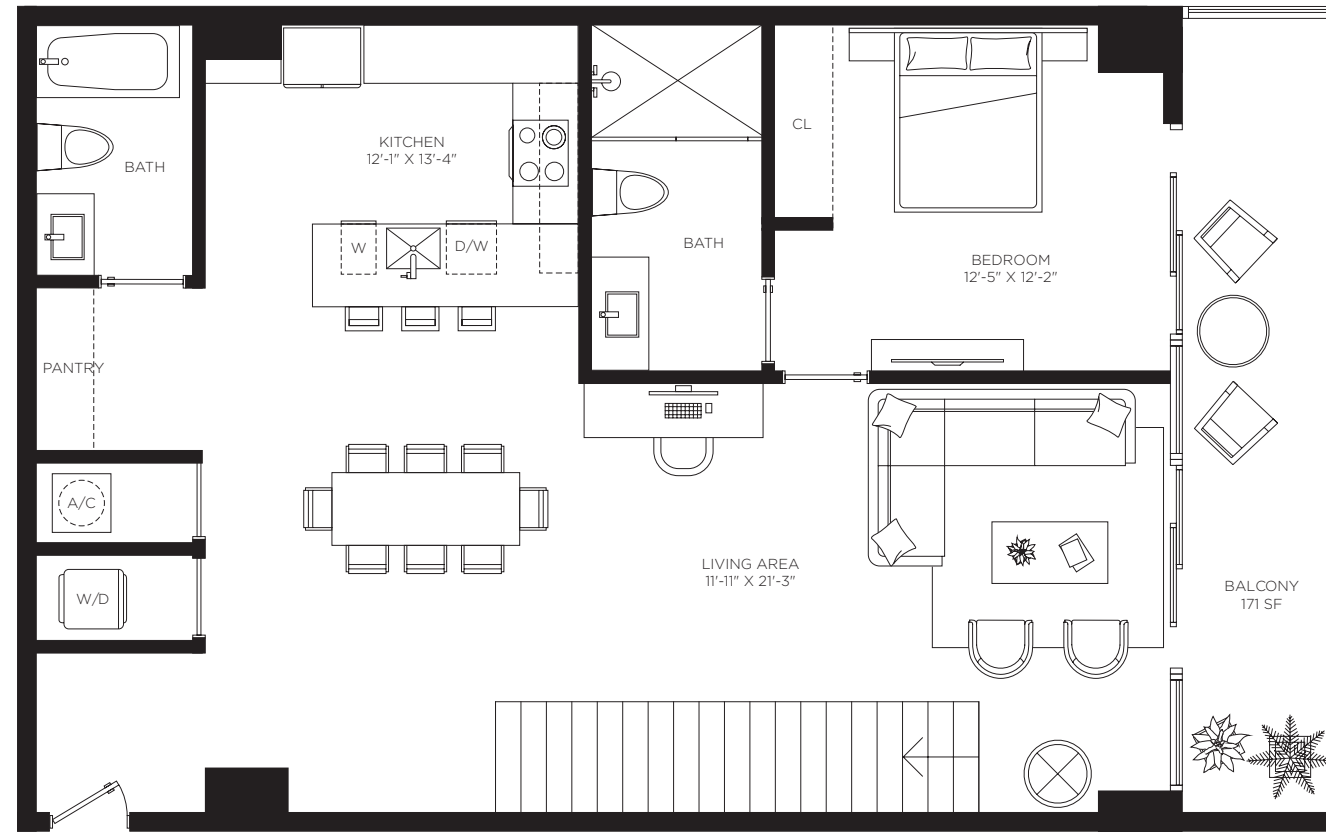
# Casa Bella

RESIDENCES

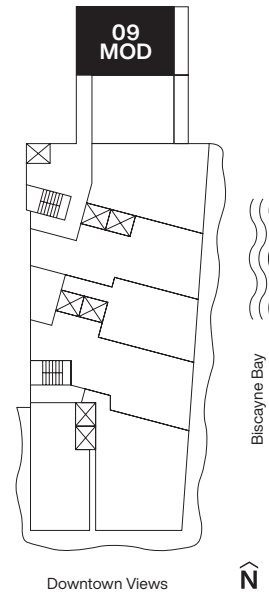
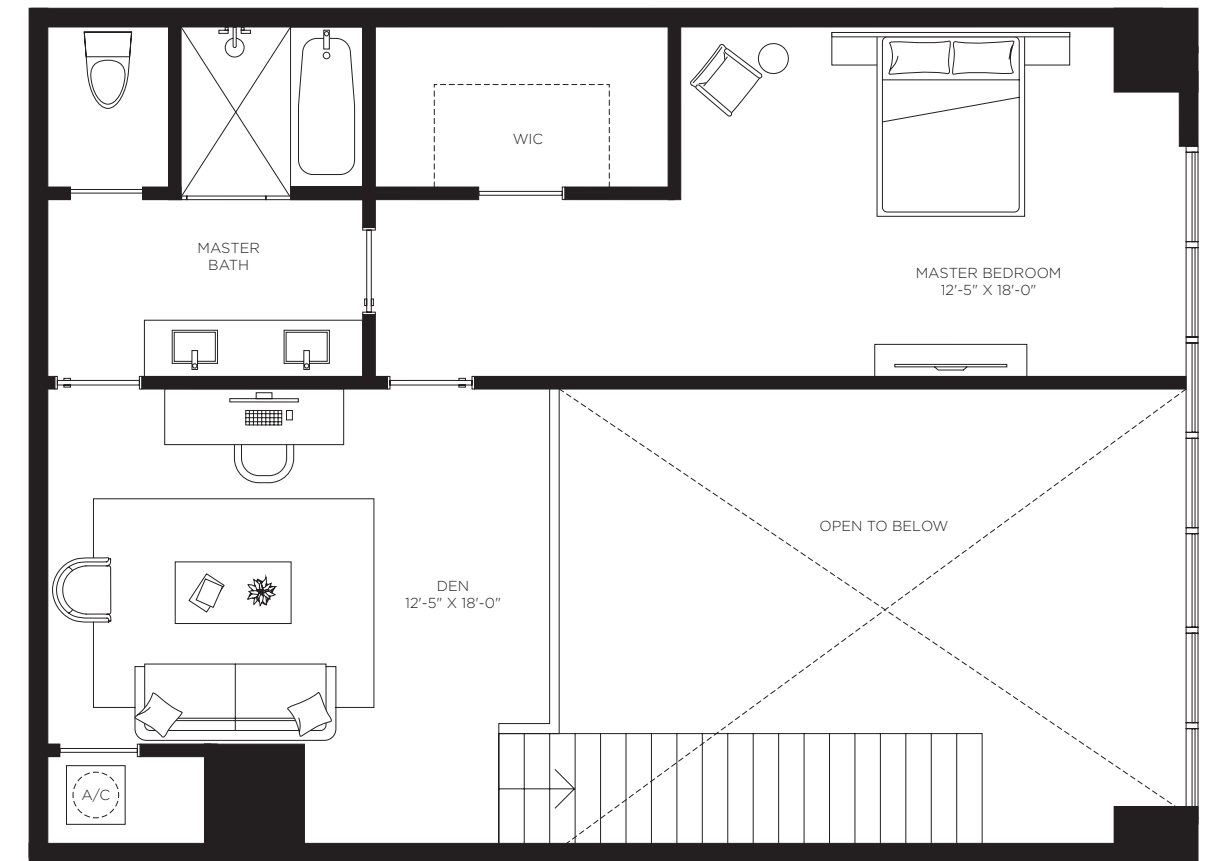
by **B&BITALIA**

The Art of Italian Living Curated by Piero Lissoni

1<sup>st</sup> Floor



2<sup>nd</sup> Floor



Seth Bloomgarden, REALTOR®, Berkshire Hathaway HomeServices EWM Realty / bloomgarden.s@ewm.com / (917) 364-7575

ORAL REPRESENTATIONS CANNOT BE RELIED UPON AS CORRECTLY STATING REPRESENTATIONS OF THE DEVELOPER. FOR CORRECT REPRESENTATIONS, MAKE REFERENCE TO THE DOCUMENTS REQUIRED BY SECTION 718.503, FLORIDA STATUTES, TO BE FURNISHED BY A DEVELOPER TO A BUYER OR LESSEE. 1400 Biscayne Condominium is developed by PRH 1400 BISCAYNE 1, LLC

The dimensions stated for this unit floor plan are approximate because there are various recognized methods for calculating the square footage of a unit. The square footage stated here is calculated from the exterior boundaries of the exterior walls to the centerline of interior demising walls without deductions for cutouts, curves, or architectural features. This method typically results in quoted dimensions greater than the dimensions that would be determined by using other accepted methods. The definition of "Unit" and the calculation method to be relied upon is set forth in the Developer's Prospectus and the method set forth in the Developer's Prospectus may result in a square footage calculation less than the method used here. The balconies depicted are conceptual and the size will vary based on floor level of unit, final permitting and completed construction. The illustrations and images are conceptual and may vary from concept to actual construction. The floor plan, unit layout, locations of windows, doors, closets, plumbing fixtures, mechanical equipment, appliances, structural elements, architectural design elements, and the uses, configurations, and entries to rooms may change based on final approved plans, permitting, and completed construction. The furniture plan and the uses of space illustrated are suggested uses only and not intended to guaranty or represent any specific use of space. Furnishings, design features, fixtures, and décor illustrated are conceptual and are not included with purchase of a Unit. Consult the Developer's Prospectus for information on what is offered with the Unit and the calculation of the Unit square footage and dimensions. The Developer, PRH 1400 BISCAYNE 1, LLC, is a licensee of: The Related Group, B&B Italia; and Piero Lissoni, but none of these licensors is the Developer. © 2021 with all rights reserved PRH 1400 BISCAYNE 1, LLC

# Cielo Uno

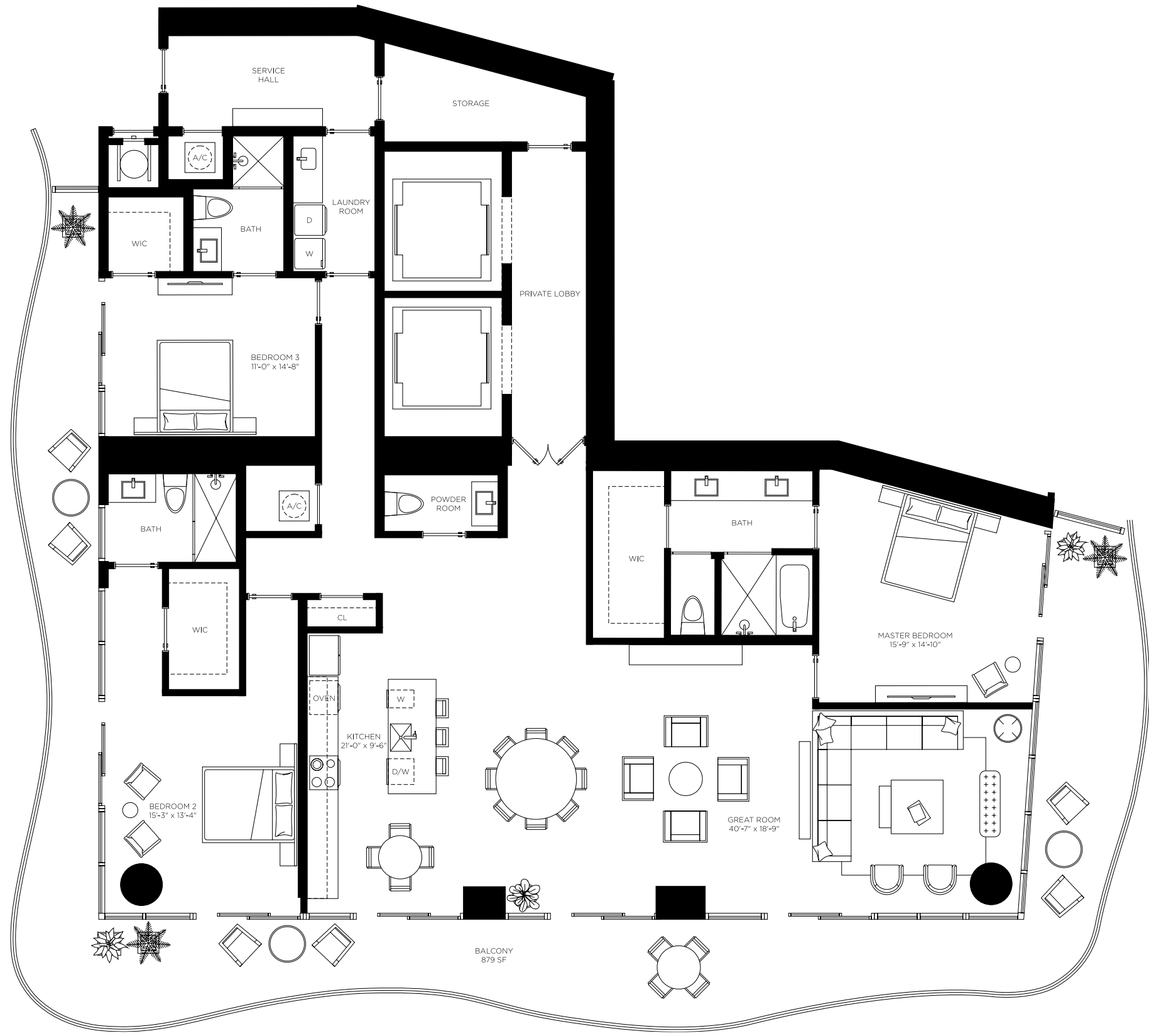
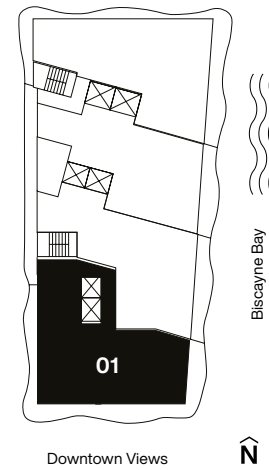
Floors 48 through 51

3 Bedrooms  
3.5 Bathrooms

AC Area  
2,920 sf / 271 m<sup>2</sup>

Outdoor Area  
879 sf / 82 m<sup>2</sup>

Total Area  
3,799 sf / 353 m<sup>2</sup>



# Casa Bella

RESIDENCES

by **B&BITALIA**

The Art of Italian Living Curated by Piero Lissoni

Seth Bloomgarden, REALTOR®, Berkshire Hathaway HomeServices EWM Realty / bloomgarden.s@ewm.com / (917) 364-7575

ORAL REPRESENTATIONS CANNOT BE RELIED UPON AS CORRECTLY STATING REPRESENTATIONS OF THE DEVELOPER. FOR CORRECT REPRESENTATIONS, MAKE REFERENCE TO THE DOCUMENTS REQUIRED BY SECTION 718.503, FLORIDA STATUTES, TO BE FURNISHED BY A DEVELOPER TO A BUYER OR LESSEE. 1400 Biscayne Condominium is developed by PRH 1400 BISCAYNE 1, LLC

The dimensions stated for this unit floor plan are approximate because there are various recognized methods for calculating the square footage of a unit. The square footage stated here is calculated from the exterior boundaries of the exterior walls to the centerline of interior demising walls without deductions for cutouts, curves, or architectural features. This method typically results in quoted dimensions greater than the dimensions that would be determined by using other accepted methods. The definition of "Unit" and the calculation method to be relied upon is set forth in the Developer's Prospectus and the method set forth in the Developer's Prospectus may result in a square footage calculation less than the method used here. The balconies depicted are conceptual and the size will vary based floor level of unit, final permitting and completed construction. The illustrations and images are conceptual and may vary from concept to actual construction. The floor plan, unit layout, locations of windows, doors, closets, plumbing fixtures, mechanical equipment, appliances, structural elements, architectural design elements, and the uses, configurations, and entries to rooms may change based on final approved plans, permitting, and completed construction. The furniture plan and the uses of space illustrated are suggested uses only and not intended to guaranty or represent any specific use of space. Furnishings, design features, fixtures, and décor illustrated are conceptual and are not included with purchase of a Unit. Consult the Developer's Prospectus for information on what is offered with the Unit and the calculation of the Unit square footage and dimensions. The Developer, PRH 1400 BISCAYNE 1, LLC, is a licensee of: The Related Group, B&B Italia; and Piero Lissoni, but none of these licensors is the Developer. © 2021 with all rights reserved PRH 1400 BISCAYNE 1, LLC